

4
Points of Entry

805
Total movements (incoming and outgoing) observed

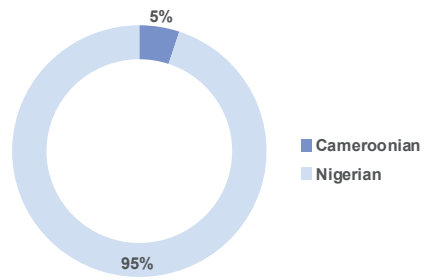
OVERVIEW

During the COVID-19 pandemic, IOM's Displacement Tracking Matrix (DTM), in collaboration with the World Health Organization (WHO), monitors the movements to and from Nigeria's Adamawa and Borno States in the North East Nigeria. Assessments are conducted at Points of Entry located along the border with Cameroon.

During the period 01 - 31 August 2021, 805 movements were observed at four Points of Entry in Borno state. Of the total movements recorded, 472 were incoming from the Far North Region in Cameroon and 4 from Ndjamena in Chad. Additionally, 329 outgoing movements were recorded from Borno State to the Far North Region in Cameroon.

A range of data is collected during the assessments to better inform on travellers' nationalities, sex, reasons for moving, mode of transportation and timeline of movement as shown in figures 1 to 4 below:

NATIONALITIES OF TRAVELLERS (FIG. 1)



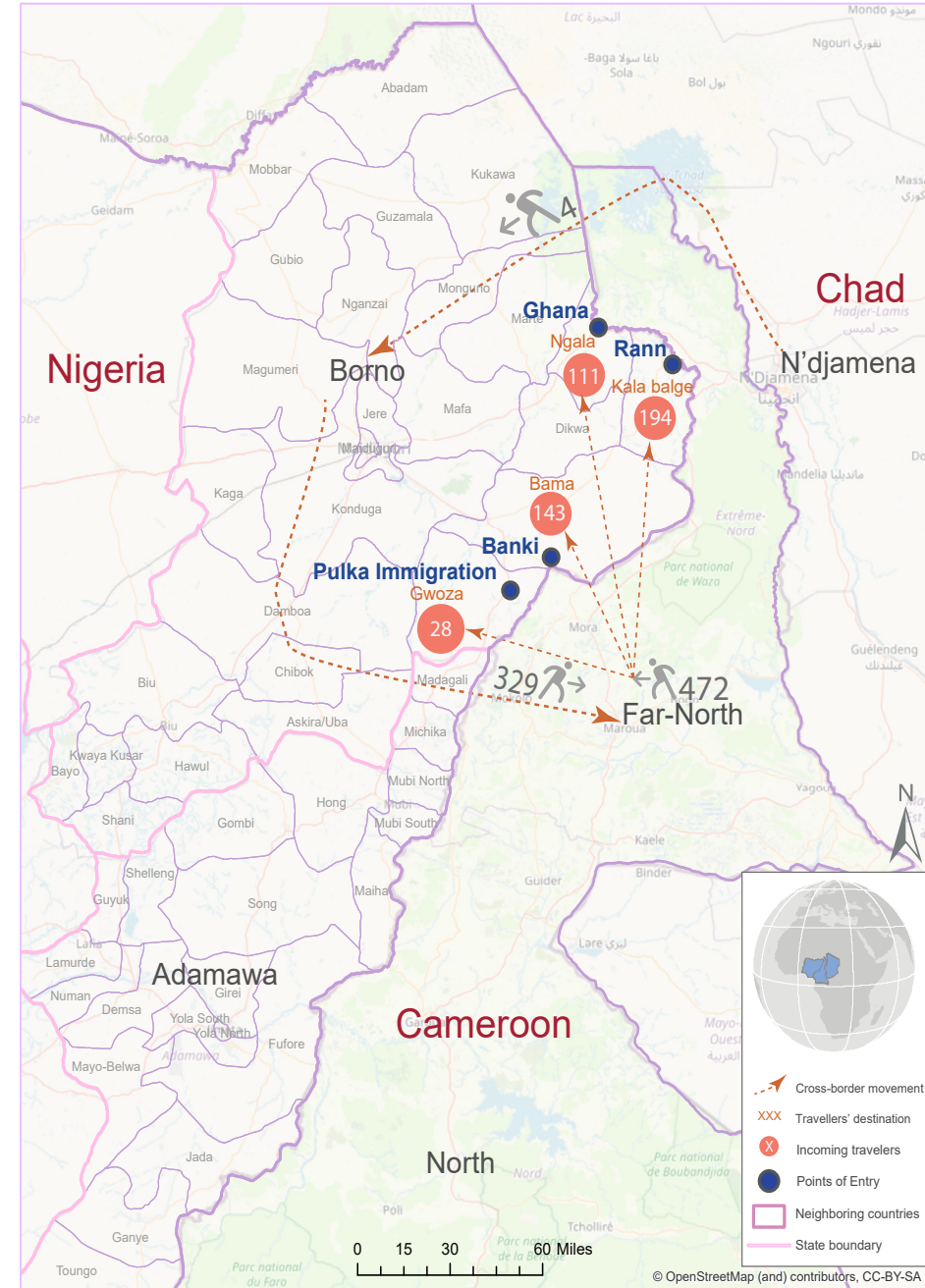
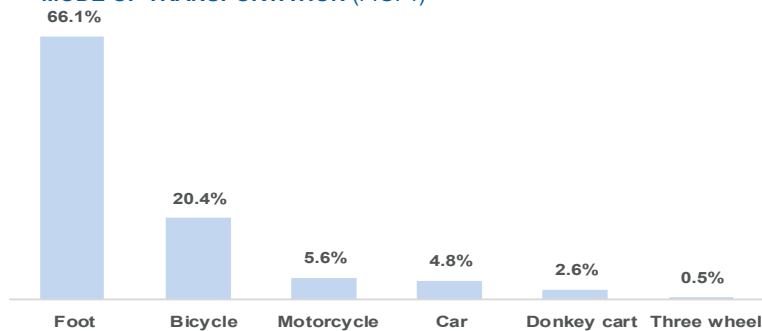
REASONS FOR MOVEMENT (FIG. 3)

Reasons for Movement	Number of Individuals	Percentage
Forced Movement Due to Conflict	4	0.5%
Health Condition	4	0.5%
Economic Migration	135	16.8%
Family Visit	157	19.5%
Short Term Local Movement	212	26.3%
seasonal	293	36.4%
Grand Total	805	100%

SEX (FIG. 2)



MODE OF TRANSPORTATION (FIG. 4)



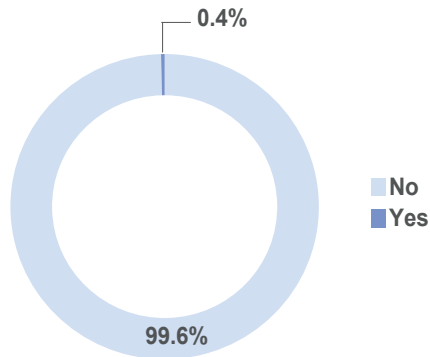
SOURCE: ESRI, IOM & OPENSTREETMAP (OSM)
The map is for illustration purposes only. The depiction and use of boundaries, geographic names and related data shown are not warranted to be error free nor do they imply judgment on the legal status of any territory, or any endorsement or acceptance of such boundaries by IOM.

PASSENGERS HEALTH SCREENING

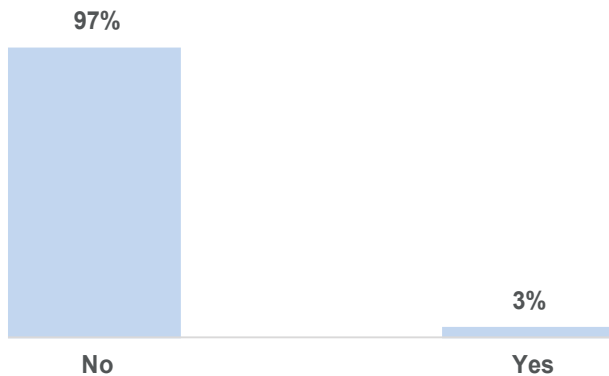
Enumerators stationed at Points of Entry conduct interviews with travellers and collect information about travellers' points of departures, intended destinations, vulnerabilities, reasons for travel and modes of transportation. Additional questions concerning the COVID-19 pandemic are asked to determine if travellers exhibit any symptoms of COVID-19; if they recently were in contact with individuals exhibiting symptoms of COVID-19 or might have died from it.

Furthermore, the assessments serve to evaluate whether travellers sought medical care or took medication in the 24 hours preceding the interviews and to verify whether they are aware of whom to call in case of emergency. The results are shown in figures 5 to 10.

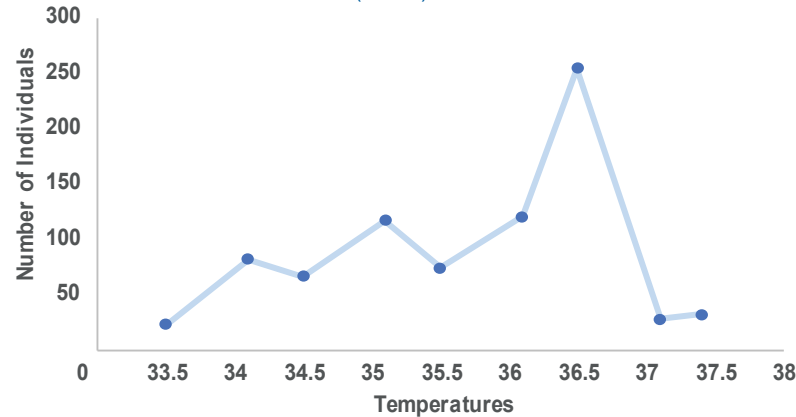
HAVE YOU SOUGHT ANY MEDICAL CARE IN ANY HEALTH FACILITY WITHIN THE LAST 14 DAYS? (FIG. 5)



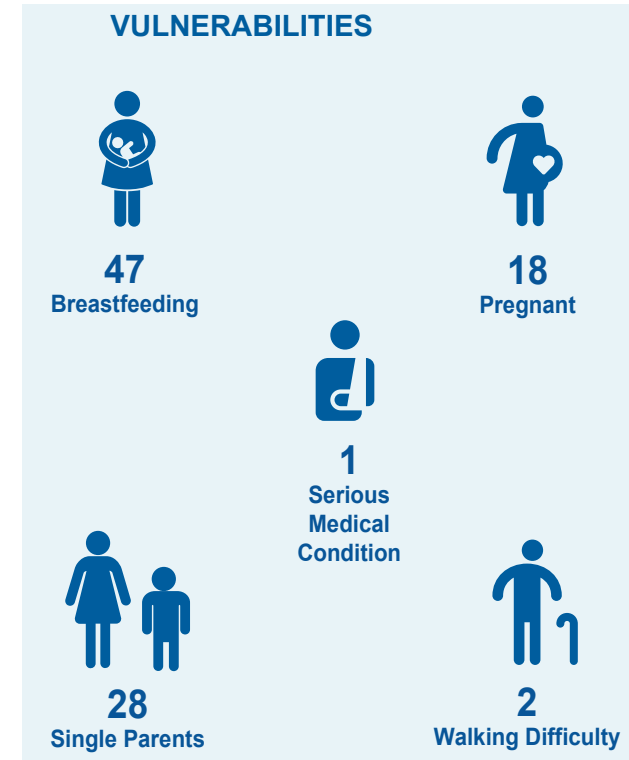
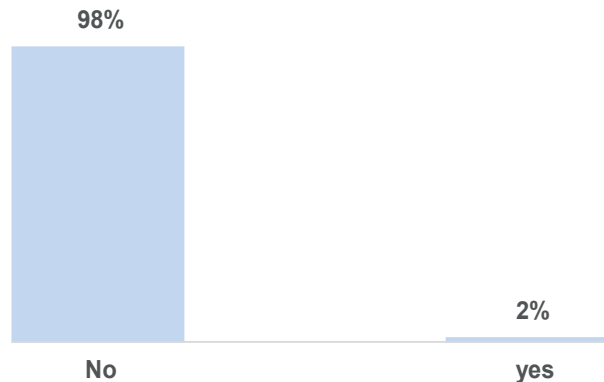
HAVE YOU HAD ANY OF THESE SYMPTOMS (FEVER, COUGH) IN THE LAST 14 DAYS? (FIG. 7)



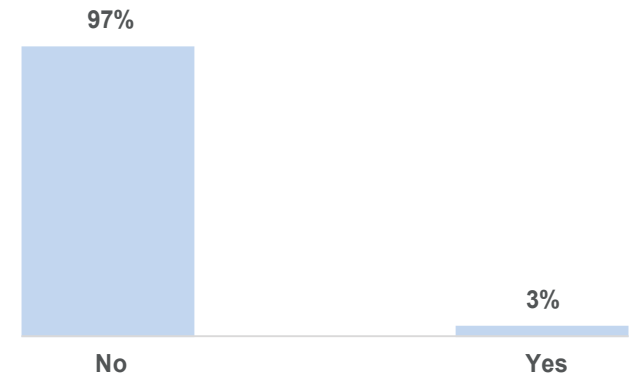
TEMPERATURES TAKEN (FIG. 6)



HAVE YOU COME IN CONTACT WITH ANYONE WHO IS SICK IN THE LAST 14 DAYS? (FIG. 8)



HAVE YOU TAKEN ANY OF THE FOLLOWING MEDICATION IN THE LAST 14 DAYS? (FIG. 9)



"When quoting, paraphrasing, or in any other way using the information mentioned in this report, the source needs to be stated appropriately as follows: "Source: Displacement Tracking Matrix (DTM) of the International Organization for Migration (IOM), SEPTEMBER 2021""

For more information or to report an alert, please contact:
DTM Nigeria: iomnigeriadtm@iom.int | +234 903 8852 524

