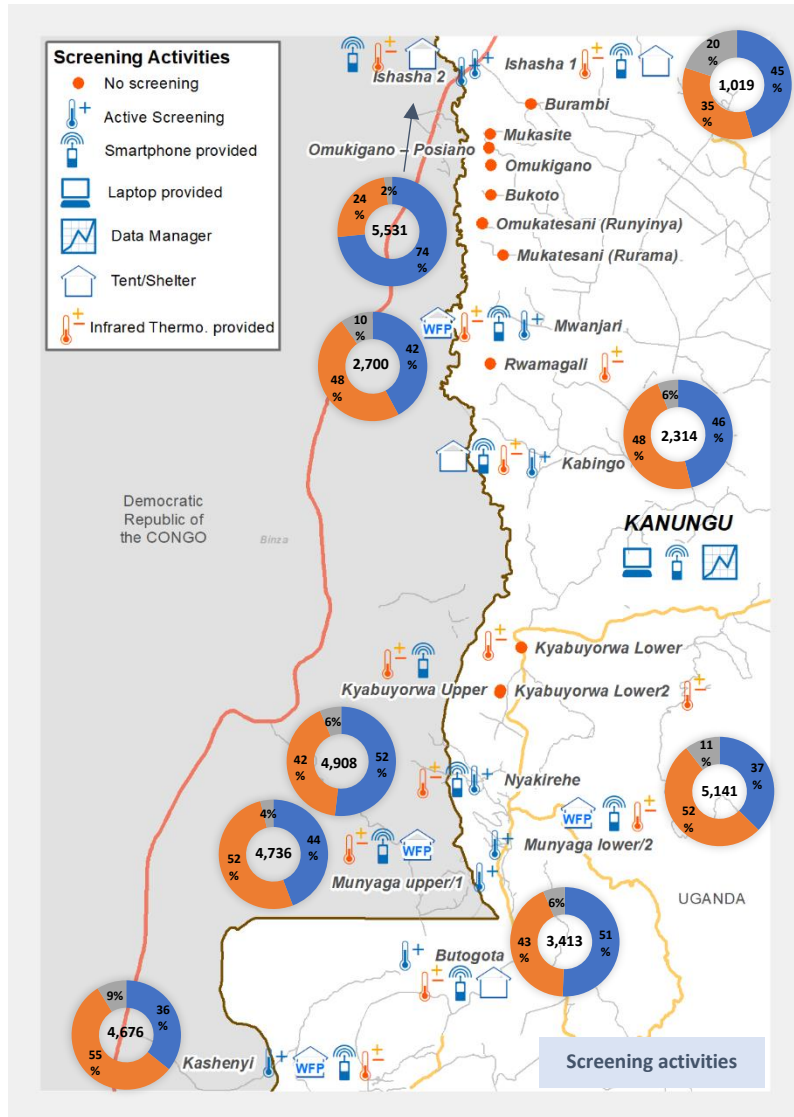
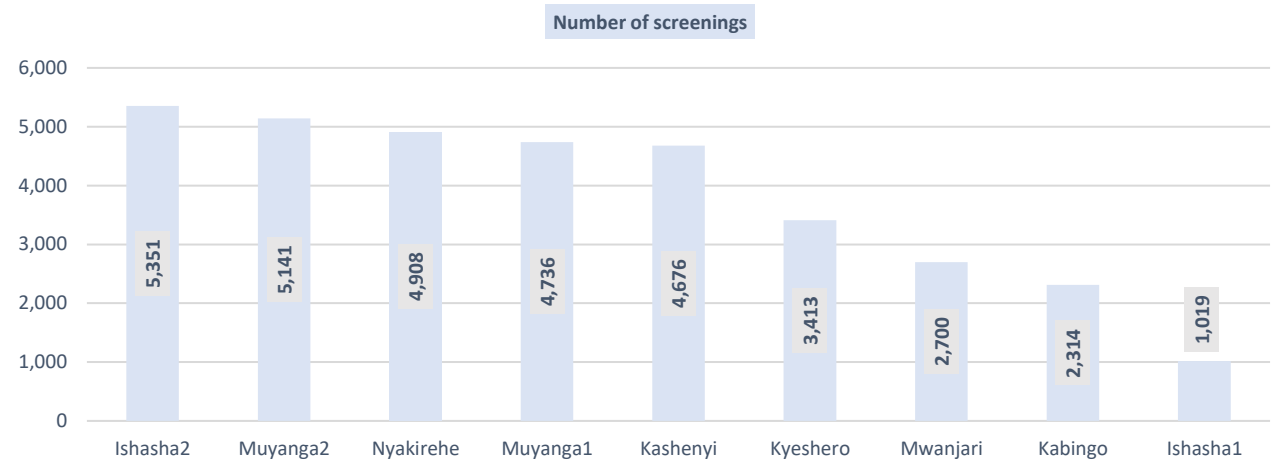


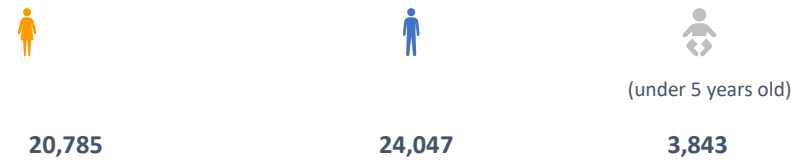


Ebola Virus Disease PoE Preparedness at Screening Points – Kanungu district

Number of (from 17 June to 30 June 2019)		
Screenings	Persons isolated	Persons referred
34,258	3	0
<hr/>		
Cumulative since 08 April 2019		
247,584	301	3



Total number of screenings, disaggregated by gender and age



Overview

Screening operation

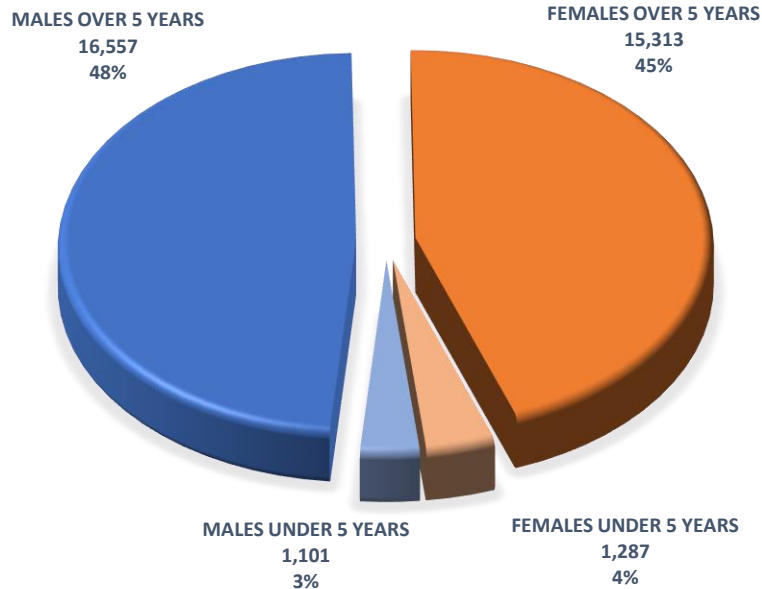
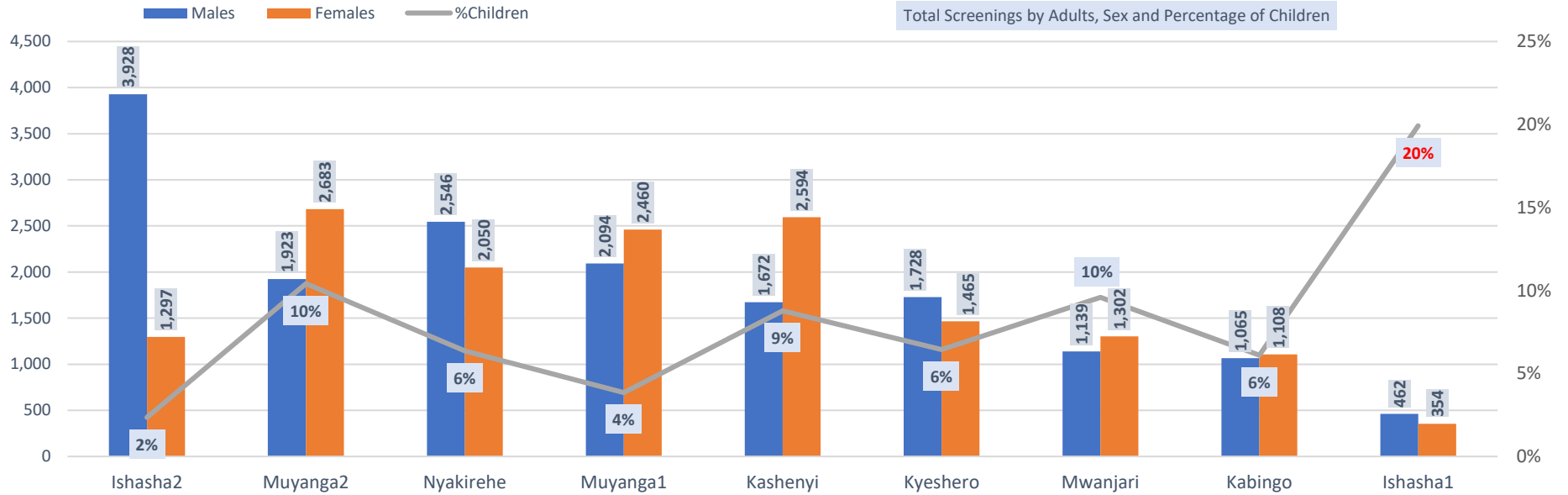
- Of the twenty (20) PoEs referenced, nine (9) have screening operations in place. Two (2) of them are official PoEs (Ishasha2 and Kyeshero/Butogota).
- A total of 34,258 screenings have been done at nine (9) PoEs at the border with the Democratic Republic of the Congo (DRC).
- Ishasha2 registered the highest number of persons screened (5,351).

Demographic

- Ratio of adult males and adult females is 48/45%.
- 7% were children under 5 years old.
- 20% of the flow in Ishasha1 was children under 5 years old.
- More adult females crossed in Kashenyi (55%), in Muyanga 1 and 2 (52%) than adult males, which is most likely linked to the nearby marketplace and trade hub.

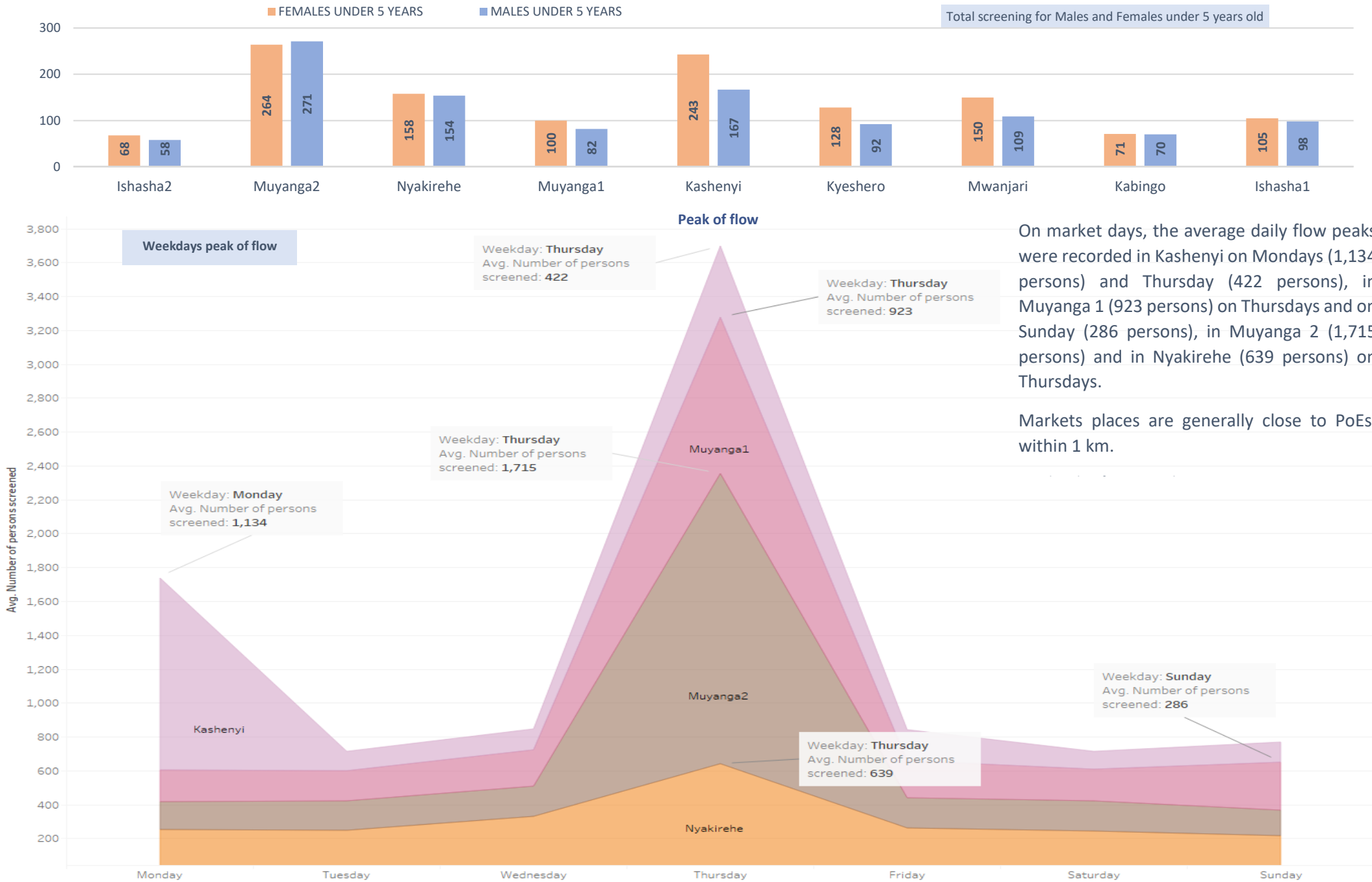


DETAILS PER POE



In Ishasha 1, the high number of children under 5 years old is explained by the number of women mainly asylum seekers entering in Uganda through this informal PoE. Border agents in DRC stop the refugees or ask them for money to cross at the official PoE Ishasha 2.

The type of flows is influenced by the land configuration (mountainous, forest...) and the type of PoE (formal or informal). The type of access road (main road or rural road) influences the type of flow as well as the reason for travelling. The presence of markets and agricultural activities is a pull factor and may attract more adult women than men.



On market days, the average daily flow peaks were recorded in Kashenyi on Mondays (1,134 persons) and Thursday (422 persons), in Muyanga 1 (923 persons) on Thursdays and on Sunday (286 persons), in Muyanga 2 (1,715 persons) and in Nyakirehe (639 persons) on Thursdays.

Markets places are generally close to PoEs, within 1 km.