

COVID-19 MOVEMENT RESTRICTIONS

LIBYA MOBILITY RESTRICTION DASHBOARD #4 (07 - 31 MAY 2020)

Reported Covid-19 Cases in Libya

Source: National Center for Disease Control (NCDC), 31 May 2020

156 Confirmed
99 Active Cases
52 Recovered
5 Deaths

COVID-19 outbreak

In Southern Libya, the first COVID-19 case was reported in Sebha on 25 May 2020. By 31 May, 67 cases had been identified and local authorities imposed a 7-day lockdown in Sebha Municipality.

Mobility Restrictions

In response to the COVID-19 pandemic, Libyan authorities initiated public health measures in March 2020 aimed at curbing the spread of COVID-19. These measures include travel and mobility restrictions due to the closure of airports, points of entry (POE) along land borders. However, on 05 May 2020, Libyan authorities started the repatriation of Libyans stranded abroad through Misrata, Benghazi Benina and Al Abraq airports, as well as Emsaed and Ras Ajdir land border crossing points.

Between 07 and 31 May 2020, close to 2,200 Libyans reportedly returned from Egypt through **Emsaed**, while almost 2,000 Libyans returned from Tunisia through **Ras Ajdir** land border crossing point.

During the reporting period, over 4,900 Libyans returned from abroad through **Misrata Airport**, **Benina Airport** in Benghazi and **Al Abraq Airport** in Al Bayda.

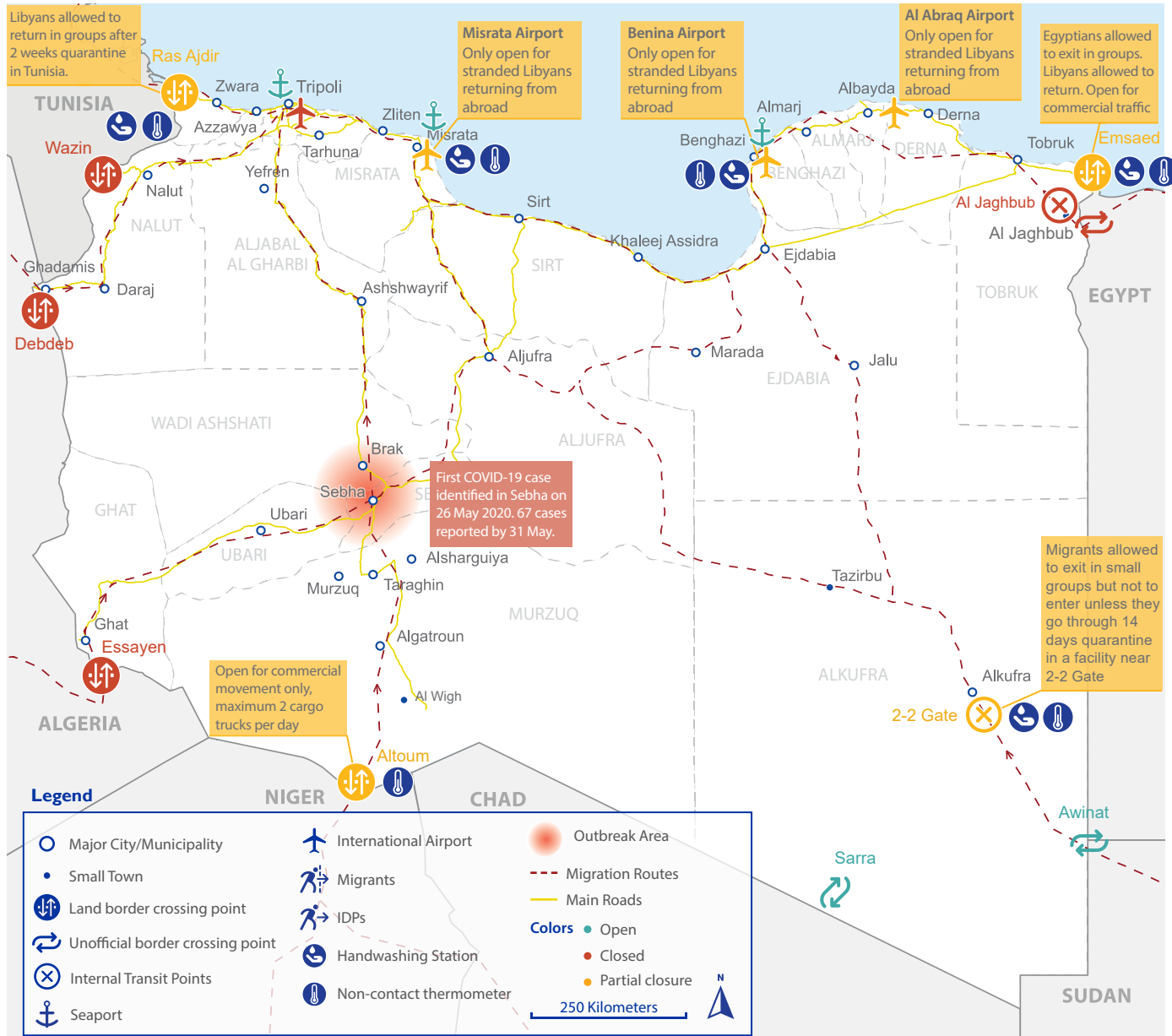
Local authorities in border cities such as Al Kufra and Al Jaghub have implemented stricter measures by implementing municipal entry restrictions into their cities.

Curfew period

Location	Curfew	Details
East	From 7PM to 7AM	Schools, markets and shops remain closed except corner food stores, bakeries, hospitals, and pharmacies.
West	From 6PM to 6AM	
South - Sebha - Ghat	From 7PM to 7AM 7 days lockdown 10 days lockdown	

373,709 IDPs in Libya

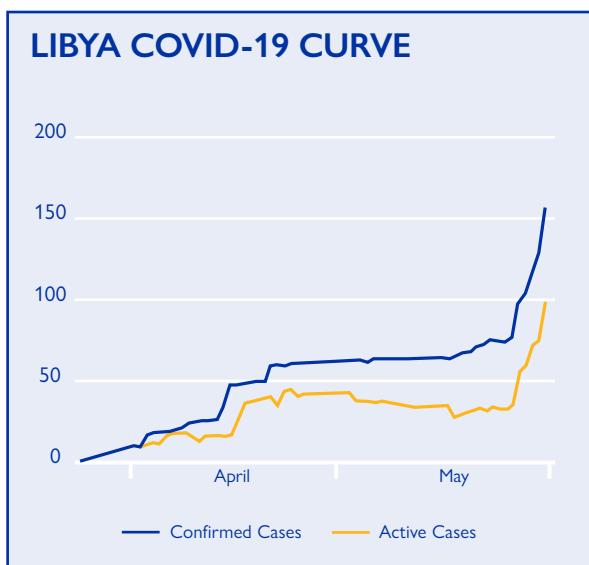
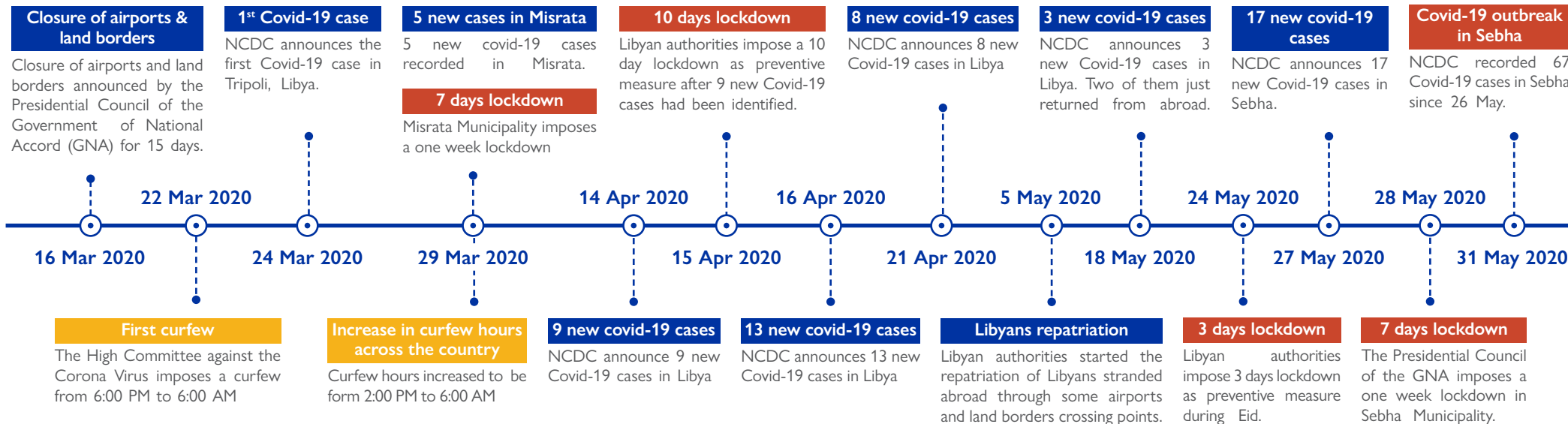
653,800 Migrants in Libya



This Map is for illustration purposes only. Name & boundaries on this map do not imply endorsement or acceptance by IOM
 Data source: IOM, ESRI, Bureau of Statistics Libya.

COVID-19 TIMELINE

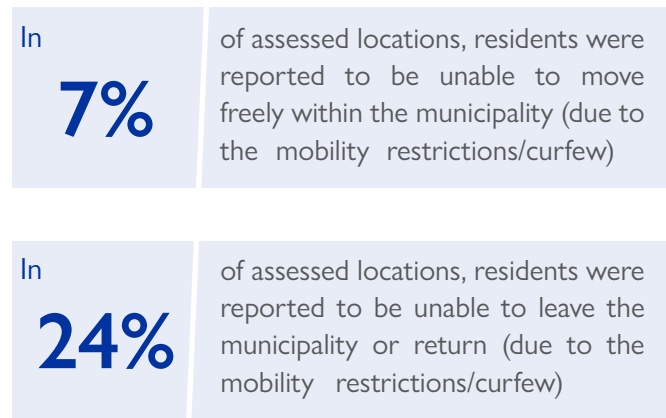
UNTIL 31 MAY 2020



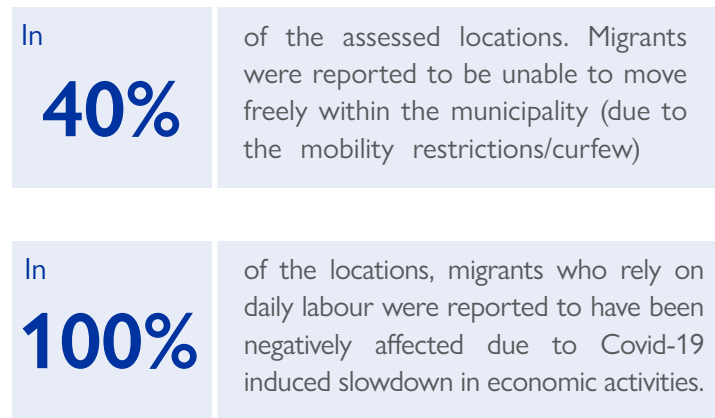
Source: NCDC, 31 May 2020

IMPACT OF MOBILITY RESTRICTIONS IN LIBYA*

IMPACT ON LOCAL RESIDENTS



IMPACT ON MIGRANTS



*Data obtained through DTM Rapid Mobility Tracking carried out in 42 municipalities across Libya between 07 and 21 May 2020 through 183 Key Informant Interviews (KIIs). Please see <http://dtm.iom.int/libya> for more details.