



EMERGENCY TRACKING TOOL (ETT)

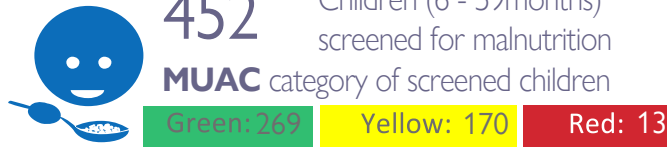
The DTM Emergency Tracking Tool (ETT) is deployed to track and to collect information on large and sudden population movements, provide frequent updates on the scale of displacement and quantify the affected population when needed. As a subcomponent of the Mobility Tracking methodology in Nigeria, ETT utilises direct observation and a broad network of key informants to capture best estimates of the affected population per location, enabling targeted humanitarian response planning.

ETT Report: No. 252 | 29 November - 05 December 2021

MOVEMENT



NEW ARRIVAL SCREENING BY NUTRITION PARTNERS

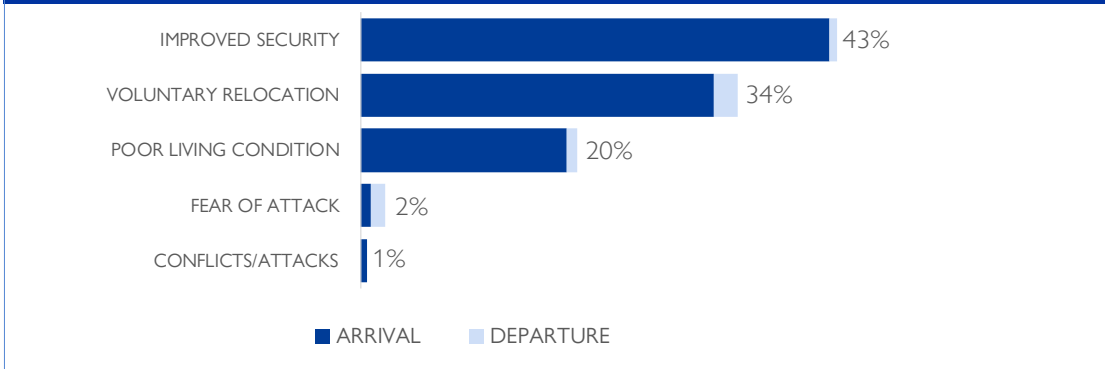


Between 29 November and 05 December 2021, a total of 9,263 movements were recorded in the states of Adamawa and Borno. The recorded movements consisted of 8,789 arrivals and 474 departures. Arrivals were recorded at locations in Askira/Uba, Bama, Biu, Gwoza, Kala/Balge, Hawul, Monguno and Ngala Local Government Areas (LGAs) of the most conflict-affected state of Borno and in Girei, Gombi, Hong, Lamurde, Maiha, Michika, Mubi South, Song, Yola North and Yola South LGAs of Adamawa.

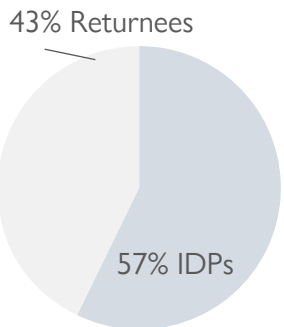
Departures were recorded in Askira/Uba and Kala/Balge LGAs of Borno, and Fufore, Gombi, Hong, Lamurde, Maiha, Michika, Numan, Song and Yola North and Yola South LGAs of Adamawa.

ETT assessments identified the following movement triggers: improved security (4,006 individuals or 43%), voluntary relocation (3,172 individuals or 34%), poor living conditions (1,825 individuals or 20%), fear of attacks (204 individuals or 2%) and conflicts/attacks (56 individuals or 1%).

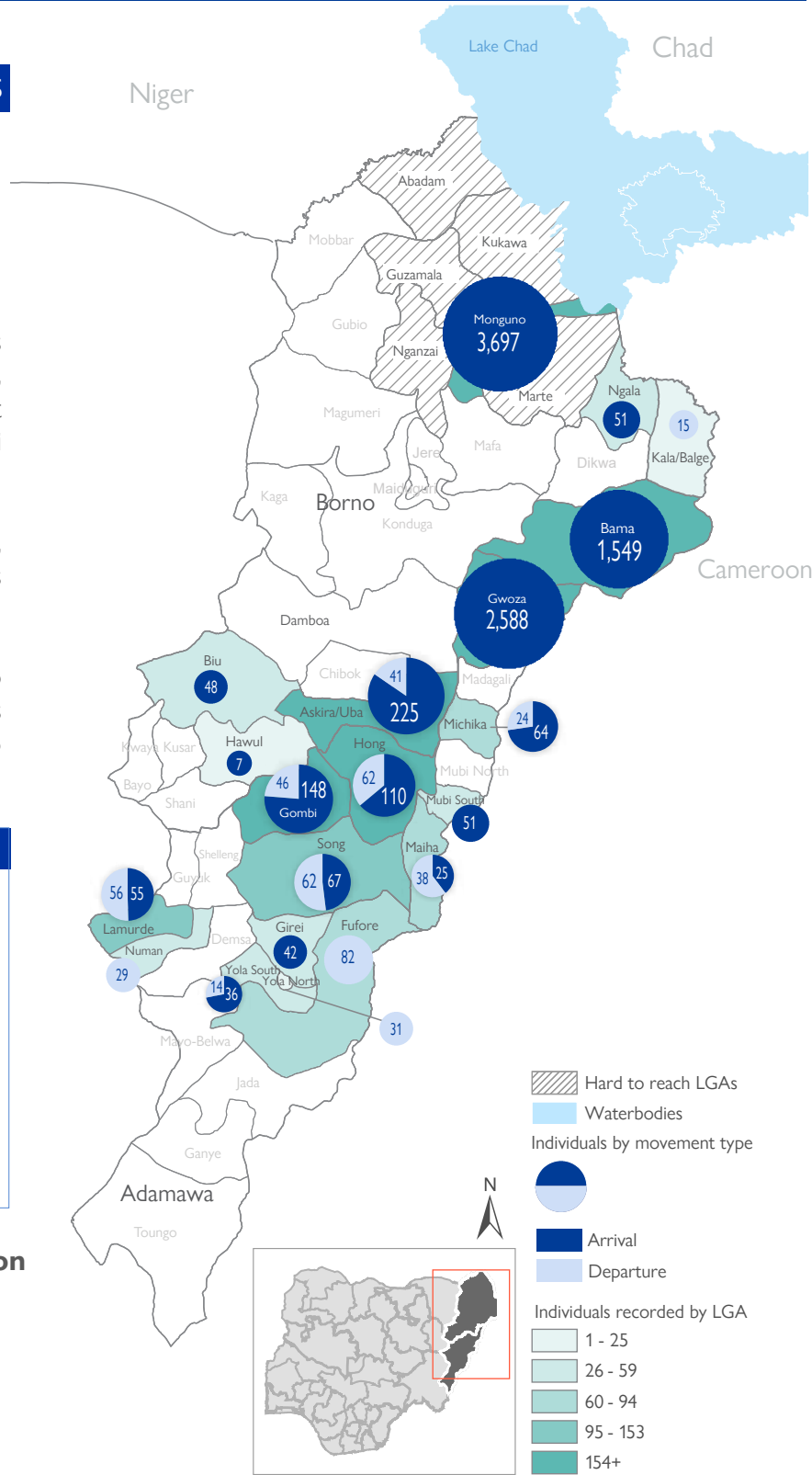
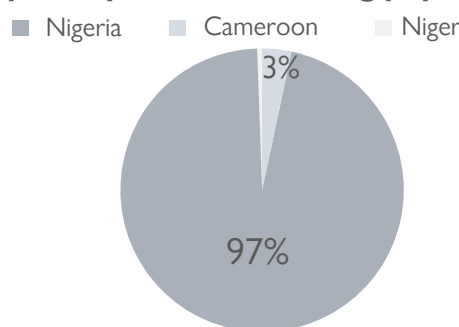
PERCENTAGE OF INDIVIDUALS BY MOVEMENT TRIGGER



Affected population



Country of departure of arriving population



* Movements in Kala/Balge were captured by ETT outreach staff in the LGA

SUMMARY OF MAJOR MOVEMENTS

Monguno: 3,697 arrivals were recorded in Monguno LGA of Borno State. The arrivals included 3,646 individuals from Maiduguri Metropolitan Council LGA, 37 individuals from Diffa region in Niger, 13 individuals from Jere LGA in Borno State and 1 individual from Kukawa LGA in Borno State. Ninety-nine per cent of the movements recorded were a result of the improved security situation in areas of origin and 1 per cent of the movements were due to poor living conditions.

Gwoza: 2,588 arrivals were recorded in Gwoza LGA of Borno State. The arrivals included 2,319 individuals from Maiduguri Metropolitan Council LGA, 218 individuals from within Gwoza LGA, 44 individuals from Bama LGA and 7 individuals from Marwa region in Cameroon. Ninety per cent of the movements recorded were due to voluntary relocation and 10 per cent of the movements were due to poor living conditions.

Bama: 1,549 arrivals were recorded in Bama LGA of Borno State. The arrivals included 1,277 individuals from within Bama LGA and 272 individuals from Marwa region in Cameroon. All departures were to other locations within Bama LGA. Eighty-two per cent of the movements recorded were due to poor living conditions and 18 per cent of the movements were due to voluntary relocation.

Askira/Uba: 210 arrivals were recorded in Askira/Uba LGA of Borno State. The arrivals included 210 individuals from within Askira/Uba LGA and 15 individuals from Maiha LGA in Adamawa State. The departures included 30 individuals to Gwoza LGA in Borno State and 11 individuals to Damboa LGA in Borno State. Seventy-nine per cent of the movements recorded were a result of the improved security situation in areas of origin and 15 per cent of the movements were due to poor living conditions, and 6 per cent of the movements were due to voluntary relocation.

NEW ARRIVAL MALNUTRITION SCREENING SUMMARY (CHILDREN 6 - 59 MONTHS)

An exhaustive nutrition screening using mid-upper arm circumference (MUAC) and oedema for acute malnutrition was conducted by sector partners for 452 children of 6-59 months. Of the 452 children screened, the MUAC reading indicated that 13 children were recorded in the red category, 170 children in the yellow category and 269 children in the green category. No case of oedema was reported in the 4 LGAs assessed.

The results also included 34 children who arrived from neighbouring countries (21 in Bama, 5 in Gwoza LGA and 8 in Monguno LGA). Of all the 34 children measured, none was recorded in the red category, 1 in the yellow category, and 33 were in the green category. All children found with acute malnutrition have been admitted for treatment. Please note, the data presented are not surveillance results and should be interpreted with caution.

LGA	MUAC Categories						Total
	Green (>12.5cm)		Yellow (11.5cm - 12.5cm)		Red (<11.5cm)		
	Inaccessible	Accessible	Inaccessible	Accessible	Inaccessible	Accessible	
Bama	175	45	40	0	5	1	266
Gwoza	26	10	0	0	4	1	41
Monguno	0	7	0	130	0	2	139
Ngala	6	0	0	0	0	0	6
Total	207	62	40	130	9	4	452

■ Nourished
 ■ Moderate Acute Malnutrition (MAM)
 ■ Severe Acute Malnutrition (MAM)

Please note, the data presented are not surveillance results and should be interpreted with caution.

Table 1. Details of movements by locations of assessment and locations of arrival / departure - only movements with at least 22 persons are listed below

Tracking location			Movement location			ARRIVAL	DEPARTURE	GRAND TOTAL
STATE	LGA	WARD	STATE	LGA	WARD			
ADAMAWA	FUFORE	PARIYA	ADAMAWA	GIREI	GIREI I	-	42	42
	GOMBI	GOMBI NORTH	ADAMAWA	SONG	SONG WAJE	55	-	55
			BORNO	BAMA	BUDUWA/BULA CHIRABE	50	-	50
		TAWA	ADAMAWA	HONG	HILDI	-	31	31
	HONG	GABUN	ADAMAWA	MICHIKA	MODA/DLAKA/GHENJUWA	24	-	24
			ADAMAWA	HONG	GARAHA	32	-	32
			HONG		28	-	28	
			UBA		26	-	26	
	GAYA	ADAMAWA	DAKSIRI	-	62	62		
	HONG	SHANGULI	ADAMAWA	HONG	GAYA	24	-	24
	MICHIKA	MADZI	BORNO	ASKIRA UBA	HUSARA/TAMPUL	21	-	21
		MODA/DLAKA/GHENJUWA	ADAMAWA	GOMBI	GABUN	-	24	24
	SONG	SONG GARI	ADAMAWA	SONG	SONG WAJE	32	-	32
		SONG WAJE	ADAMAWA	GOMBI	GOMBI NORTH	-	55	55
	LAMURDE	LAFIYA	ADAMAWA	LAMURDE	WADUKU	-	56	56
			ADAMAWA	GUYUK	DUMNA	27	-	27
MUBI SOUTH	GUDE	BORNO	BAMA	BUDUWA/BULA CHIRABE	22	-	22	
GIREI	GIREI I	ADAMAWA	FUFORE	PARIYA	42	-	42	
BORNO	ASKIRA/UBA	ASKIRA EAST	BORNO	ASKIRA UBA	UBA	95	-	95
		HAUSARI/ZADAWA		GIWI/WAMDEO	41	-	41	
		UBA		GWOZA	HAMBAGDA/LIMANKARA	-	30	30
		NGOHI		ASKIRA UBA	NGULDE	74	-	74
	GWOZA	GWOZA WAKANE/BULABULIN	BORNO	GWOZA	HAMBAGDA/LIMANKARA	44	-	44
				MAIDUGURI	MAISANDARI	2,319	-	2,319
				BAMA	SABSABWA/SOYE/BULONGU	30	-	30
				GWOZA	DURE/WALA/WARABE	164	-	164
	BAMA	SHEHURI/HAUSARI/MAIRI	BORNO	BAMA	MBULIYA/GONIRI/SIRAJA	662	-	662
					DIPCHARI/JERE/DARAJAMAL/KOTEMBE	309	-	309
					LAWANTI/MALAM/MASTARI/ABBARAM	306	-	306
				CAMEROON	MARWA	MORA	44	-
	BUDUWA/BULA CHIRABE	CAMEROON	MARWA	MORA	228	-	228	
					228	-	228	
	MONGUNO	MONGUNO	BORNO	MAIDUGURI	MAISANDARI	3,646	-	3,646
	BIU	DUGJA	NIGER	DIFFA	DIFFA	37	-	37
BIU	DUGJA	BORNO	BIU	MANDARA GIRAU	48	-	48	
NGALA	NGALA WARD	BORNO	NGALA	WARSEHE	38	-	38	

The depiction and use of boundaries, geographic names, and related data shown on maps and included in this report are not warranted to be error free nor do they imply judgment on the legal status of any territory, or any endorsement or acceptance of such boundaries by IOM.

When quoting, paraphrasing or in anyway using the information mentioned in this report, the source needs to be stated appropriately as follows: "Source: International Organization for Migration [month, year], Displacement Tracking Matrix (DTM)".

* MUAC data is provided by UNICEF

For more information or to report an alert, please contact: DTM Nigeria: iomnigeriadtm@iom.int

<https://displacement.iom.int/nigeria> ; <https://dtm.iom.int/nigeria>



Humanitarian Aid
And Civil Protection