



On 24 January 2022, Tropical Storm Ana made landfall in Angoche district, Nampula. The storm has significantly affected the provinces of Nampula, Zambezia and Tete. Further reports of damages have been recorded in Sofala, Niassa and Cabo Delgado provinces. Situational overviews recorded by the National Institute for Disaster Management and Risk Reduction (INGD) report at least 45,395 individuals affected, 99 people injured, 18 people killed as well infrastructure damages to 132 electricity lines, 346 classrooms and 12 health centers ([OCHA, 27 January](#))

Through an existing network of enumerators on ground, IOM, in close coordination with INGD, has been providing logistical and technical support in rapid assessments within the first 72 hours of Tropical Storm Ana landfall.

Within these assessments, a total of one Accommodation centres were assessed in order to provide a preliminary snapshot of displaced populations in EPC Mutacaze in Mogovolas district, hosting 68 individuals (comprising of 39 children, 17 adult females and 12 adult males).

Detailed, joint multi-sectoral needs assessments, led by INGD and in collaboration with humanitarian partners, are currently ongoing. IOM's Displacement Tracking Matrix (DTM) teams continue to support in rapid assessments in Tete, Niassa, Sofala, Nampula and Zambezia – flagging locations, primary needs and impacts across communities yet to be evaluated through in-depth multi-sectoral assessments

RAPID ASSESSMENT

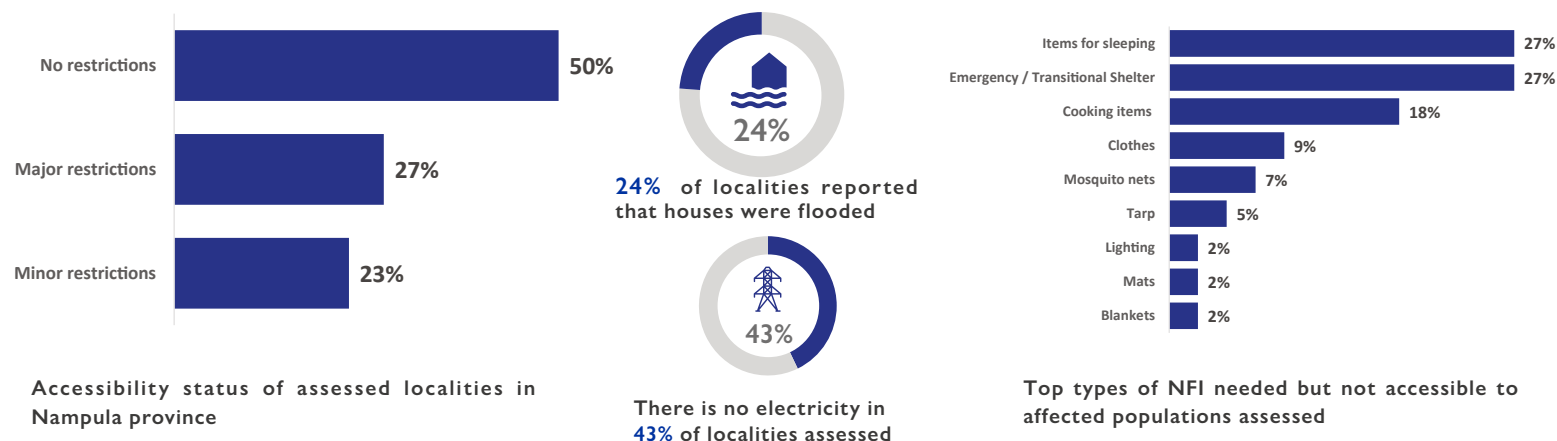
Following these events, rapid assessments were conducted by the International Organization for Migration (IOM) in collaboration with the National Institute for Disaster Management and Risk Reduction (INGD), from the 25 January 2022. Rapid assessments are still ongoing with a focus on understanding the extent of damages to houses and facilities across all affected localities in Nampula Province.

As a result of the impact of Tropical Depression Ana, an estimate of 3,709 families had their houses completely/partially destroyed in the districts assessed so far. Of these, 1,368 are located in the district of Angoche, 25 in Nampula, 470 in Larde, 137 in Memba, 275 in Mongincual, 9 in Mogovolas, 1,357 in Moma and 68 in Nacala

In total, 3,680 permanent houses, 21 tents and 8 emergency shelters were completely or partially destroyed due to the rain and strong winds. Additionally, IOM/INGD identified six latrines and two water points damaged.

Moreover, 18 schools in the localities assessed were partially damaged. The affected schools are located in Angoche (9), Larde (8), Mogovolas (1) districts, a total of 100 classrooms were completely or partially damaged in the affected schools.

Eight health centers were also completely/partially damaged, in the districts of Moma (4), Angoche (1), Nampula city (1), Larde (1) and Memba (1).



LOCALITIES AFFECTED IN NAMPULA PROVINCE

BY TROPICAL STORM ANA

The table below summarizes the extent of damages to shelters and facilities across all localities assessed so far in Nampula Province. Please note that the total figure provided is a sum of affected structures (both partially and totally destroyed). For more information, and to have access to the complete data set, please contact the IOM/DTM team (DTMMozambique@iom.int).

Province	District	Post	Locality	Is the locality accessible?	No. of Permanent houses completely destroyed?	No. of Permanent houses partially destroyed?	How many health center completely destroyed?	How many health center were partially damaged?	How many schools were partially damaged?	How many classrooms completely destroyed?	How many classrooms were partially damaged?	No. of damaged latrines (in unit)	How many water points were damaged or not working?	
Nampula	Angoche	Angoche	Angoche-Sede	No restricted access	19	-	-	-	-	-	-	-	-	
		Aube	Aube-Sede	No restricted access	58	24	-	1	3	-	-	-	-	
		Boila	Nametoria	N/a	505	528	-	-	5	-	-	-	-	
	Nampula	Namaponda	Namaponda-Sede	No restricted access	111	123	-	-	1	-	3	-	-	
		Nampula	Napipine	No restricted access	7	7	-	-	-	-	-	2	2	
	Larde	Larde	Larde-Sede	Major restrictions	127	181	-	-	4	-	-	-	-	
			Topuito	No restricted access	80	82	-	1	4	-	-	-	-	
	Memba	Memba	Geba	No restricted access	29	73	-	1	-	-	-	-	-	
			Memba	Major restrictions	12	5	-	-	-	-	4	-	-	
	Mogincual	Namige	Namiepe	No restricted access	20	-	-	-	-	-	-	-	-	-
			Namige sede	Major restrictions	-	228	-	-	-	-	-	-	-	-
		Quixaxe	Mepeone	No restricted access	12	-	1	-	-	-	-	-	-	-
			Quixaxe	No restricted access	-	15	-	-	-	-	-	-	-	-
	Mogovolas	Nametil	Nametil	No restricted access	1	8	-	-	1	-	-	-	-	
	Moma	Moma	Moma	No restricted access	508	849	-	4	-	41	56	-	-	
	Nacala	Nacala	Mutiva	Major restrictions	57	11	-	-	-	-	-	-	-	
	GRAND TOTAL					1,546	2,134	1	7	18	41	59	6	2

