



DTM
IOM DISPLACEMENT
TRACKING MATRIX
SOUTH SUDAN



IDP and Returnee ATLAS as of September 2021

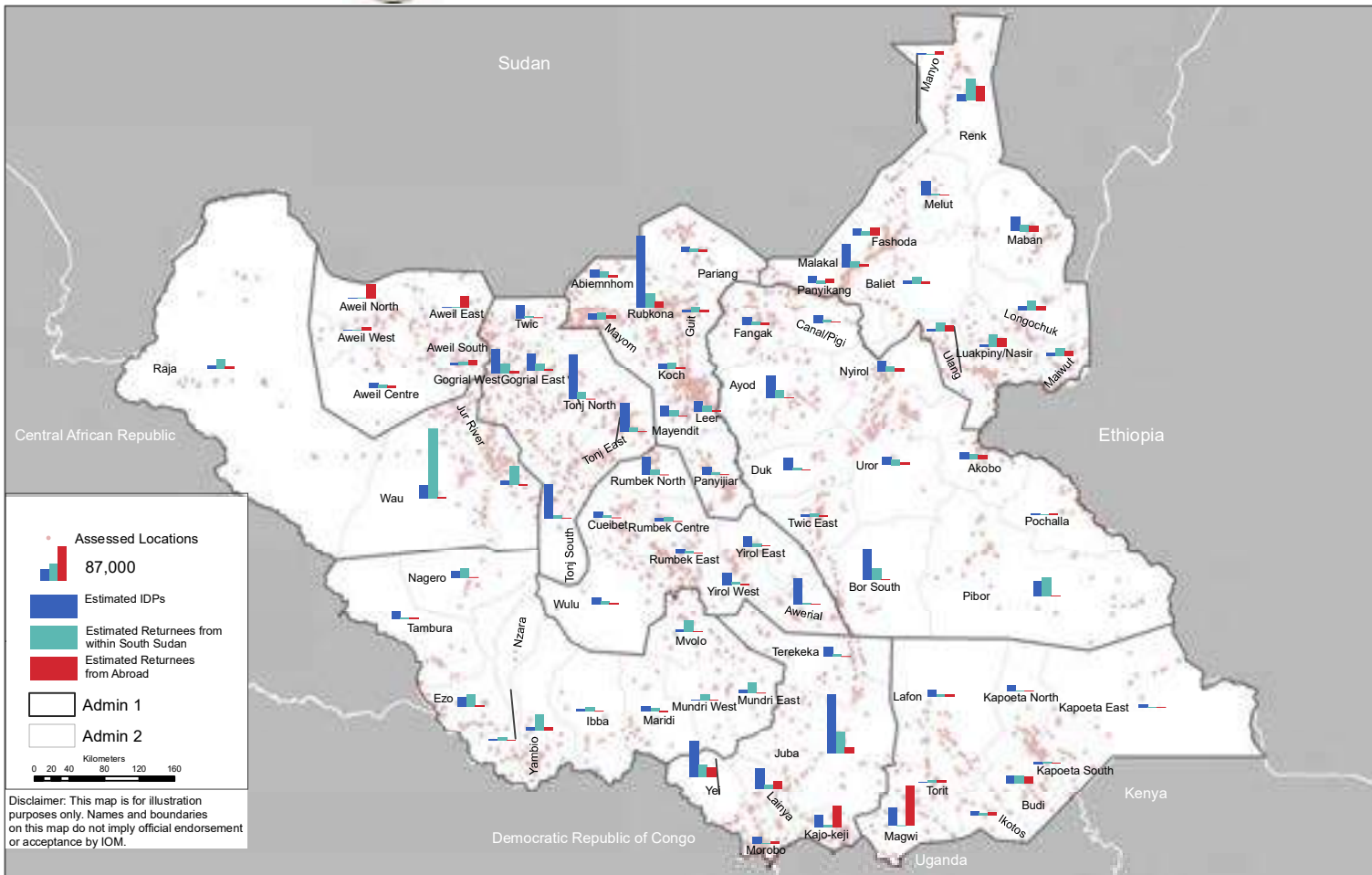
Mobility Tracking Round 11, South Sudan

Data collection: July - September 2021

Published: June 2022

Photo: Ayod, June 2021

© IOM / Leju Francis



Mobility Tracking supports the humanitarian response in South Sudan by providing a unified and comprehensive system to collect and disseminate data on the numbers, mobility history and needs of IDPs and returnees on a nationwide scale. Data collection takes place at a granular level and is repeated at regular intervals to ensure accurate and up-to-date information.

IOM DTM mapped a total of 2,017,236 IDPs (including 7% previously displaced abroad) and 1,782,803 returnees (including 34% from abroad) in 3,335 locations across South Sudan as of September 2021.

Data collection for round eleven took place from July to September 2021 following round eleven which took place in November and December 2020. DTM assessed 152 displacement sites and 3,183 villages/neighborhoods. Assessed locations were spread across 508 sub-areas (locally known as payams) at the third administrative level in every county (78) of all 10 states.

PERIOD: July-September 2021 **COVERAGE:** 3,335 locations 508 admin 3 (payam) in all 78 counties



Current IDPs
 (Displaced between 2014
 and September 2021):
2,017,236



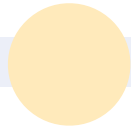
Current Returnees
 (Returned between 2016
 and September 2021):
1,782,803



355,666 IDPs remain displaced since 2014 -2015, 98% due conflict.

- **15 December 2013:** Violence erupted in Juba. The fighting was particularly intense in Central Equatoria, Jonglei, Unity, Upper Nile and Lakes states.
- **23 January 2014:** An agreement to cease hostilities was signed by both parties.
- **Late January 2014:** Fighting in Unity State led to the forced displacement of thousands of civilians.
- **August 2015:** The two warring parties reached Agreement on the Resolution of Conflict in South Sudan (ARCSS) facilitated by Intergovernmental Authority on Development (IGAD).
- Despite the 2015 ARCSS, violence continued in many parts of the country spreading to previously peaceful areas, e.g., Wau and the Equatorias.

2014-2015



155,597 IDPs remain displaced since 2018 (pre R-ARCSS). The main reason for displacement are conflict (47%) and communal clashes (45%).

230,187 individuals had returned during this period as of September 2021, of which 28% were previously abroad.

- **June 2018:** Khartoum Declaration of Agreement between parties of the Conflict of South Sudan.
- **August 2018:** signing of a cease-fire and power-sharing agreement.

2018-Pre R-ARCSS



2016-2017

281,674 IDPs remain displaced during this period as of September 2021, by conflict (85%) and communal clashes (11%).

155,889 individuals had returned during this period as of September 2021, of which 28% were previously abroad.

- **July 2016:** violence broke out between government forces and opposition factions.
- **2017 and 2018:** a series of cease-fires were negotiated and subsequently violated.
- During this period the increased number of IDPs in the Equatoria Region is attributed to a face-off between the center's forces and rebels, as well as the ceasefire violations reported in Jonglei.



2018-Post R-ARCSS

135,965 IDPs remain displaced since 2018 (post R-ARCSS). The main reason for displacement are communal clashes (43%) and conflict (43%).

286,915 individuals had returned during this period as of September 2021, of which 31% were previously abroad.

September 2018, Signing of the Revitalized Agreement on The Resolution Of The Conflict In South Sudan, officially ending the civil war (IGAD).

2019



155,890 IDPs remain displaced since 2019. The main reason for displacement are communal clashes (38%), conflict (36%) and natural disasters (22%).

331,127 individuals had returned as of September 2021, of which 35% were previously abroad.

- **May 2019:** The pre-transition period was extended for six months after implementation delays.
- **Since June** severe floods displaced population in Northern Bahr el Ghazal, Warrap, Lakes, Jonglei, Upper Nile, Unity, Eastern Equatoria and Central Equatoria (DTM, OCHA).



2020

317,774 IDPs were displaced in 2020 which is attributed to natural disasters (mainly floods) (51%), communal clashes (36%) and conflict (10%).

311,271 individuals had returned during this period, of which 36% were previously abroad.

- **February 2020:** The Transitional Government of National Unity was formed.
- **September 2020:** UNMISS started retiring its troops and police from Protection of Civilians sites from Bor and Wau.
- **Since June 2020** people were displaced by flooding from locations in Jonglei, Central Equatoria, Warrap, Unity and from Northern Bahr el Ghazal (DTM, OCHA).

2021

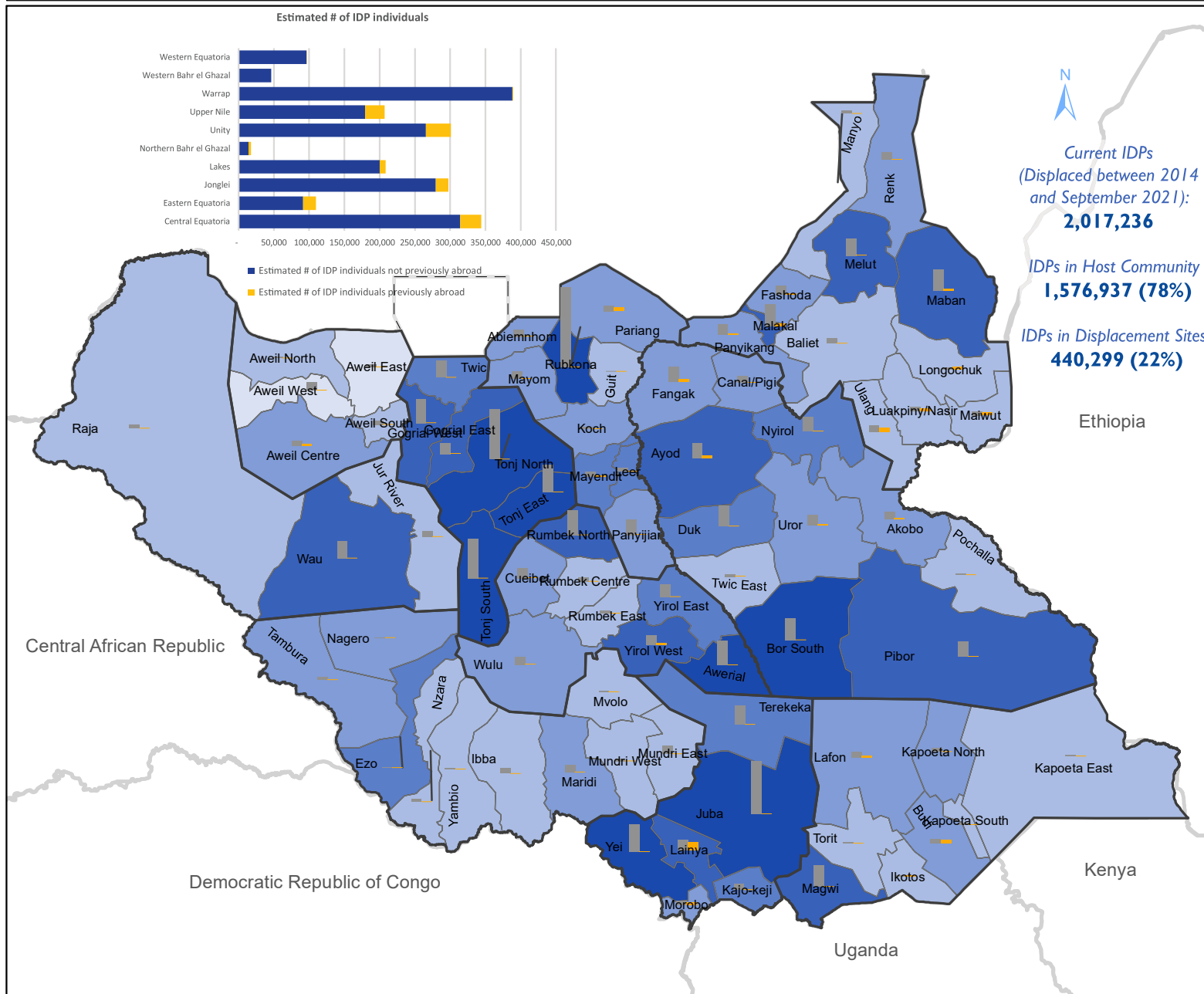


551,967 IDPs were displaced as of September 2021. The main reason for displacement are natural disasters (mainly floods) (56%), conflict (25%) and communal clashes (15%).

400,262 individuals had returned during this period, of which 36% were previously abroad.

- During the first months of the year, populations continued being displaced due the flood during 2020.
- **Since May** severe floods displaced populations along the Nile, with Jonglei, Unity and Upper Nile state being the worst affected states (DTM, OCHA).

IDPs by County as of September 2021



South Sudan

Mobility Tracking
Round 11, September 2021

State
County

IDPs Individuals

100 - 1,000
1,001 - 10,000
10,001 - 20,000
20,001 - 30,000
30,001 - 60,000
60,001 - 145,000

70,000
Subset of IDP individuals (not previously abroad) present at time of assessment
Subset of IDP individuals present at time of assessment who were previously displaced abroad

10 counties accounting for most IDPs as of September 2021

County	Individuals
Rubkona	174,545
Juba	142,242
Tonj North	108,126
Yei	85,550
Tonj South	82,465
Bor South	73,851
Tonj East	69,063
Awerial	62,323
Gogrial West	59,619
Ayod	55,014

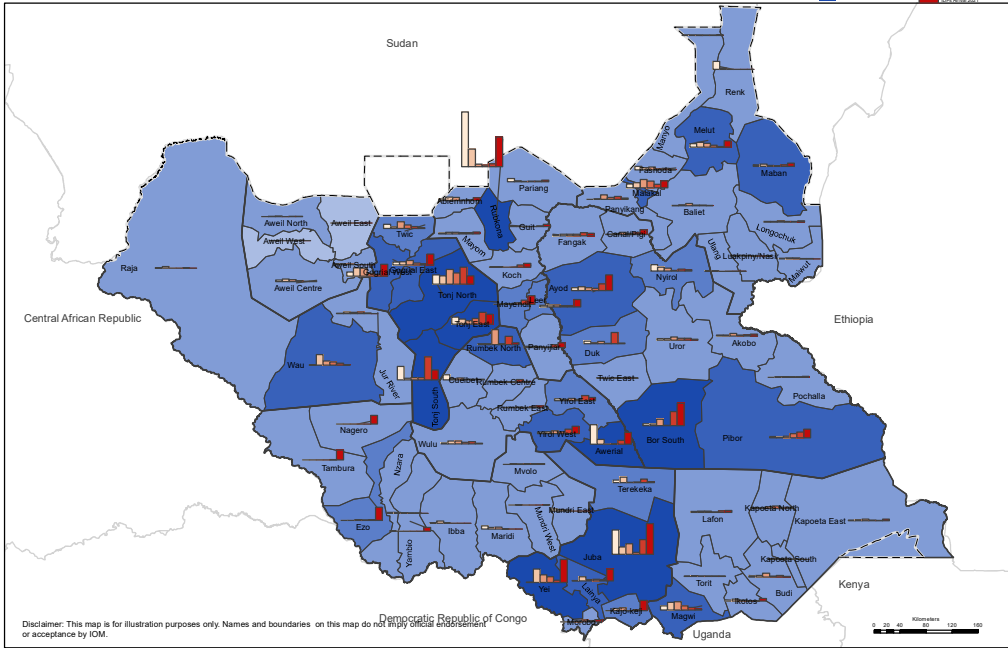
*Renk (data as of December 2020)

Disclaimer: This map is for illustration purposes only. Names and boundaries on this map do not imply official endorsement or acceptance by IOM.

Kilometers
0 25 50 100 150 200



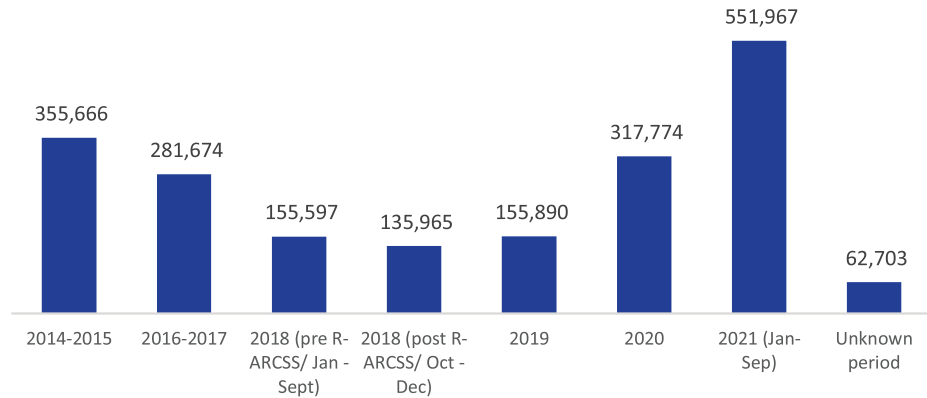
South Sudan
 Mobility Tracking Round 11, September 2021
 Subset of IDPs who arrived from
 within South Sudan as of September 2021



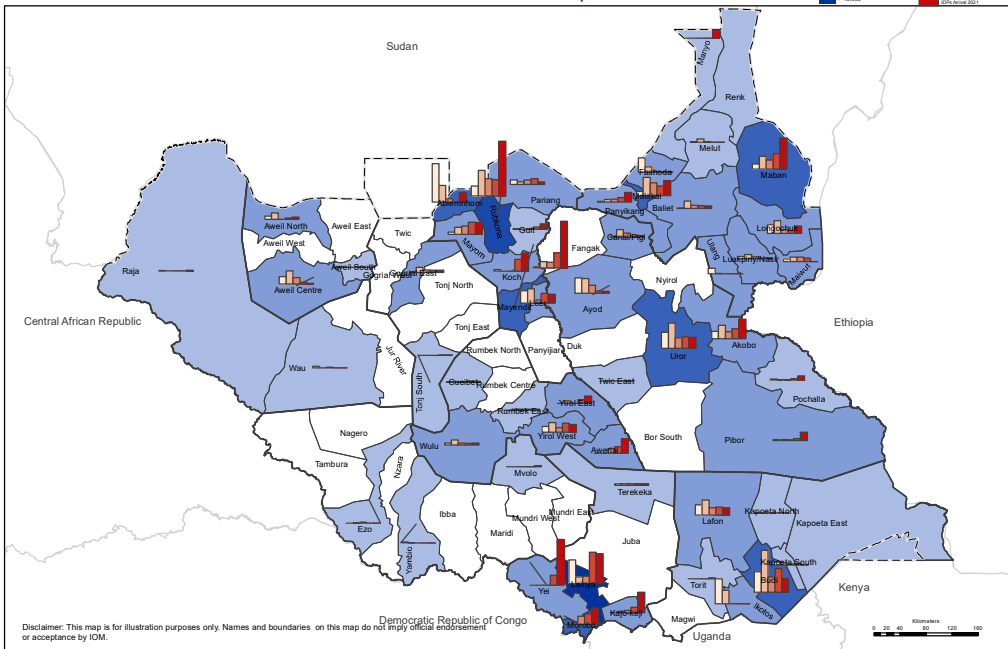
10 counties accounting for most IDP arrivals in 2021 (Jan - Sept 2021)
 Accounting for 52% of the caseload displaced in this period

• Juba	48,815	• Ezo	20,828
• Rubkona	47,194	• Lainya	9,409
• Yei	36,613	• Gogrial West	19,055
• Bor South	35,591	• Awerial	18,500
• Ayod	24,823	• Gogrial East	17,670

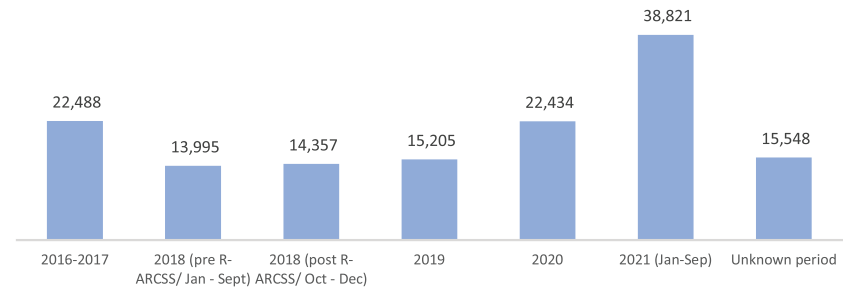
Total number of IDP individuals present by period of arrival



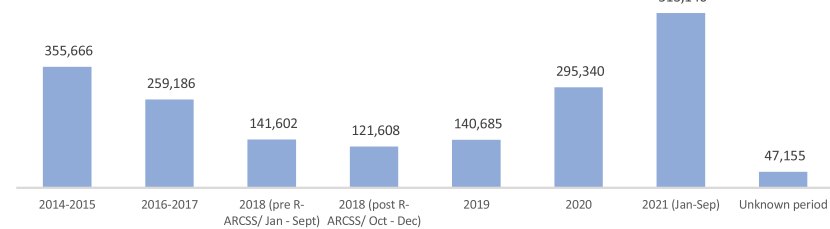
South Sudan
 Mobility Tracking Round 11, September 2021
 Subset of IDPs who arrived from
 abroad South Sudan as of September 2021



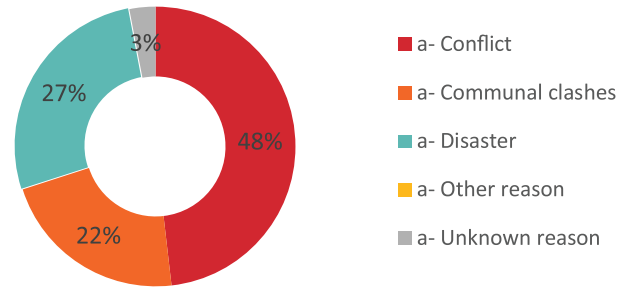
Subset of IDP individuals present at time of assessment who were previously displaced abroad by period of arrival



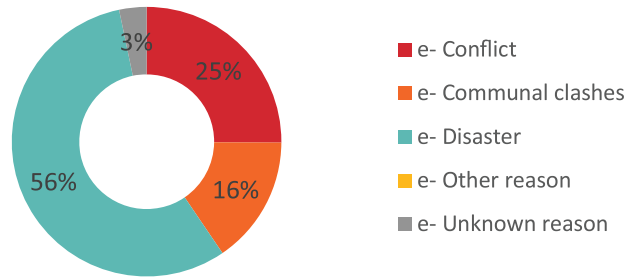
Subset of IDP individuals present at time of assessment who were previously displaced within South Sudan by period of arrival at current location



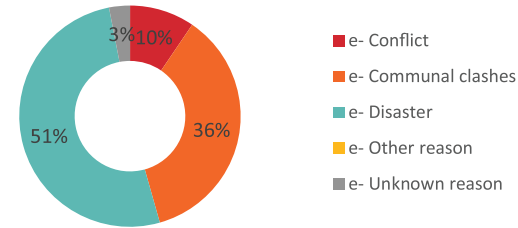
Reason of displacement (total IDPs)



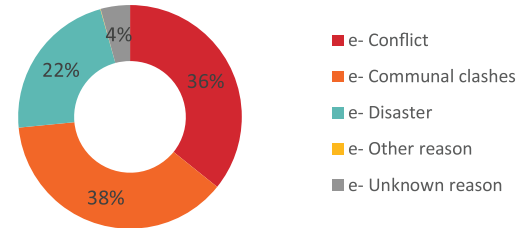
Reason of displacement (arrival 2021 Jan-Sep)



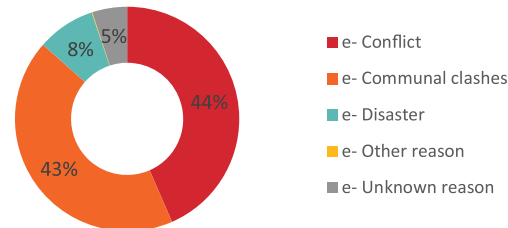
Reason of displacement (arrival 2020)



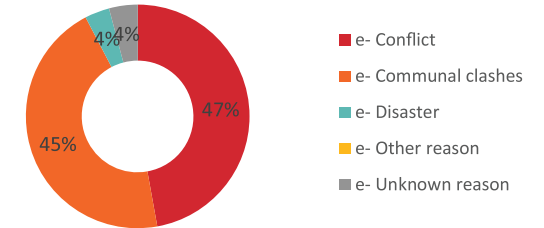
Reason of displacement (arrival 2019)



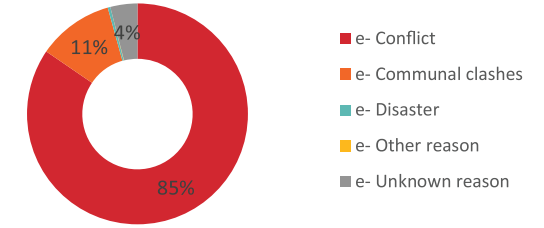
Reason of displacement (arrival 2018 post R-ARCSS)



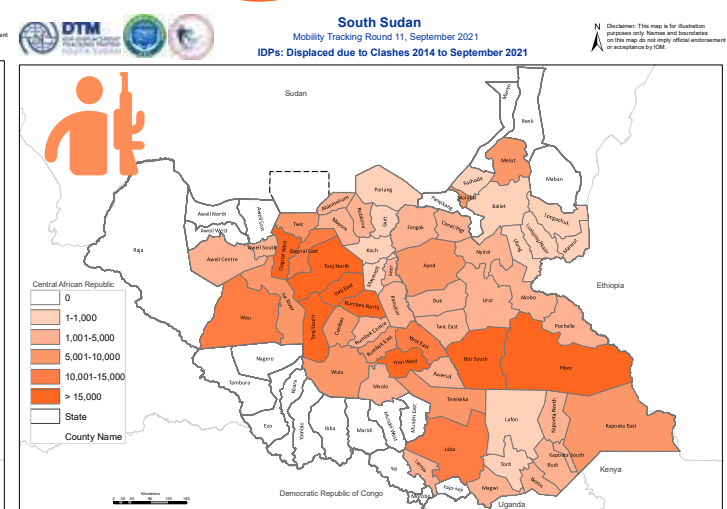
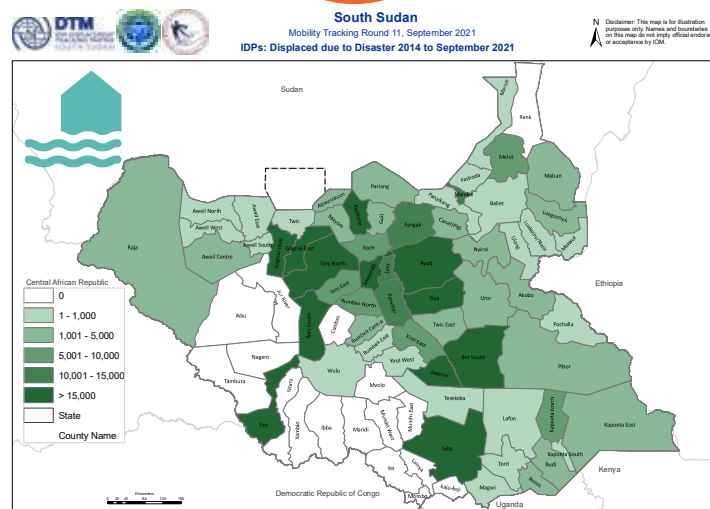
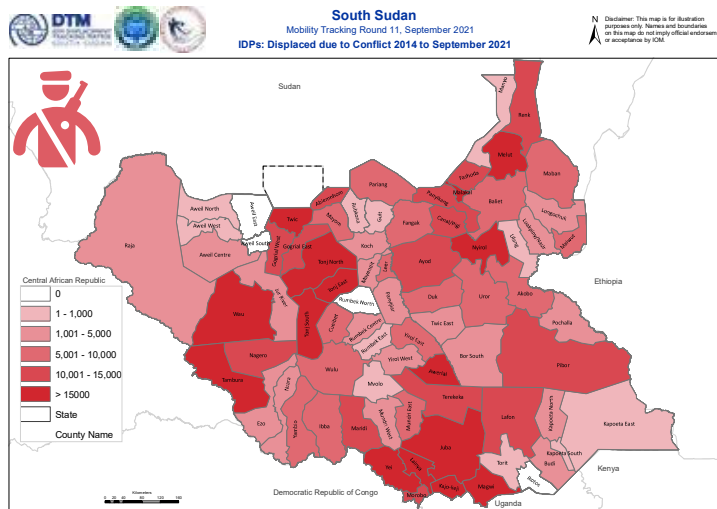
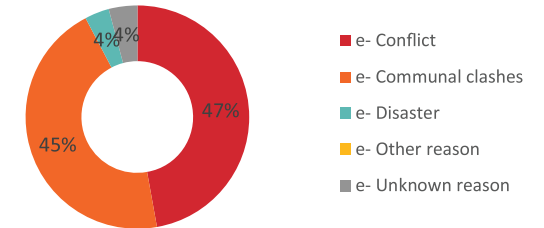
Reason of displacement (arrival 2018 pre R-ARCSS)



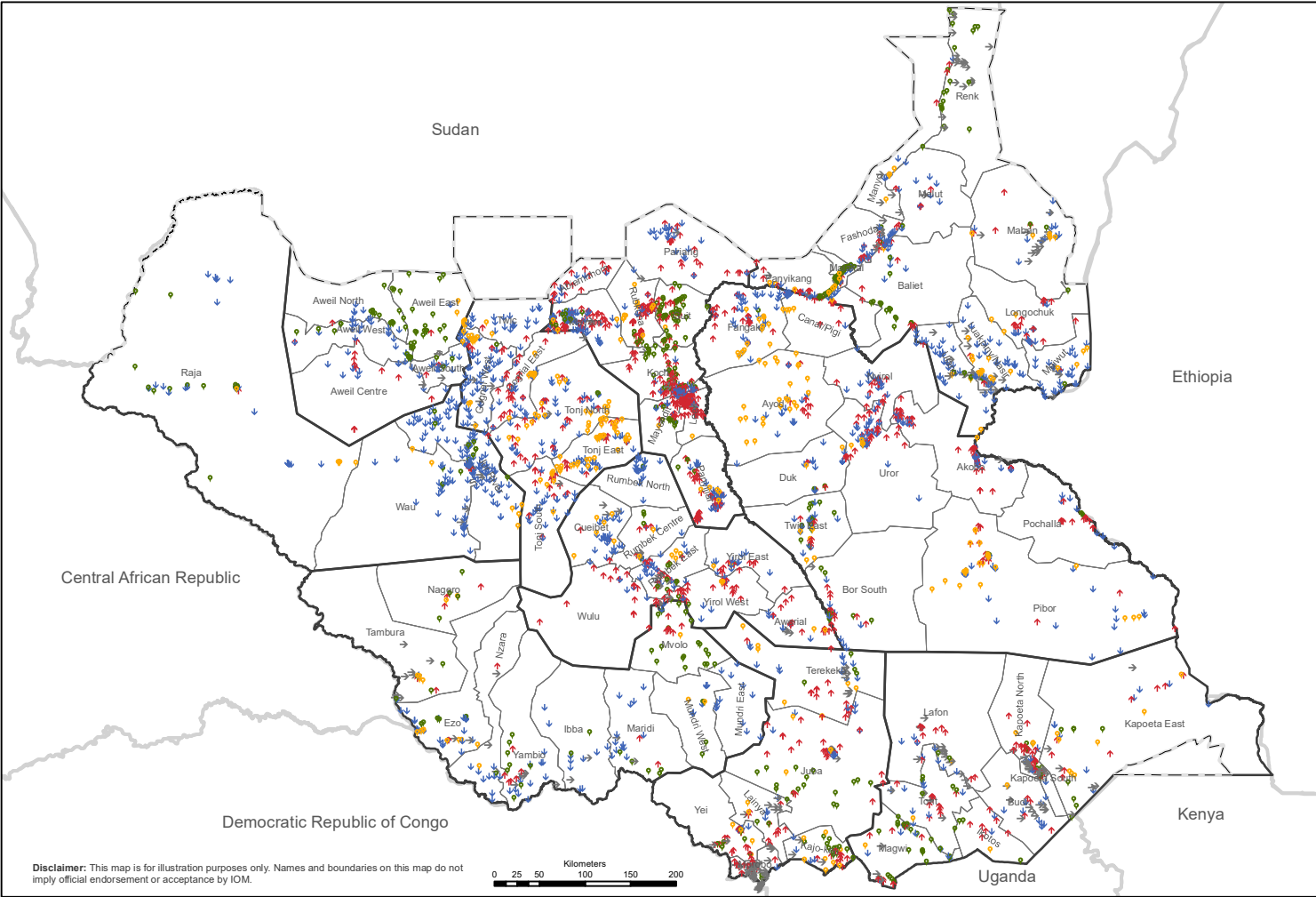
Reason of displacement (arrival 2016-2017)



Reason of displacement (arrival 2014-2015)



Note: The maps contain layers for each recorded time period. These layers can be accessed in Adobe Acrobat's "Layers" pane under the folder "Conflict" / "Disaster" / "Clashes". Selecting and unselecting individual layers allows user to visualize displacement by time period



Counties with the most significant net decreases in the number of IDPs were:

- Fangak (-21,885)
- Terekeka (-16,696)
- Maban (-15,300)
- Aweil West (15,095)
- Duk (-12,576)
- Ulang (-12,265)
- Panyijar (-10,273)

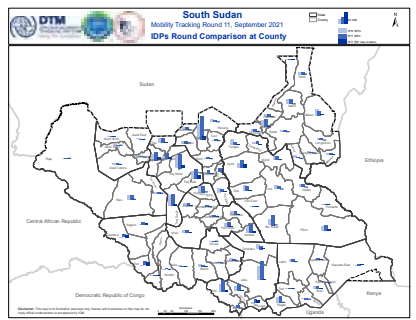
The main counties witnessing net increases in the number IDPs since round 10 were:

- Juba (+39,052)
- Bor South (+32,068)
- Rubkona (+22,203)
- Yei (+19,018)
- Leer (+19,018)

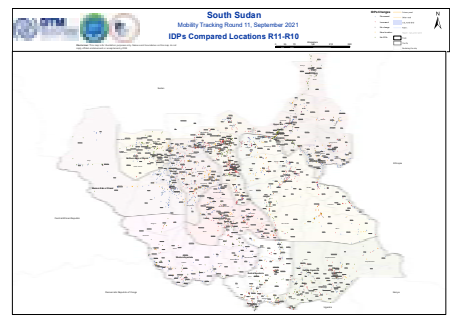
The counties with the highest numbers of IDPs in new locations are:

- Ayod (27,660)
- Rubkona (24,836)
- Ezo (22,206)
- Tonj East (22,165)
- Kajo-Keji (19,074)

County Map (A4)



Location Map (A0)





South Sudan

Mobility Tracking Round 11, September 2021

IDPs by current sub areas and by home before displacement

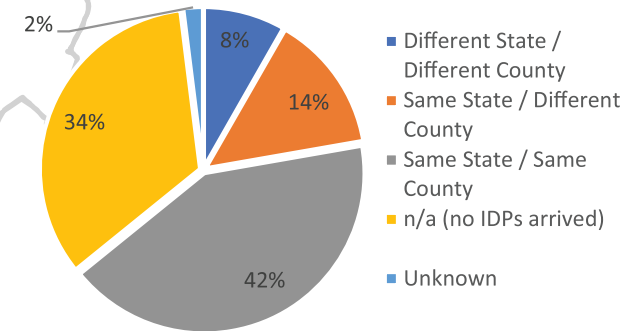


Disclaimer: Disclaimer: This map is for illustration purposes only. Names and boundaries on this map do not imply official endorsement or acceptance by IOM.



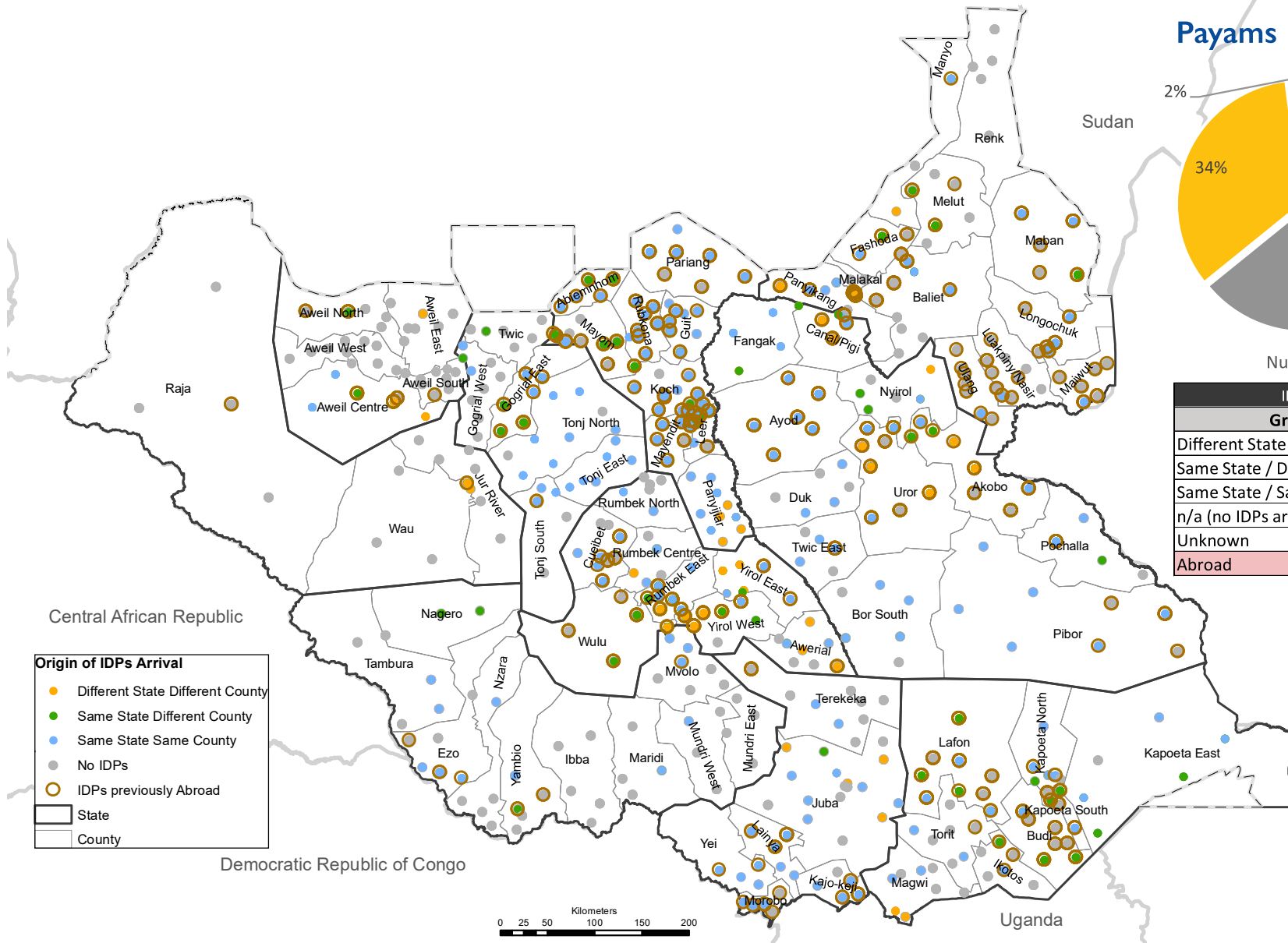
IDP Arrival 2021

Payams by origin of the IDPs



Number of payams by IDP origins for all IDPs

IDP Home	# of payams	Percent
Grand Total	508	100%
Different State / Different County	39	8%
Same State / Different County	53	10%
Same State / Same County	199	39%
n/a (no IDPs arrived)	200	39%
Unknown	17	3%
Abroad	140	28%



Central African Republic

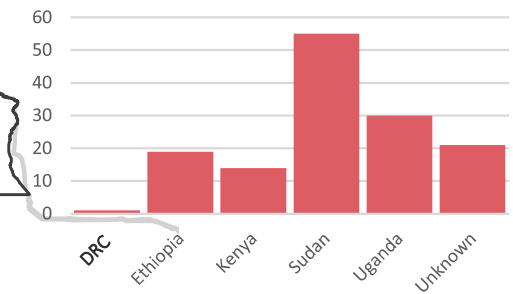
Origin of IDPs Arrival

- Different State Different County
- Same State Different County
- Same State Same County
- No IDPs
- IDPs previously Abroad
- State
- County

Democratic Republic of Congo



Number of payams reporting IDPs previously displaced abroad



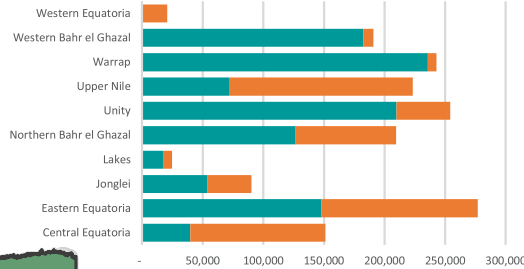


DTM
IOM DISPLACEMENT
TRACKING MATRIX
SOUTH SUDAN



Returns by County as of September 2021

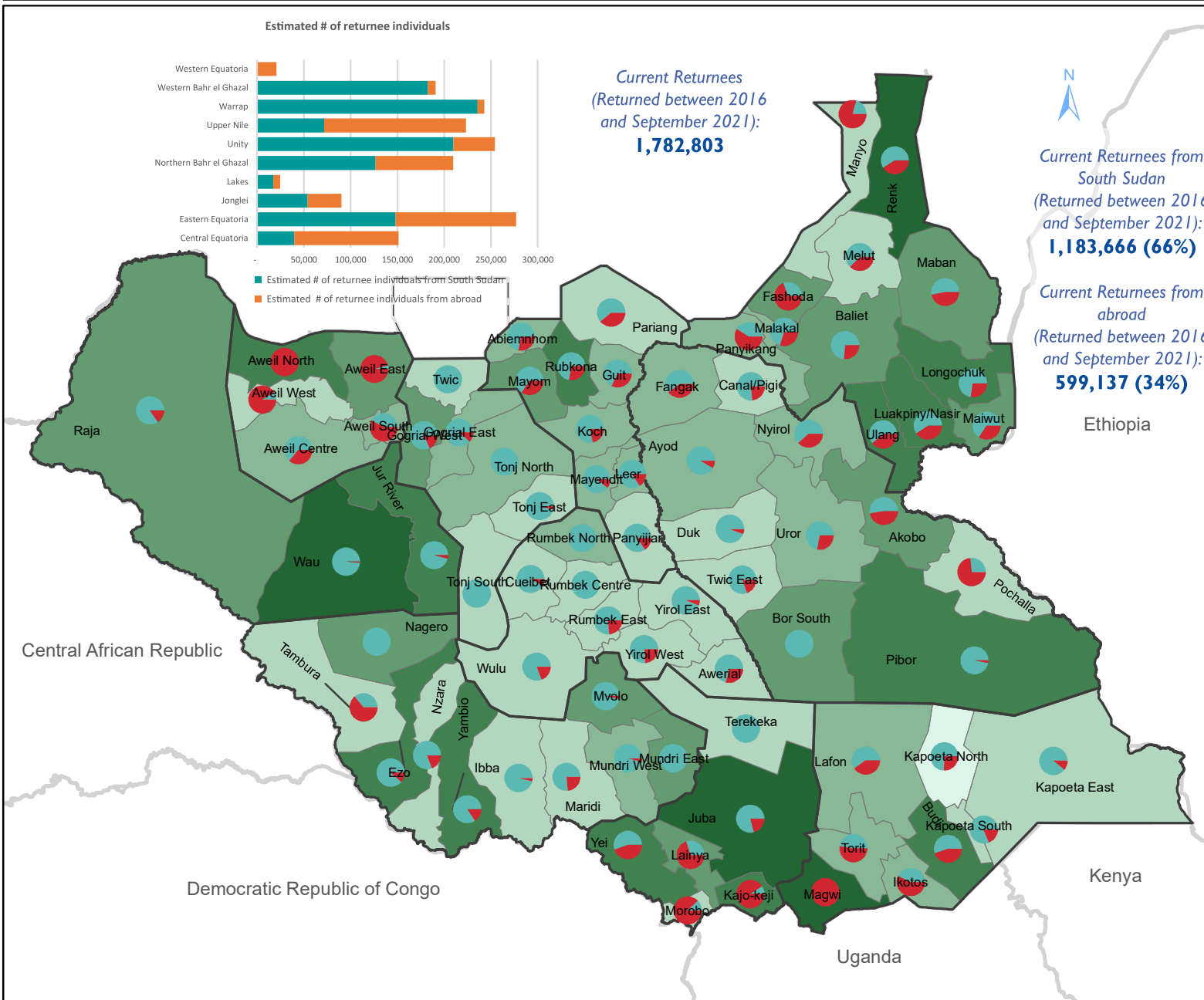
Estimated # of returnee individuals



Current Returnees
(Returned between 2016
and September 2021):
1,782,803

Current Returnees from
South Sudan
(Returned between 2016
and September 2021):
1,183,666 (66%)

Current Returnees from
abroad
(Returned between 2016
and September 2021):
599,137 (34%)



South Sudan

Mobility Tracking
Round 11, September 2021

State
County

Returnee Individuals

- 100 - 1,000
- 1,001 - 10,000
- 10,001 - 20,000
- 20,001 - 30,000
- 30,001 - 60,000
- 60,001 - 150,000

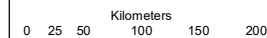
- Subset of returnee individuals (previously displaced only in South Sudan) present at time of assessment
- Subset of returnee individuals (previously displaced abroad) present at time of assessment

10 counties accounting for most Returnees as of September 2021

County	Individuals
Wau	171,394
Magwi	96,270
Renk	87,401
Juba	65,202
Kajo-Keji	55,975
Yei	50,613
Luakpiny (Nasir)	50,542
Jur River	46,281
Rubkona	45,893
Pibor	45,557

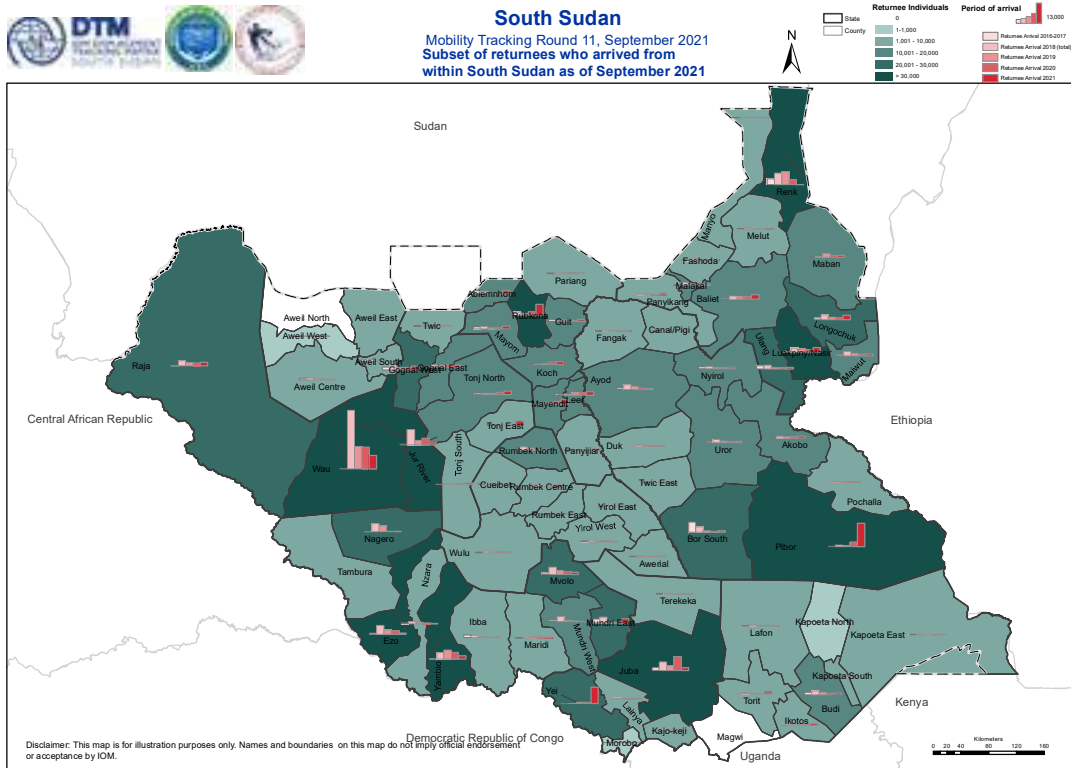
*Renk (data as of December 2020)

Disclaimer: This map is for illustration purposes only. Names and boundaries on this map do not imply official endorsement or acceptance by IOM.

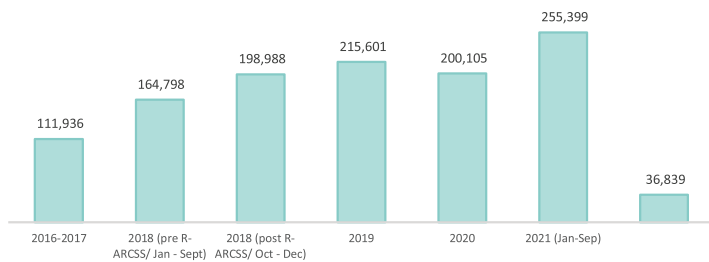




Current Returnees from South Sudan
(Returned between 2016 and September 2021:
1,183,666 (66%))

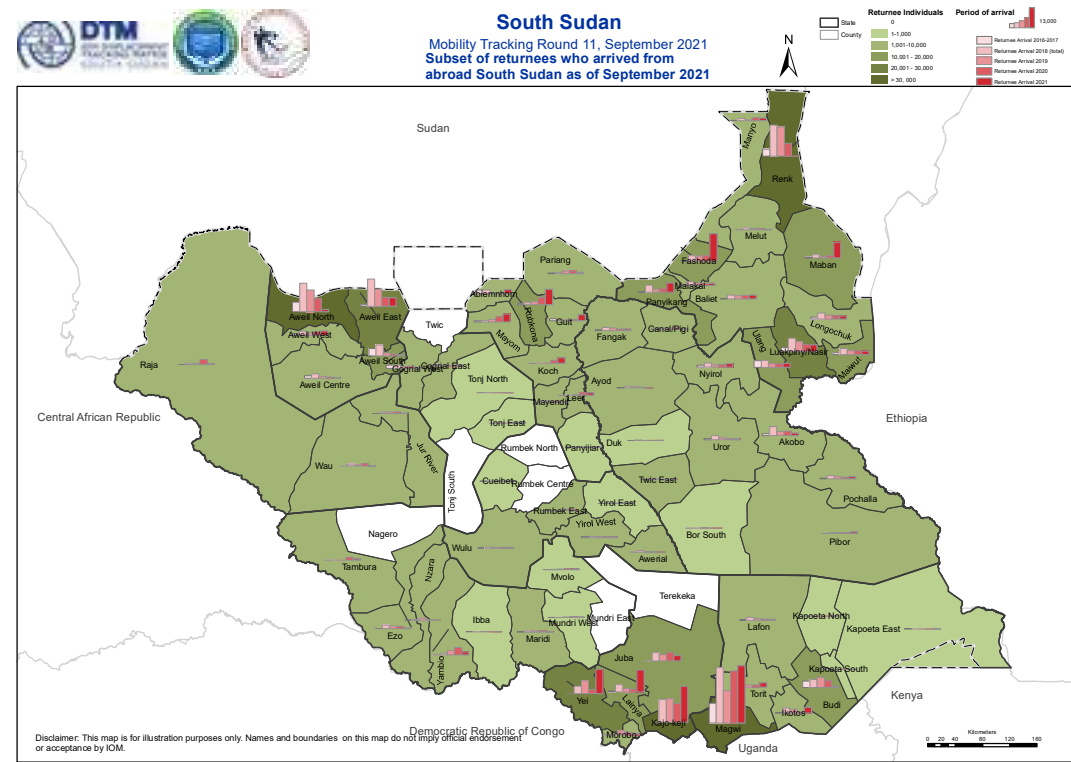


Subset of returnee individuals (previously displaced in South Sudan) present at time of assessment by period of arrival

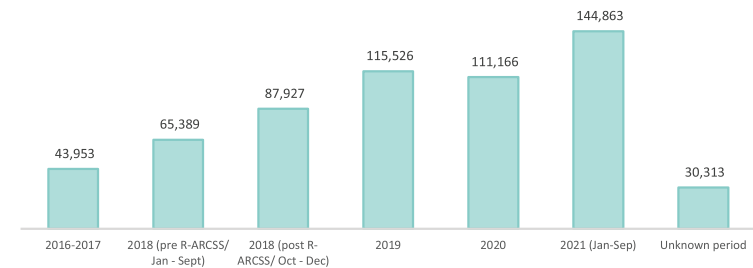


870,093 returnees previously displaced in SSD who arrived since 2018 post-R-ARCSS were present at the time of assessment. Of these, 255,399 arrived in 2021 (January-September) alone.

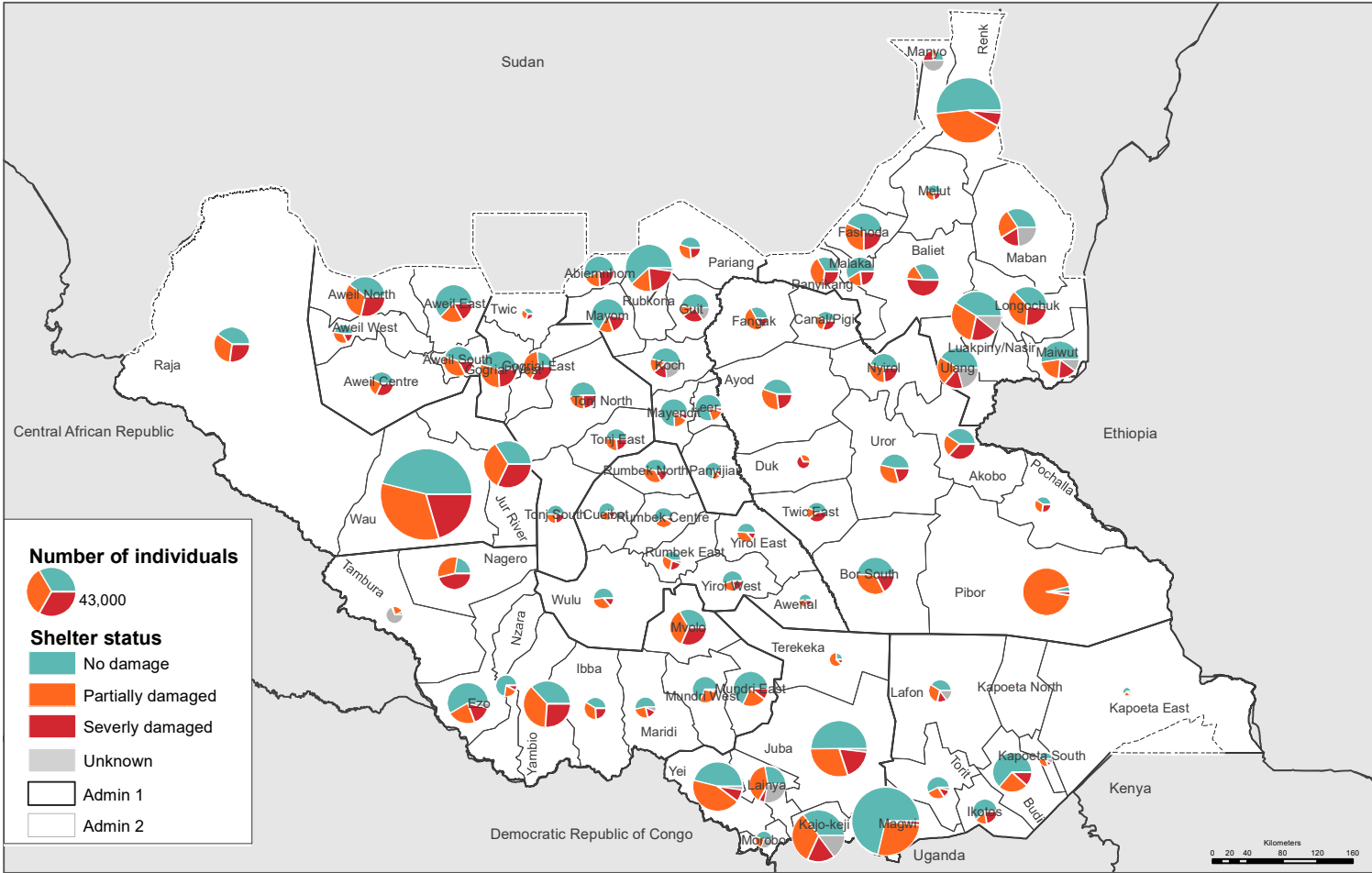
Current Returnees from abroad
(Returned between 2016 and September 2021): 599,137 (34%)



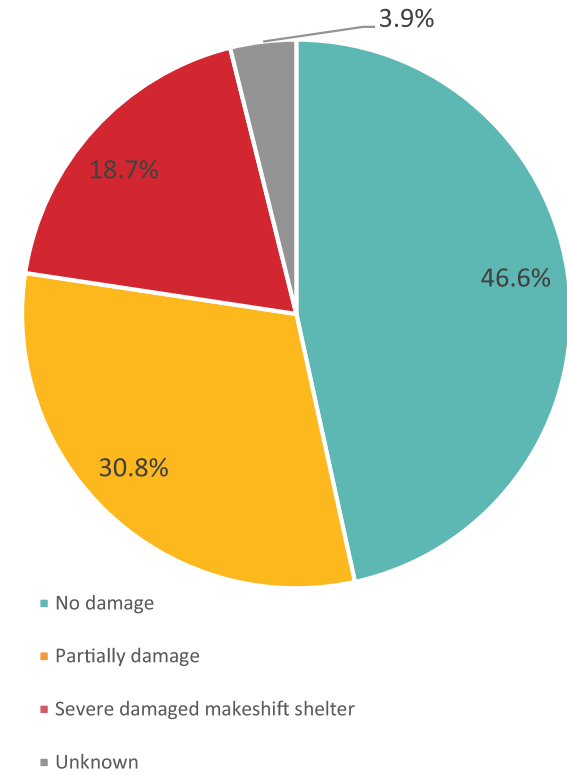
Subset of returnee individuals (previously displaced abroad) present at time of assessment by period of arrival



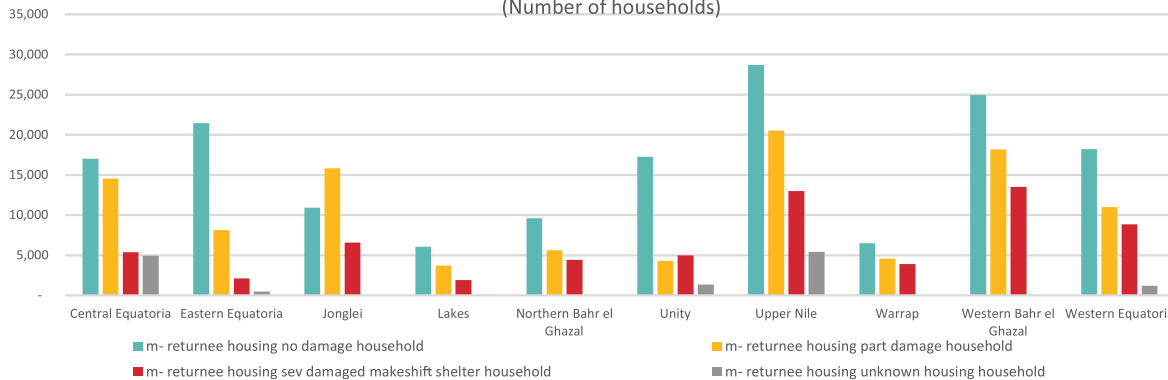
459,482 previously displaced abroad who arrived since 2018 post-R-ARCSS were present at the time of assessment. Of these, 144,863 arrived in 2021 (January-September) alone.



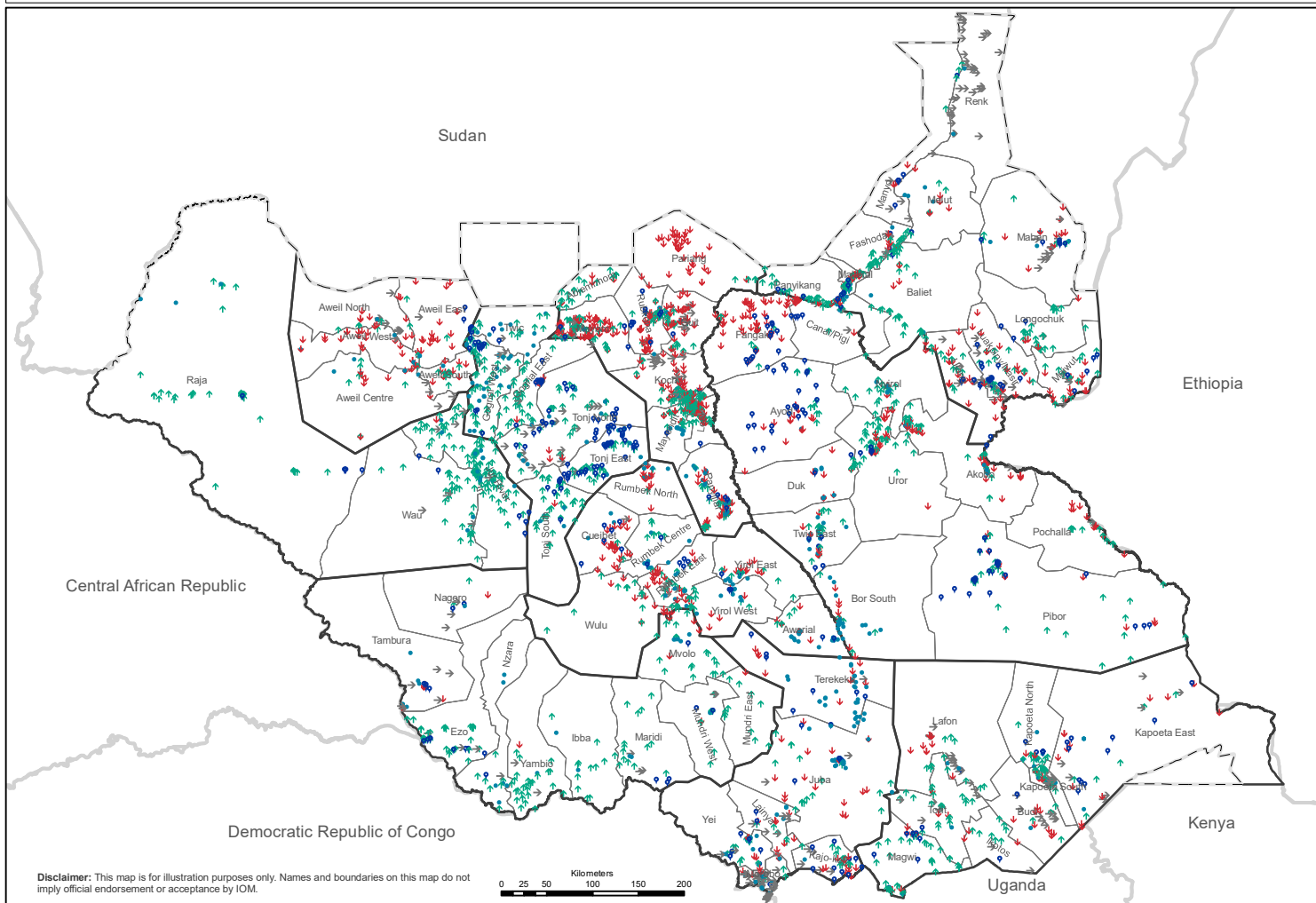
Returnees shelter status (Household percentage)



Returnees shelter status by state (Number of households)



328,738 returnees are living in severely damaged makeshift shelters



Counties with the largest increases in the number of returnees were:

- Yei (+26,328)
- Magwi (+19,935)
- Pibor (+14,725)
- Fashoda (+9,768)
- Longochuk (+7,851)
- Mundri East (+7,336)

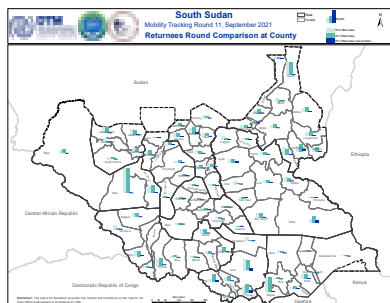
The main counties witnessing decreases in the number of returnees since round 10 were:

- Tambura (-21,136)
- Juba (-20,260)
- Terekeka (-15,952)
- Aweil West (-15,523)
- Fangak (-14,107)

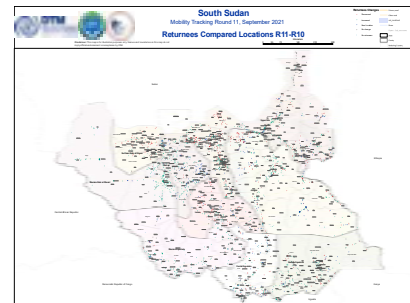
The counties with the highest numbers of returnees in new locations are:

- Kajo-Keji (15,460)
- Rubkona (12,990)
- Pibor (12,637)
- Luakpiny / Nasir (11,887)
- Juba (11,755)
- Yei (8,885)

County Map (A4)



Location Map (A0)



South Sudan

Mobility Tracking Round 11, September 2021

Returns by current sub areas and by previous displacement

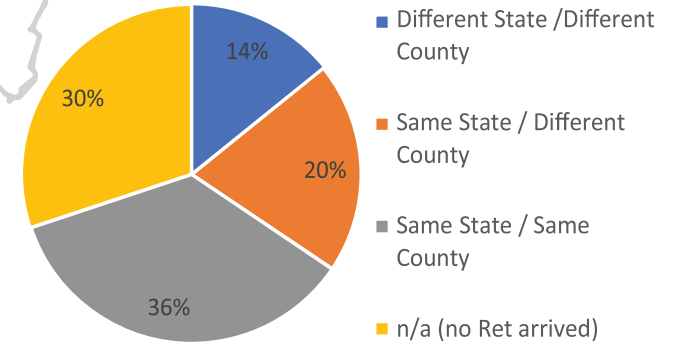


Disclaimer: Disclaimer: This map is for illustration purposes only. Names and boundaries on this map do not imply official endorsement or acceptance by IOM.



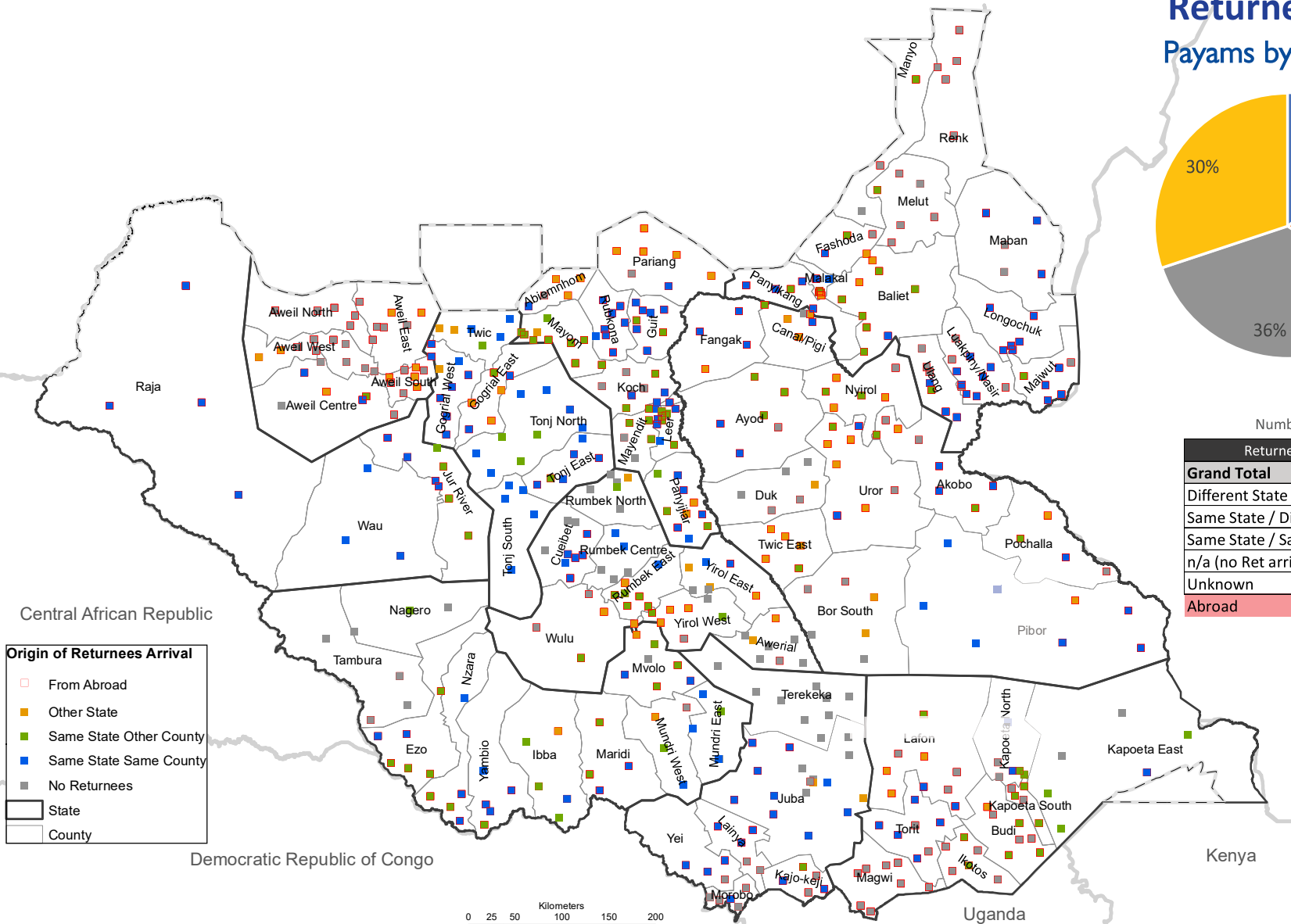
Returnee Arrival 2021

Payams by origin of the returnees

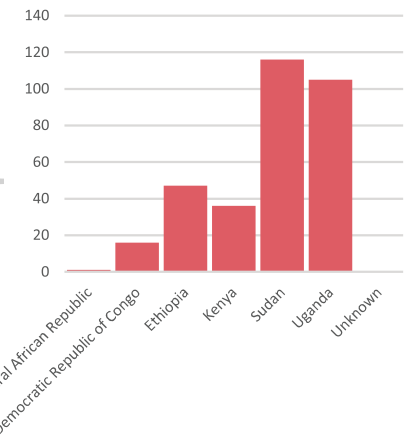


Number of payams by returnee origin for all returnees

Returnee Displacement	# of payams	Percent
Grand Total	508	100%
Different State / Different County	72	14%
Same State / Different County	103	20%
Same State / Same County	180	35%
n/a (no Ret arrived)	153	30%
Unknown	0	0%
Abroad	283	56%



Number of payams reporting returnees from abroad





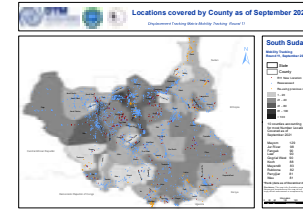
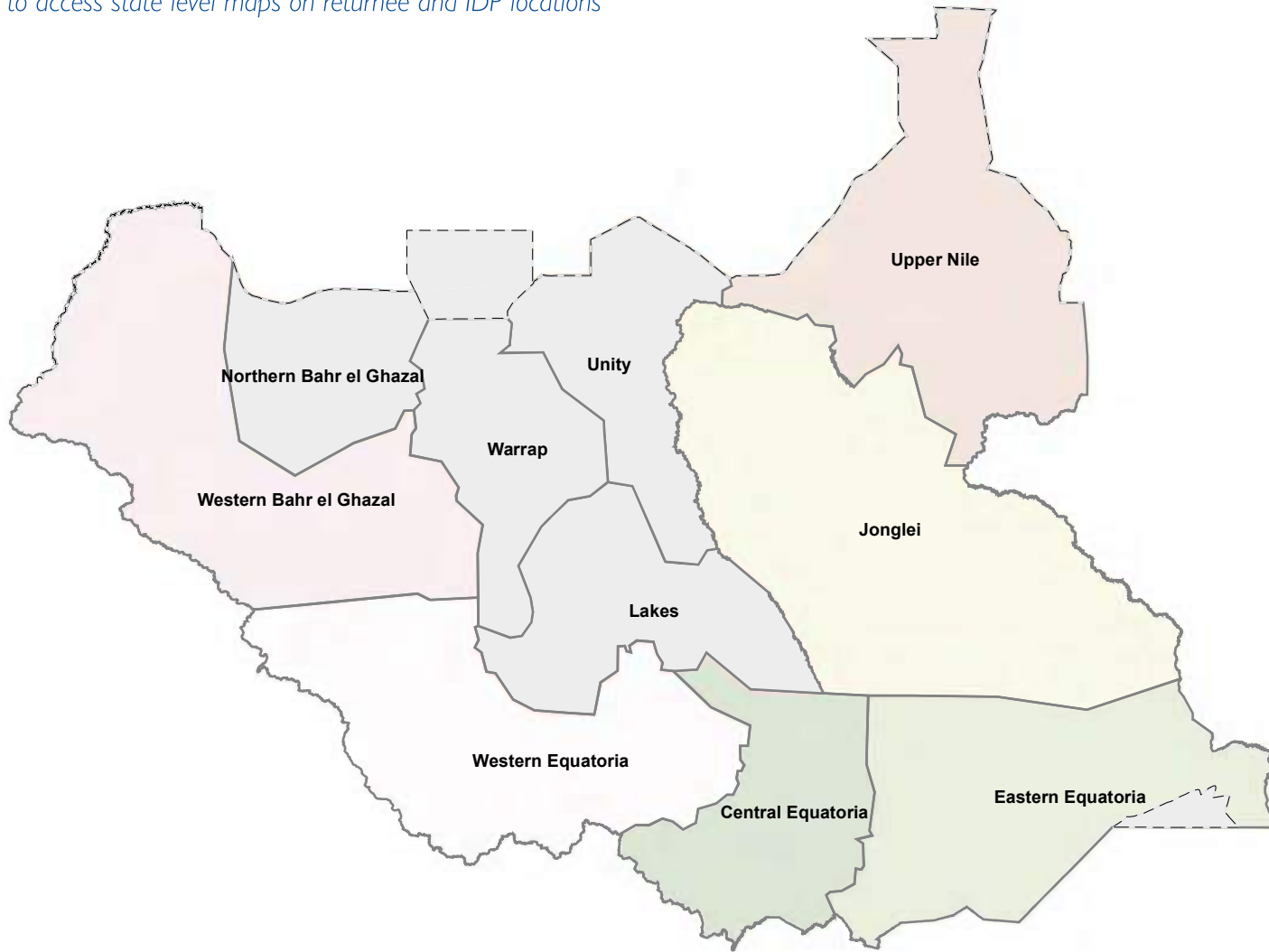
STATE ATLAS: IDPs and RETURNEES LOCATIONS

Click to access state level maps on returnee and IDP locations

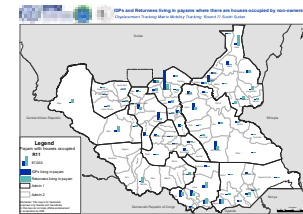
Baseline by locations (3,335)
Baseline by payam (508)



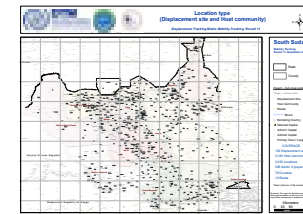
CLICK TO ACCESS OTHER THEMATIC MAPS



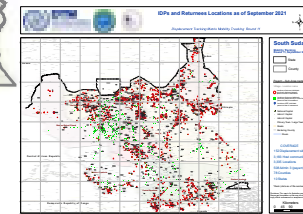
Locations covered by county



IDPs and returnees living in payams where there are houses occupied by non-owners



Location type (Displacement site and host community) A0 map



IDPs and Returnees locations A0 map

DTM IS SUPPORTED BY



For more information please contact SouthSudanDTM@iom.int or visit displacement.iom.int/south-sudan