

EMERGENCY EVENT TRACKING: Kalma Camp, South Darfur

UPDATE 1: 23 April 2020

Data collection: 20 April 2020

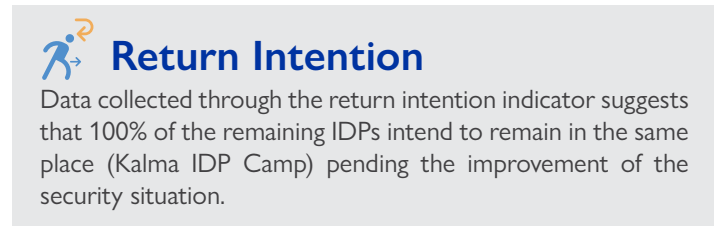
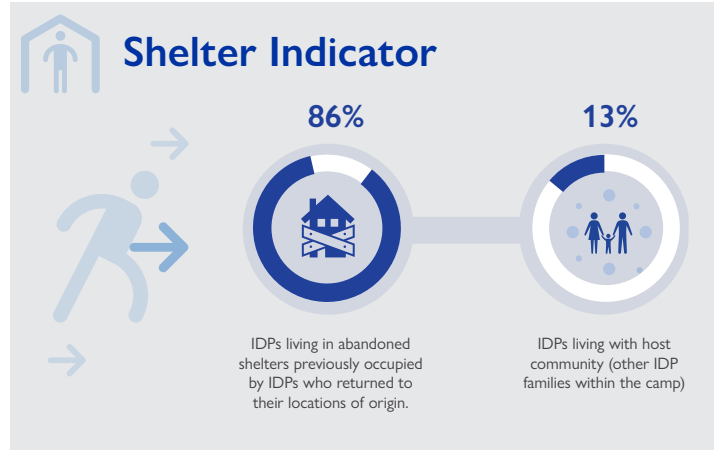
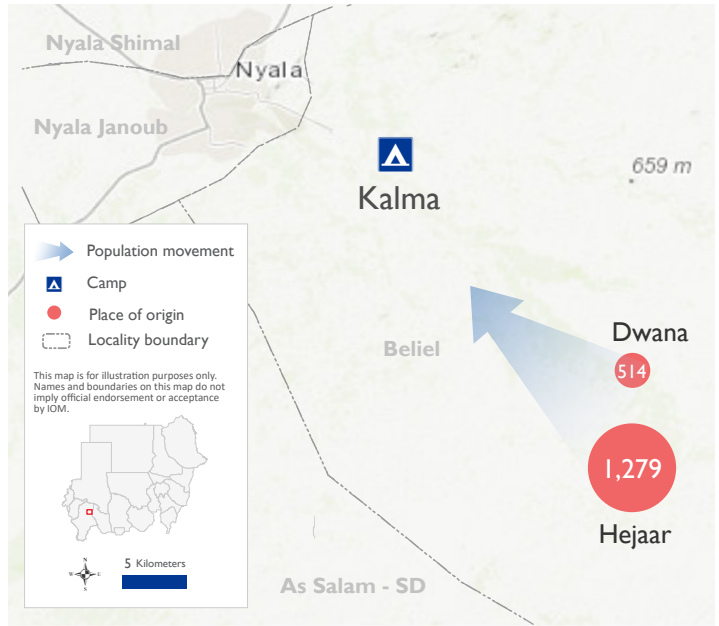
The DTM Emergency Event Tracking (EET) is deployed to track sudden displacement and population movements, provide more frequent updates on the scale of displacement and quantify the affected population when needed. As a subcomponent of the new Mobility Tracking methodology in Sudan ([Round Zero](#)), and activated on a needs basis, EET utilises a broad network of key informants to capture best estimates of the affected population presence per location – a useful tool for humanitarian response planning and design.

Event Overview

1,793
Individuals

300
Households

DTM teams activated EET to monitor the displacement of individuals affected by the clashes in Dwana and Hejaar villages in Beliel locality, South Darfur between the local community and nomads on 9 March 2020. Affected individuals were displaced to Kalma IDP camp in South Darfur. This first EET update estimates a total number of 1,793 individuals (300 households) situated in Kalma Camp, from which 1,279 arrived from Hejaar and 514 from Dwana. Reports from the field indicate that one house was burned down, 55 goats were looted and three donkey carts were burned following the clashes.



IOM DISCLAIMER

The opinions expressed in the report are those of the authors and do not necessarily reflect the views of the International Organization for Migration (IOM). The designations employed and the presentation of material throughout the report do not imply the expression of any opinion whatsoever on the part of IOM concerning the legal status of any country, territory, city or area, or of its authorities, or concerning its frontiers or boundaries.

IOM is committed to the principle that humane and orderly migration benefits migrants and society. As an intergovernmental organization, IOM acts with its partners in the international community to: assist in the meeting of operational challenges of migration; advance understanding of migration issues; encourage social and economic development through migration; and uphold the human dignity and well-being of migrants.

