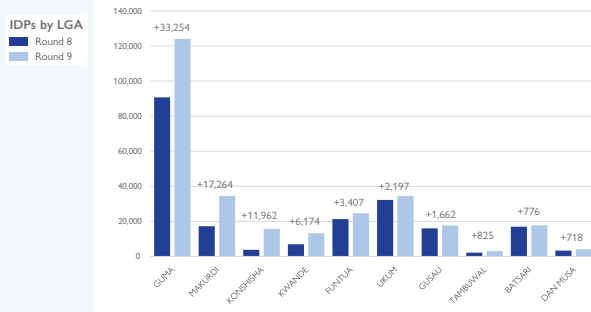




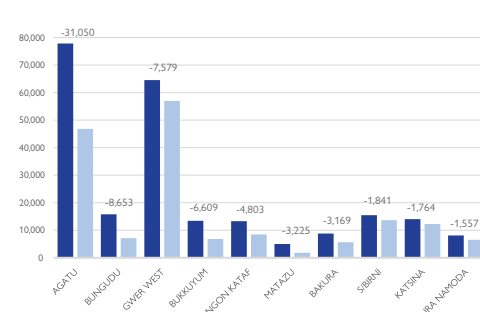
### IDP population variation between round 8 and 9 | Top LGAs with variation

ROUNDS	Population increase		Population decrease	
	GUMA	MAKURDI	AGATU	BUNGUDU
9	123,989 <b>+33,254</b>	34,515 <b>+17,264</b>	46,795 <b>-31,050</b>	7,130 <b>-8,653</b>
8	90,735	17,251	77,845	15,783
Reasons	<b>Guma:</b> The IDP population increased as a result of newly assessed locations during a joint rapid data verification assessment.	<b>Makurdi:</b> The IDP population increased as a result of newly assessed locations during a joint rapid data verification assessment.	<b>Agatu:</b> The decrease in population was as a result of the joint rapid data verification assessment carried out within the LGA.	<b>Bungudu:</b> The IDP population decreased due to insecurity within the LGA.

#### Top LGAs with IDP population increase



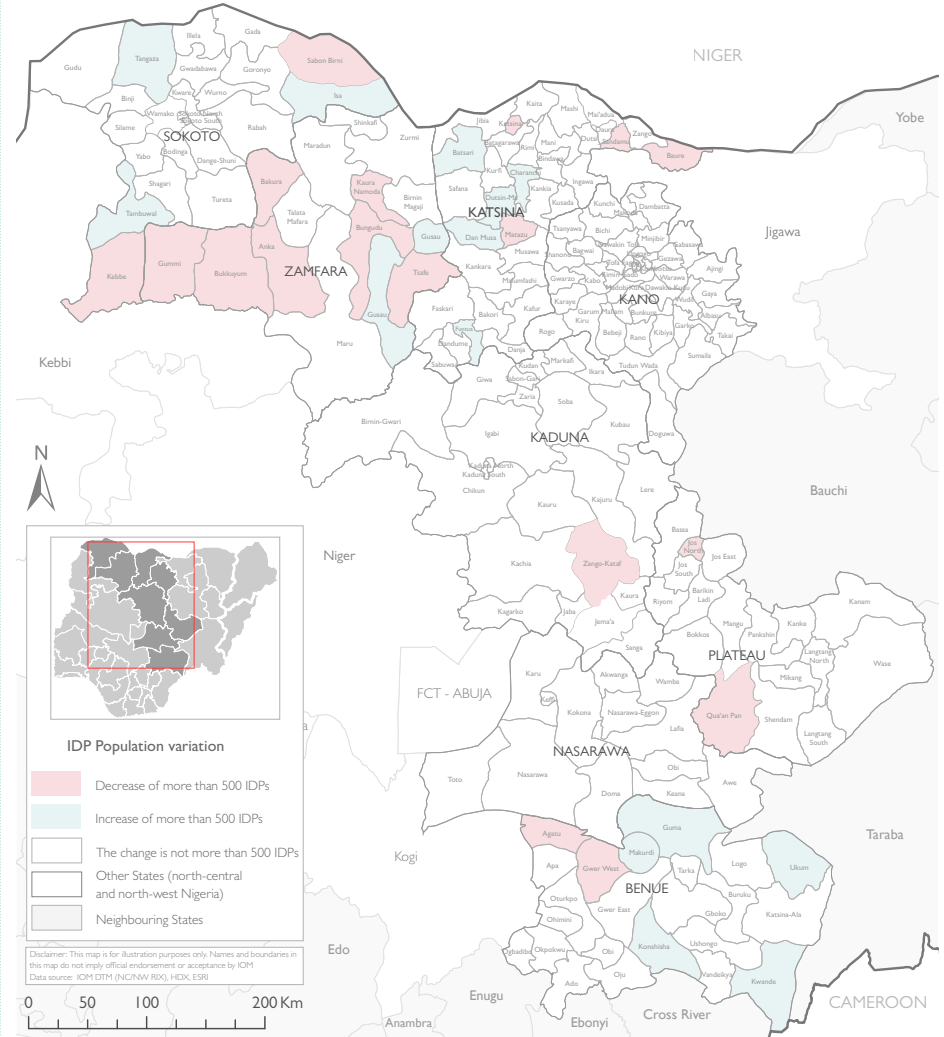
#### Top LGAs with IDP population decrease



Reasons for population Increase	%
Insecurity	40%
Newly assessed locations during joint rapid data verification assessment	40%
Communal clashes	10%
New arrivals due to incessant bandits activities	10%

Reasons for population Decrease	%
Return to place of origin due to improved security	30%
Due to improved security in the area	20%
Insecurity	20%
Due to the joint rapid data verification assessment	20%
Many places in the area are inaccessible	10%

#### IDP presence at LGA level



DISCLAIMER: The depiction and use of boundaries, geographic names, and related data shown on maps are not warranted to be error free nor do they imply judgment on the legal status of any territory, or any endorsement or acceptance of such boundaries by IOM.

For more information or to report an alert, please contact: DTM Nigeria: [iomnigeria@iom.int](mailto:iomnigeria@iom.int) | <https://displacement.iom.int/nigeria> ; <https://dtm.iom.int/nigeria>

