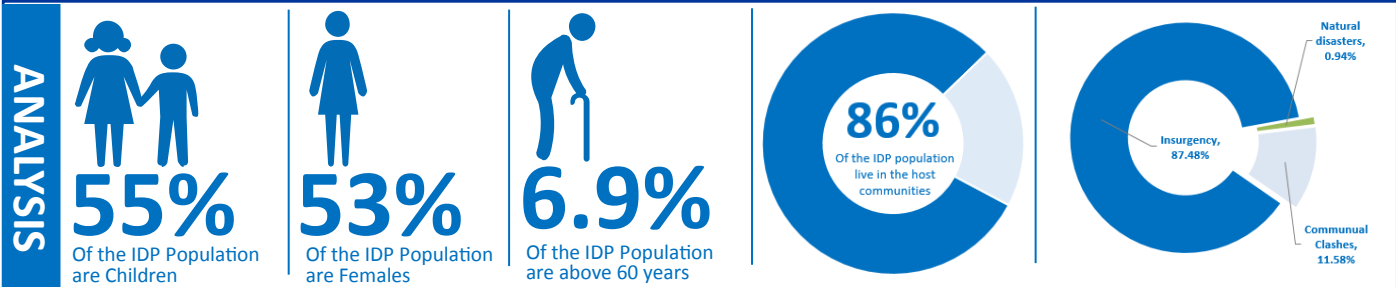
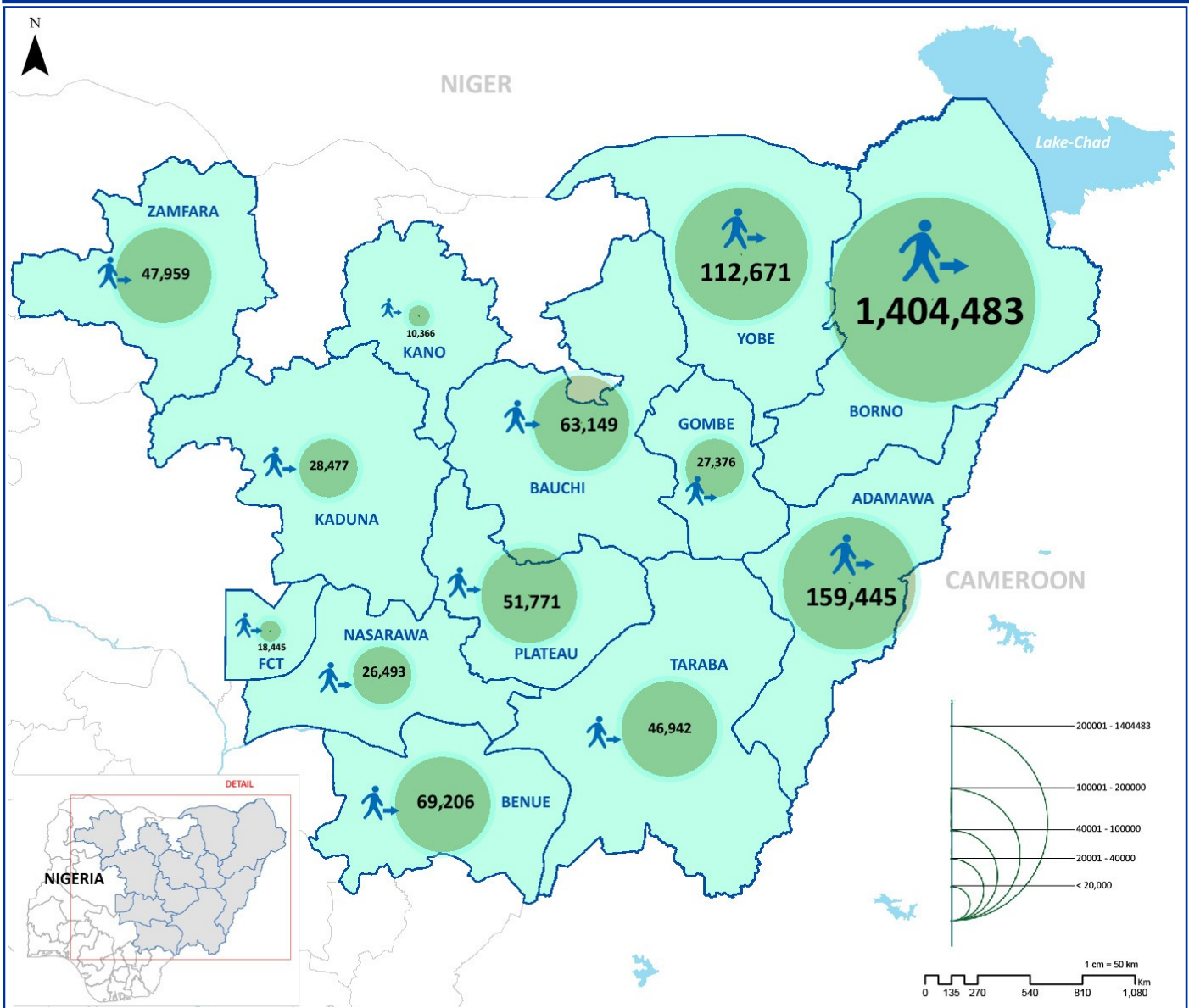


- ◆ **2,066,783** IDPs (344,564 households) were identified in Adamawa, Bauchi, Benue, Borno, Gombe, Taraba, Yobe, Nasarawa, Plateau, Kaduna, Kano, Zamfara states and Abuja FCT.
- ◆ In total, **1,808,021** IDPs captured through the DTM assessments have been displaced by the insurgency (87.5% of the total IDP population).
- ◆ Majority of the IDPs are identified in Borno (1,404,483) followed by Adamawa (159,445) and Yobe (112,671).



OVERVIEW

In response to the need for accurate information on internally displaced persons (IDPs), the International Organization for Migration (IOM) began implementing the Displacement Tracking Matrix (DTM) project in July 2014. The project is supporting the Government of Nigeria and other humanitarian response partners in the field to conduct IDPs assessments in a systematic way, as well as to establish a profile of the IDP population.

Working in close collaboration with the National Emergency Management Agency (NEMA) and State Emergency Management Agencies (SEMAs), IOM's DTM programme worked to expand reach to the newly coverage in addition to addressing the needs of accessible areas and gathering accurate information on the caseload of internally displaced persons (IDPs). The DTM teams are composed of representatives of NEMA, SEMAs, the Nigerian Red Cross and IOM. The assessment includes the collection of baseline information at LGAs and ward level and detailed surveys in camps and camp-like sites.

The need for immediate humanitarian response was escalated further with the Nigerian military liberating more areas that were previously under the control of the Boko Haram in the insurgency-hit North-Eastern State of Borno. Two more LGAs are now accessible out of the 27 LGAs in Borno State, taking the figure of accessible LGAs to 17. This is in addition to the assessments ongoing in 13 states (Abuja FCT, Adamawa, Bauchi, Benue, Borno, Gombe, Kaduna, Kano, Nasarawa, Plateau, Taraba, Yobe and Zamfara) that cover a total of 218 LGAs and 1,331 wards where IDPs had been identified.

Bama, which was the site for some of the worst clashes between Boko Haram and the Nigerian military, and Dikwa – both in Borno State – are the two major accessible areas that the DTM programme was able to reach in June. 25,470 individuals were assessed in Bama and 52,560 people in Dikwa by DTM teams.

The DTM programme is funded by the United States Agency for International Development (USAID) and the European Commission's Humanitarian Aid and Civil Protection department (ECHO). NEMA is also providing financial support to the programme.

1 POPULATION PROFILE

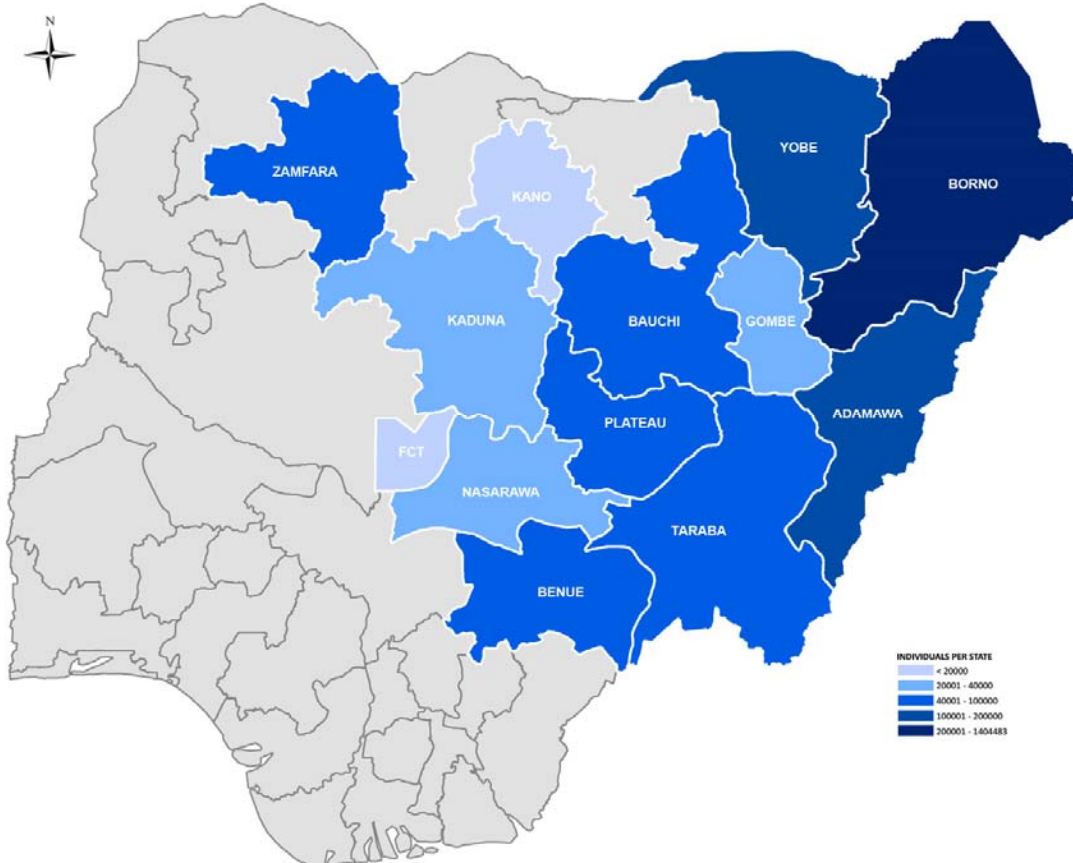
1A: LOCATION OF DISPLACEMENT

The total number of IDPs identified in Abuja FCT, Adamawa, Bauchi, Benue, Borno, Gombe, Kaduna, Kano, Nasarawa, Plateau, Taraba, Yobe and Zamfara as of 24 June 2016 is 2,066,783 IDPs (344,564 households).

| State | Households | Individuals | Avg. HH Size | Percentage |
|-------------|------------|-------------|--------------|------------|
| ADAMAWA | 38,498 | 159,445 | 4.14 | 7.71% |
| BAUCHI | 10,260 | 63,149 | 6.15 | 3.06% |
| BENUE | 9,982 | 69,206 | 6.93 | 3.35% |
| BORNO | 224,516 | 1,404,483 | 6.26 | 67.96% |
| FCT | 2,620 | 18,445 | 7.04 | 0.89% |
| GOMBE | 4,909 | 27,376 | 5.58 | 1.32% |
| KADUNA | 3,796 | 28,477 | 7.50 | 1.38% |
| KANO | 1,946 | 10,366 | 5.33 | 0.50% |
| NASARAWA | 4,031 | 26,493 | 6.57 | 1.28% |
| PLATEAU | 9,658 | 51,771 | 5.36 | 2.50% |
| TARABA | 8,193 | 46,942 | 5.73 | 2.27% |
| YOBE | 17,093 | 112,671 | 6.59 | 5.45% |
| ZAMFARA | 9,062 | 47,959 | 5.29 | 2.32% |
| Grand Total | 344,564 | 2,066,783 | 6.00 | 100.00% |

Table 1: Total IDP population by current location (State)

In total 1,676,599 IDPs have been displaced by the insurgency with the highest numbers recorded in Borno, Adamawa and Yobe states.



Map 1: Severity Map showing the population density of IDPs per state of displacement.

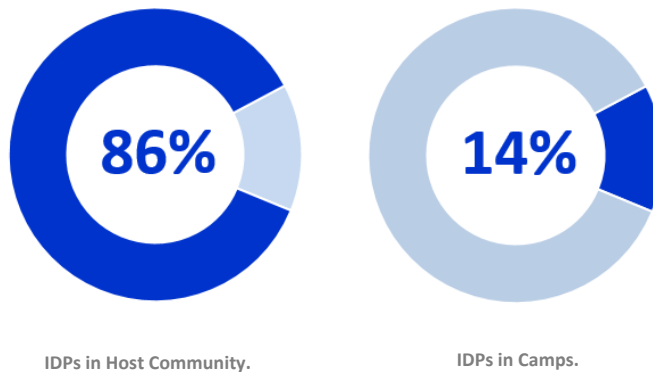


Fig 1: Percentage of IDPs in Host community and in Camps

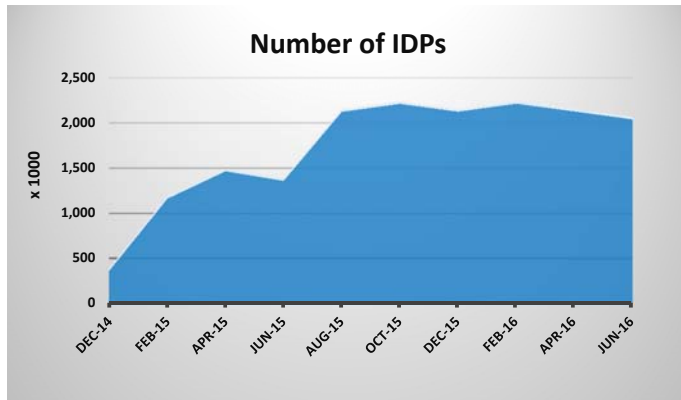


Fig 2: Number of IDPs (December 2014/June 2016)

The slight decrease in the number of IDPs compared to the last round of assessment (2,155,618 IDPs)¹ is mainly due to the fact that many IDPs returned to their LGAs of origin (Askira Uba, Damboa, Dikwa, Monguno, Kaga and Konduga) in Borno. Also one camp was closed in Damaturu in Yobe as per the request from IDPs who wanted to return to their places of origin.

In Borno, Maiduguri LGA is hosting the highest number of IDPs (693,392), while most IDPs in Adamawa and Yobe were found respectively in Michika (27,512) and Damaturu (25,338) LGAs.

| STATES | LGA | HOUSEHOLDS | INDIVIDUALS |
|---------|-----------------|------------|-------------|
| BORNO | MAIDUGURI M. C. | 110,476 | 693,392 |
| BORNO | JERE | 66,797 | 427,630 |
| BORNO | KONDUGA | 11,651 | 79,052 |
| BORNO | DIKWA | 11,252 | 56,260 |
| BORNO | BIU | 5,587 | 40,268 |
| BORNO | HAWUL | 5,229 | 35,857 |
| ADAMAWA | MICHIKA | 4,064 | 27,512 |
| ADAMAWA | GIREI | 9,887 | 27,045 |
| BORNO | BAMA | 3,477 | 25,470 |
| YOBE | DAMATURU | 3,619 | 25,338 |

Table 2: LGAs with the highest concentration of IDPs in the North East

| Round | Months of release | Number of IDPs | States covered |
|-------|-------------------|----------------|---|
| I | December '14 | 389,281 | Adamawa, Bauchi, Gombe, Taraba and Yobe |
| II | February '15 | 1,188,018 | Adamawa, Bauchi, Borno , Gombe, Taraba and Yobe |
| III | April '15 | 1,491,706 | Adamawa, Bauchi, Borno, Gombe, Taraba and Yobe |
| IV | June '15 | 1,385,298 | Adamawa, Bauchi, Borno, Gombe, Taraba and Yobe |
| V | August '15 | 2,150,451 | Abuja , Adamawa, Bauchi, Borno, Gombe, Nasarawa , Taraba and Yobe |
| VI | October '15 | 2,239,749 | Abuja , Adamawa, Bauchi, Borno, Gombe, Kaduna , Nasarawa , Plateau , Taraba and Yobe |
| VII | December '15 | 2,151,979 | Abuja, Adamawa, Bauchi, Benue , Borno, Gombe, Kaduna, Kano , Nasarawa, Plateau, Taraba, Yobe and Zamfara . |
| VIII | February '16 | 2,241,484 | Abuja, Adamawa, Bauchi, Benue, Borno, Gombe, Kaduna, Kano, Nasarawa, Plateau, Taraba Yobe and Zamfara. |
| IX | April '16 | 2,155,618 | Abuja, Adamawa, Bauchi, Benue, Borno, Gombe, Kaduna, Kano, Nasarawa, Plateau, Taraba, Yobe and Zamfara |
| X | June '16 | 2,066,783 | Abuja, Adamawa, Bauchi, Benue, Borno, Gombe, Kaduna, Kano, Nasarawa, Plateau, Taraba, Yobe and Zamfara |

Table 3: Total IDP population per round and state

¹ DTM report, Round X, June 2016

1B: DEMOGRAPHIC DATA

The demographic profile of the IDP population is the result of a sample survey conducted on 20 households in each of the wards assessed by the DTM team. In total, 22,212 households were interviewed to obtain a detailed age and sex breakdown. This sample represents 7% of the identified IDP population.

After extrapolation, the results show that 52.95% of the IDP population are female and 47.05% are male. Children under 18 constitute 55% of the IDP population and more than half of them are under five years old.

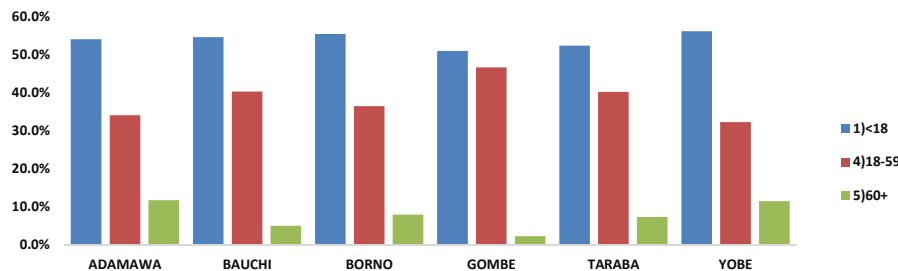


Fig 3: Demographic - Children, Adult and Aged

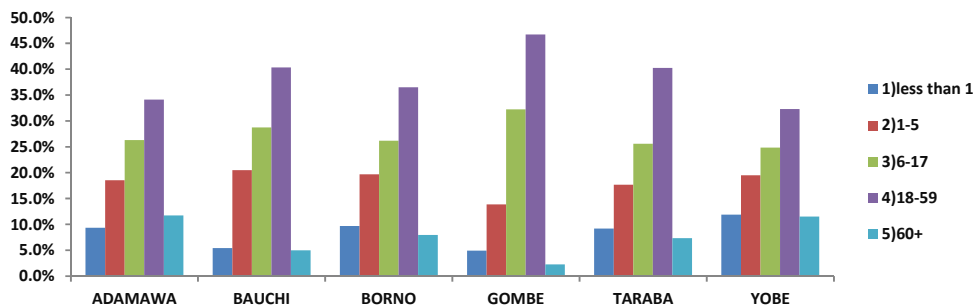
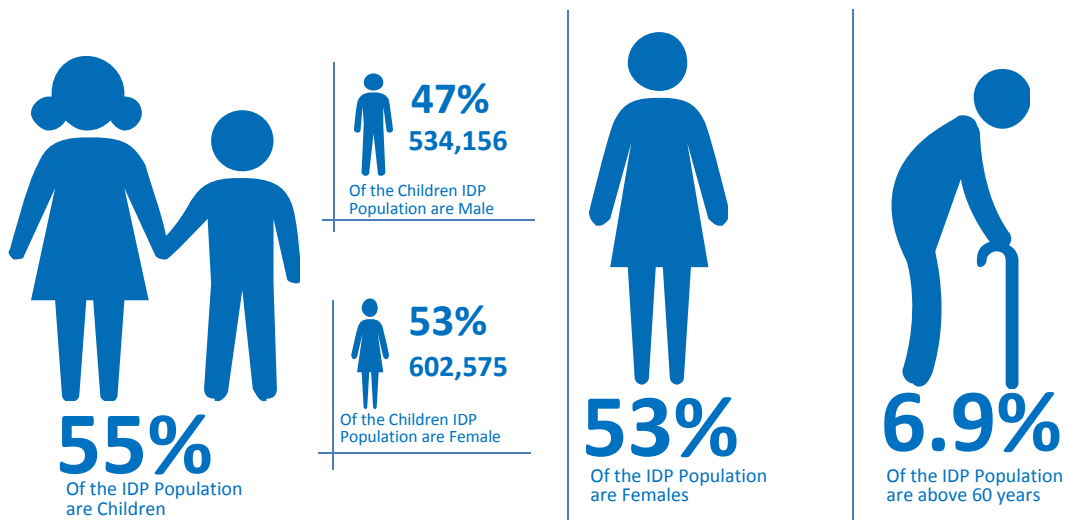
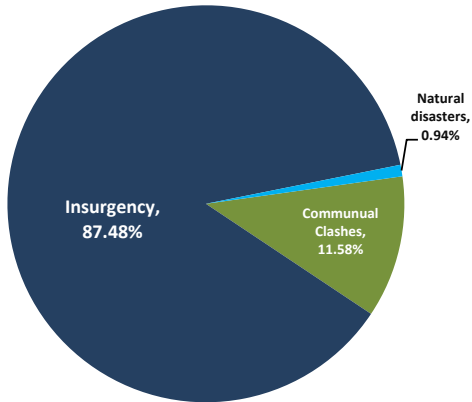


Fig 4: IDP Population by major age groups

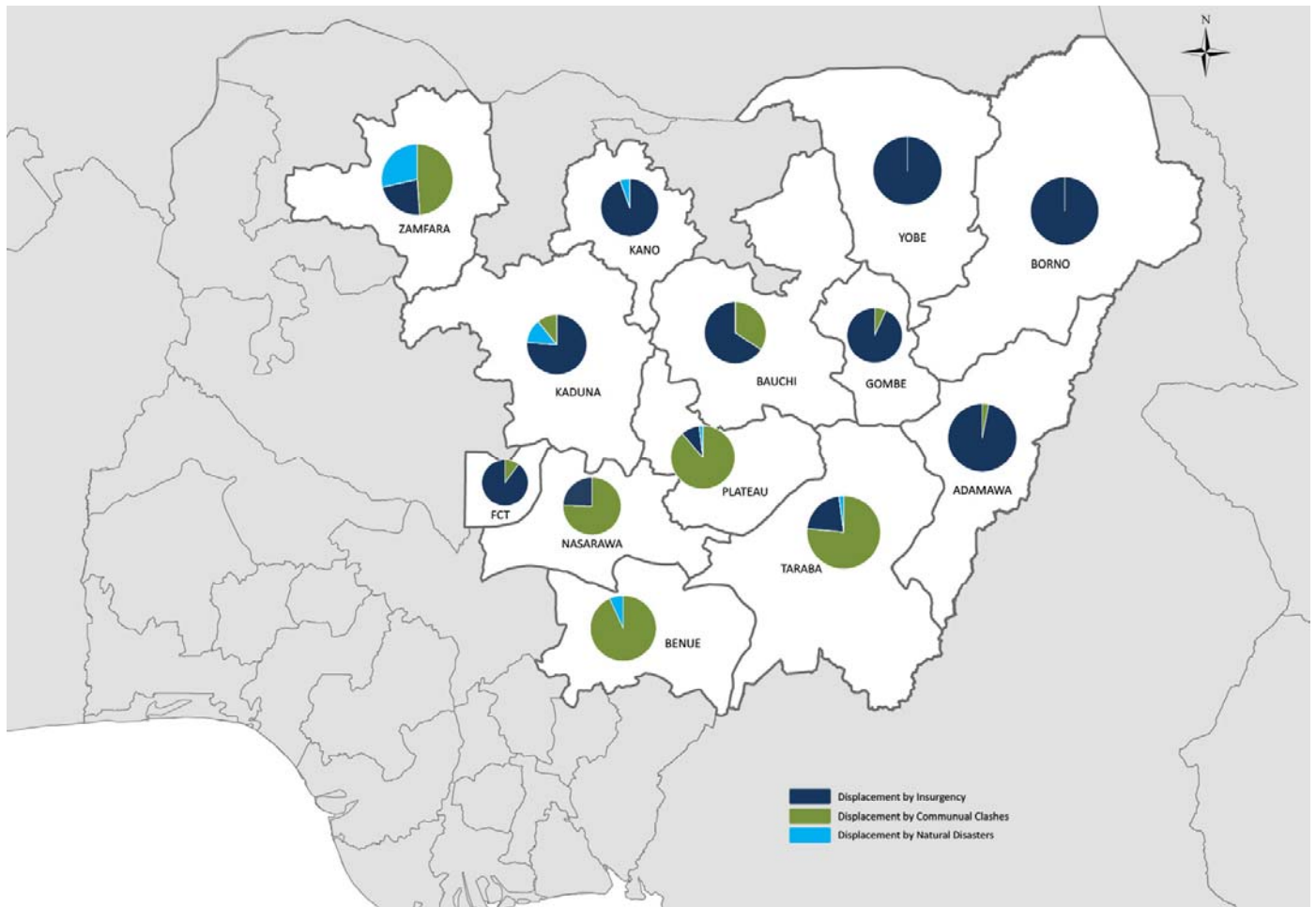
1C: REASONS OF DISPLACEMENT



Most IDPs identified through the DTM assessments were displaced because of the insurgency. This is especially the case in the North-Eastern region, where the majority of IDPs in Adamawa, Bauchi, Borno, Gombe and Yobe were displaced due to the conflict (1,767,124 IDPs). 87.48% of displacements were due to insurgency.

Communal clashes were the second highest reason for displacement (11.58%) in the areas assessed. Benue was highest with 85% recorded followed by Plateau with 69% with Taraba and Zamfara recording 72% of IDPs displaced from the same states.

Fig 5: IDP Population by reason for displacement



Map 2: IDP Population by Reasons of Displacement.

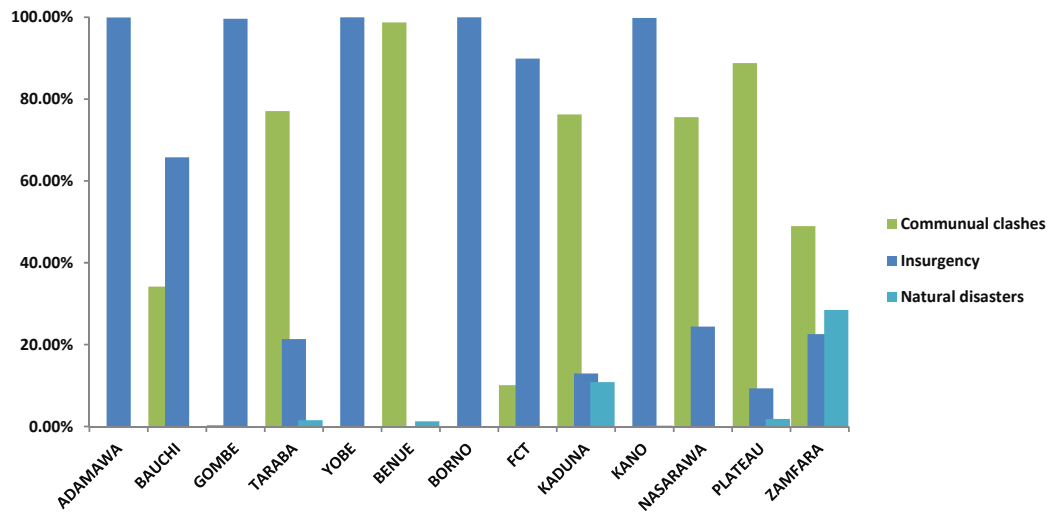


Fig 6: Total IDP Population by current location (State) and reason for displacement

1D: YEARS OF DISPLACEMENT

The majority of IDPs identified during this assessment were displaced in 2014 (50.94%), 2015 (34.3%) and so far in 2016 (6.7%)

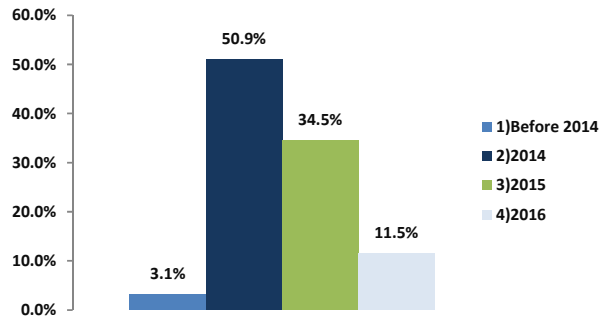


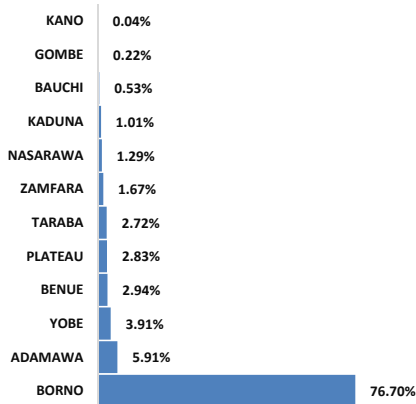
Fig 7: IDP population by year of displacement

1E: ORIGIN OF THE DISPLACED POPULATION

The majority of IDPs are displaced within their state of origin. 76.7% of the IDPs displaced in Borno originate from the state with Adamawa the second highest with 5.9% displaced.

| STATE OF ORIGIN | CURRENT LOCATION | | | | | | | | | | | | |
|-----------------|------------------|--------|--------|--------|--------|--------|--------|--------|----------|---------|--------|--------|---------|
| | ADAMAWA | BAUCHI | BENUE | BORNO | FCT | GOMBE | KADUNA | KANO | NASARAWA | PLATEAU | TARABA | YOBE | ZAMFARA |
| ADAMAWA | 70.61% | 3.56% | 0.00% | 0.11% | 0.97% | 5.13% | 0.54% | 0.17% | 0.00% | 0.81% | 7.64% | 0.00% | 0.00% |
| BAUCHI | 0.00% | 17.33% | 0.00% | 0.00% | 0.00% | 0.00% | 0.00% | 0.00% | 0.00% | 0.00% | 0.00% | 0.00% | 0.00% |
| BENUE | 0.00% | 0.00% | 85.15% | 0.00% | 9.86% | 0.00% | 0.00% | 0.00% | 0.05% | 0.00% | 0.00% | 0.00% | 0.00% |
| BORNO | 21.41% | 34.35% | 0.00% | 99.42% | 88.88% | 47.76% | 11.86% | 85.81% | 22.74% | 4.25% | 20.22% | 55.52% | 23.31% |
| FCT | 2.87% | 0.00% | 0.00% | 0.00% | 0.05% | 0.00% | 0.00% | 0.00% | 0.00% | 0.00% | 0.00% | 0.00% | 0.00% |
| GOMBE | 2.82% | 0.00% | 0.00% | 0.00% | 0.00% | 0.00% | 0.00% | 0.00% | 0.00% | 0.00% | 0.00% | 0.00% | 0.00% |
| KADUNA | 0.00% | 0.00% | 0.00% | 0.00% | 0.00% | 0.00% | 70.01% | 0.00% | 3.81% | 0.05% | 0.00% | 0.00% | 0.00% |
| KANO | 0.00% | 1.23% | 0.00% | 0.00% | 0.00% | 0.00% | 0.00% | 0.00% | 0.00% | 0.00% | 0.00% | 0.00% | 0.00% |
| KATSINA | 0.00% | 0.16% | 0.00% | 0.00% | 0.00% | 0.00% | 0.00% | 0.00% | 0.00% | 0.00% | 0.00% | 0.00% | 0.00% |
| NASARAWA | 0.00% | 2.19% | 3.12% | 0.00% | 0.24% | 0.00% | 2.47% | 0.00% | 66.36% | 9.23% | 0.00% | 0.00% | 0.00% |
| PLATEAU | 1.68% | 24.18% | 0.00% | 0.00% | 0.00% | 0.00% | 14.63% | 0.00% | 1.75% | 69.37% | 0.00% | 0.00% | 0.00% |
| TARABA | 0.60% | 6.76% | 11.73% | 0.00% | 0.00% | 0.37% | 0.00% | 0.00% | 3.47% | 15.57% | 72.14% | 0.00% | 0.00% |
| YOBE | 0.00% | 10.20% | 0.00% | 0.48% | 0.00% | 46.74% | 0.48% | 14.02% | 1.82% | 0.71% | 0.00% | 44.48% | 4.60% |
| ZAMFARA | 0.00% | 0.04% | 0.00% | 0.00% | 0.00% | 0.00% | 0.00% | 0.00% | 0.00% | 0.00% | 0.00% | 0.00% | 72.09% |

Table 4: IDP Population by state of origin and current location (State)

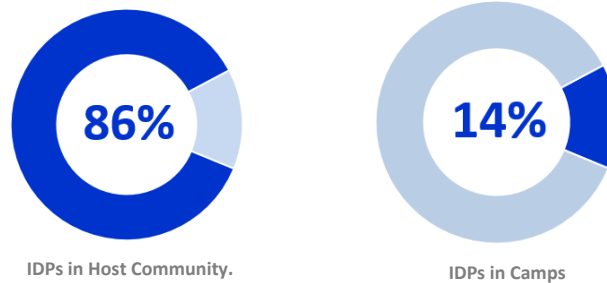


In Abuja, Bauchi, Borno, Gombe, and Kano, the majority of IDPs identified are from Borno State. In Kaduna, Nasarawa, Plateau, Yobe and Zamfara, most IDPs are from the same state.

Fig 8: Percentage of IDPs by State of Origin

1F: TYPE OF LOCATION - RESIDENCE OF IDPs

The vast majority of IDPs identified during the assessments live in host communities, with friends and relatives or in rented/donated houses. The data collected in the field indicates that 86.46% of IDPs live in host communities while 13.54% live in camps or camp-like sites.



1G: RETURNEES

A return assessment was conducted in 8 LGAs in northern Adamawa (Gombi, Hong, Madagali, Maiha, Michika, Mubi North and Mubi South) and southern Borno (Askira Uba). During this round of assessment, 663,485 returnees were identified. Most returnees were originally displaced in Adamawa (36.11%), Gombe (9.76%), and Kano (9.73%).

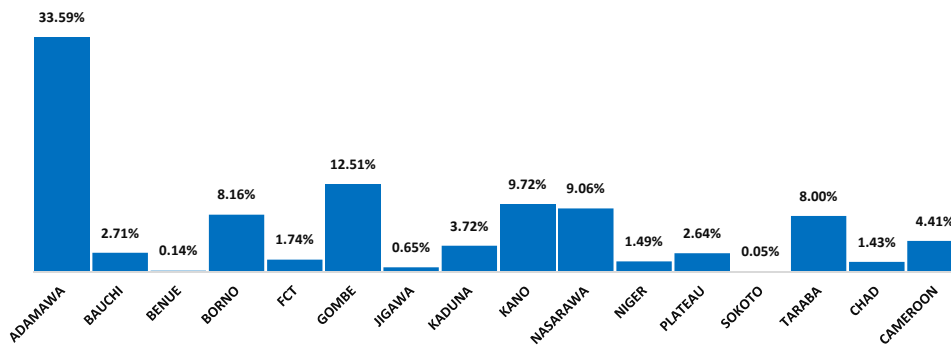
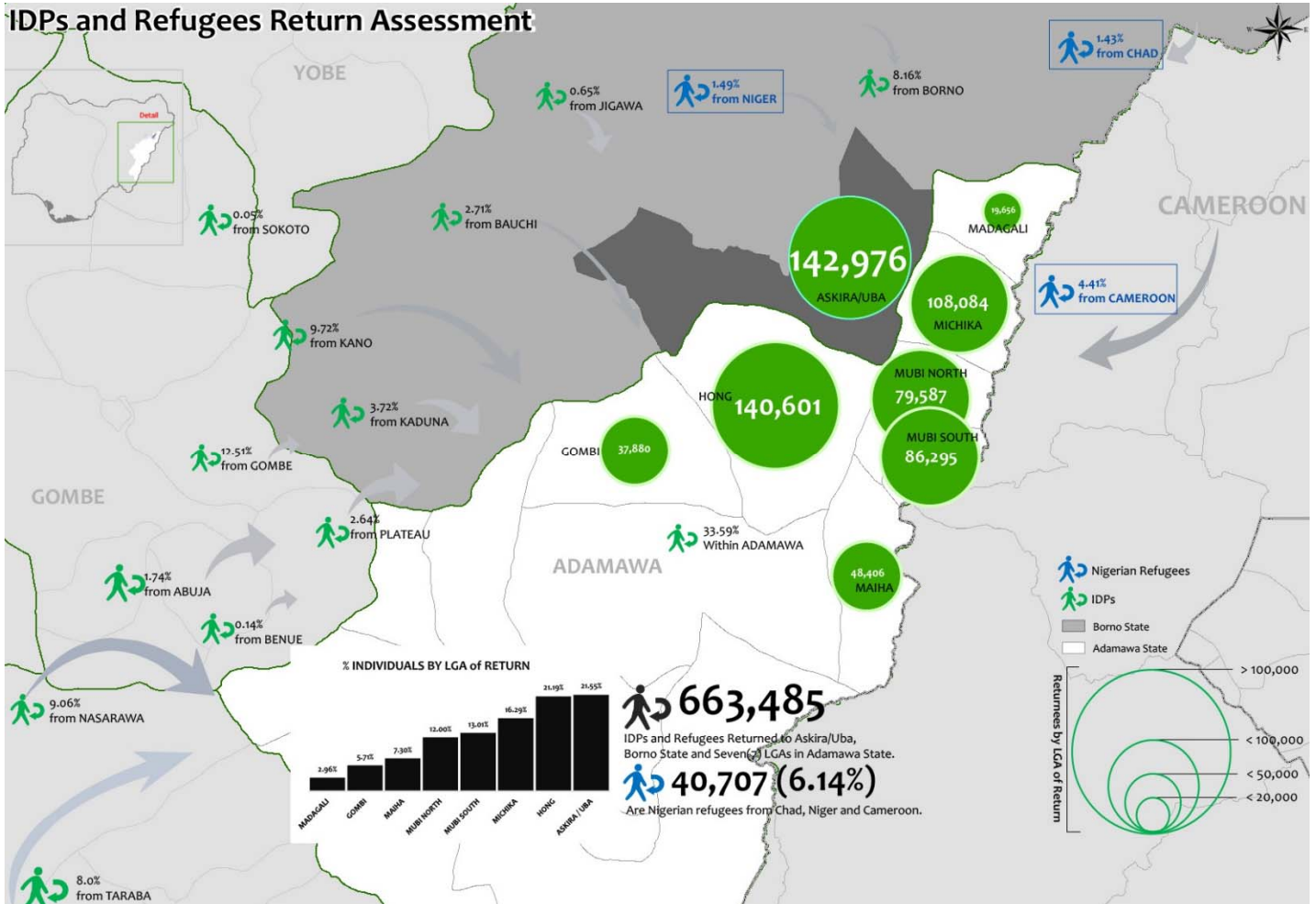


Fig 9: Percentage of Returnees by State of Displacement

IDPs and Refugees Return Assessment



Map 3: Returnees-State of origin

2 SITES ASSESSMENT

2.1. A: LOCATION AND NUMBER OF IDPs IN 106 SITES

In comparison with the last round, a total of 106 camp and camp-like sites have been visited during this round of assessment, while 75 sites have been identified in the North-East: 9 in Adamawa, 49 in Borno, 12 in Taraba and 5 in Yobe.

The number of individuals residing in these sites is 279,782 individuals (46,913 households).

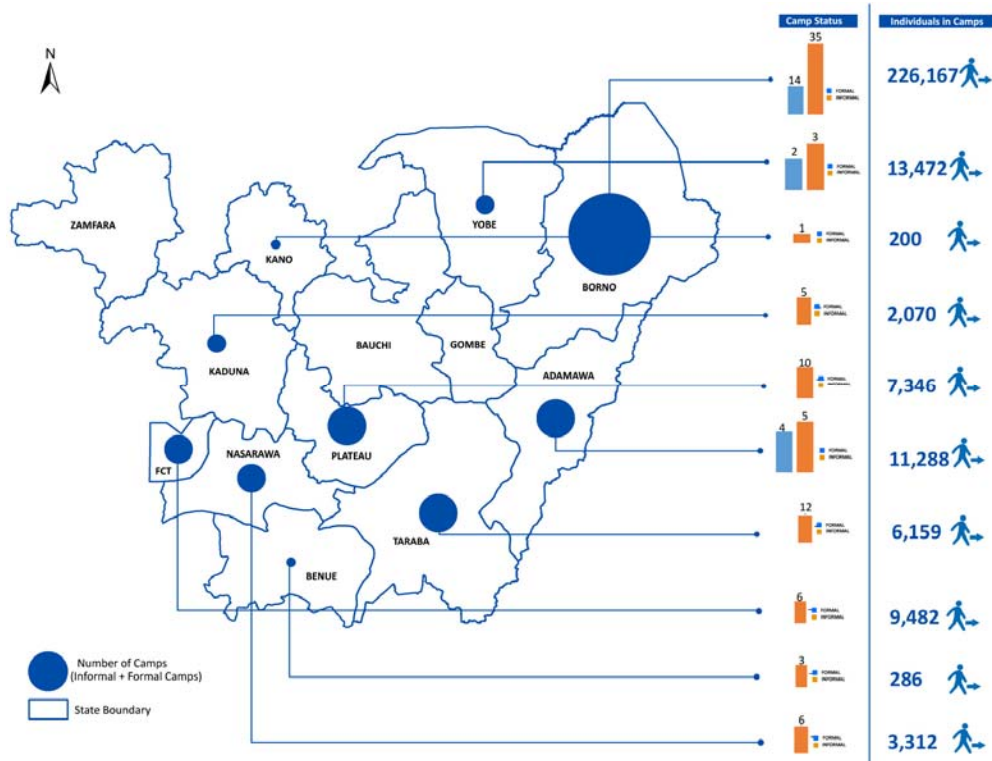
The sites assessed during this exercise have been classified in three categories:

- **Camp:** open-air settlements, usually made-up of tents, where IDPs find accommodation;
- **Collective center:** pre-existing buildings and structures used for collective and communal settlements of the displaced population;
- **Transitional center:** centers which provide short term/temporary accommodation for the displaced population.

| Site type | Number Of sites | Households (HH) | Number of individuals | Percentage of individuals |
|-----------------------|-----------------|-----------------|-----------------------|---------------------------|
| Camp | 27 | 8,483 | 49,332 | 17.6% |
| Collective Settlement | 78 | 38,416 | 230,361 | 82.3% |
| Transitional Centre | 1 | 14 | 89 | 0.0% |
| Total | 106 | 46913 | 279782 | 100% |

The majority of sites are categorized as collective settlements (78 sites) and are mostly schools (21 sites) and Government buildings (22 sites) and self-made tents (22 sites).

Table 5: Number of sites - State



Map 4: Number of sites - State

2.1. B: SECTOR ANALYSIS



SHELTER

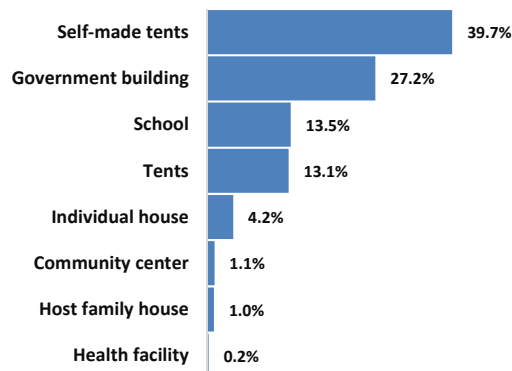


Fig 10: Percentage of Shelter Types

The most common types of shelter identified during the site assessments were classified as informal settlements. Out of the 106 sites assessed in the North-East, 55 are not officially recognized which constitutes 51.8% of the total camps in the North-East.

The most common types of shelter identified are government buildings (22 sites) and self-made tents (22 sites majorly in informal sites). In majority of sites (53), more than 75% of IDP population live indoors.

In 44 sites residents reported blankets as the most needed type of NFI.



WASH

In the majority of sites (69) the main water source is located on-site within a 10 minute walk. In 15 sites, the main water source is located off-site within a 10 minute walk. In 21 sites the water sources are located off-site and requires more than a 10 minute walk.

At 39 sites hand pump is the main source of drinking water. At 39 sites piped water supply provide the main source. In 74 sites the drinking water is reported to be potable. In 32 sites, there were complaints of unpleasant water taste.

At 78 sites, the latrines were assessed as "not so good conditions". In 47 sites, there are separated toilets for males and females. In 64 sites, toilets do not have a locker. In most sites (48) burning is the main method of garbage disposal. 97% of sites have hand washing stations but 56% of them have no soap or water. At the majority of sites (78), there was no evidence of hand washing practices. At 74 sites, there were evidences of open field defecation and 86 sites do not have working drainage system.



FOOD AND NUTRITION

Of the 106 sites accessed, 80 sites had access to food. The provision of food, however, is irregular in 56 sites. The most common source of food is food distribution this carried out in 34 sites. Screening for malnutrition was conducted at 27 sites.



HEALTH

In the majority of sites (53), residents reported malaria as the most prevalent health problem. Residents in 74 sites reported to have access to health facilities. In 41 sites the health facilities are located on site – less than 3 kilometers away – and in 18 sites the health facilities are located off site –more than 3 kilometers away.



EDUCATION

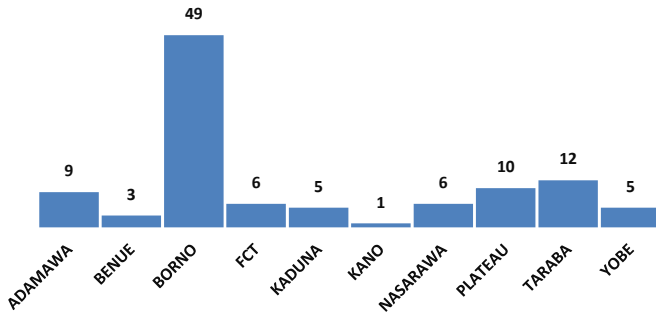


Fig 11: % of children attending school

In 106 sites accessed, 67 had facilities for formal or informal education. In the majority of sites where education is available (43), the nearest education facilities are located on site. In 55 sites, education facility is located within one kilometer distance. In 35 sites none of the children attend school while in 24 sites less than 25% of children attend school. In 18 sites, the number of students who attend school is less than 50% of the children and this percentage increases to less than 75% in 14 sites.



PROTECTION

Incidents were identified in 83 sites out of all the sites assessed and mostly classified as due to theft (11 sites) and alcohol and drug related (9 sites). Efforts are currently ongoing to better assess other kind of incidents and most particularly GBV cases.



COMMUNICATION

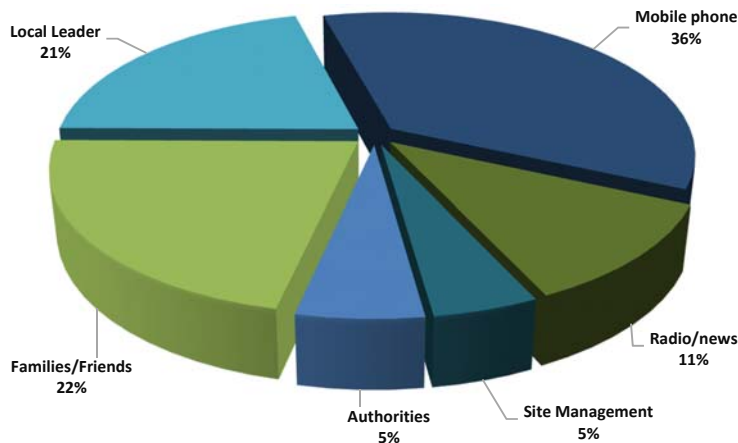


Fig 12: Means of Communication

In 38 sites, resident get information from mobile phones. Family and friends were the second best source of information at 22%. At 43 sites required more information about safety and security whereas residents in 32 sites, residents require more information about the situation in their areas of origin.



LIVELIHOOD

In 49 sites farming is the main occupation of the IDPs. Residents, however, do not have access to land for cultivation in 54 sites. At 60 sites, residents have access to income generating activities but mostly on an irregular basis.



3 METHODOLOGY

The DTM activities are being implemented according to the methodology endorsed by the Government of Nigeria and carried out by teams composed of members of the National Emergency Management Agency (NEMA), the State Emergency Management Agency (SEMA), the Nigerian Red Cross Society and IOM. Humanitarian partners on the field are also participating in the assessment on an ad hoc basis. Data are collected following the below steps:

Local Government area (LGA) level location assessment:

An assessment is conducted with key informants at the LGA level. The type of information collected at this level includes: displaced population estimates including household and individual level estimates, the identification of wards within the LGA with displaced populations and the type of displacement locations, reason for displacement, time of arrival of IDPs, and location of origin. The assessment also captures if IDPs have originated from the LGA and records contacts of key informants and organizations assisting IDPs in the area. The information is collected via interviews with key informants, who can be representatives of the LGA administration, IDP community leaders, religious leaders, Ward leaders, and NGO or humanitarian aid workers. The results of the LGA assessments, most importantly the indication of the presence of displaced households in specified wards/villages, disaggregated by those displaced in host communities and those displaced in camp-like settings, are utilized to advise whether to continue assessments at the ward/village level.

Ward/village level location assessments:

Assessments are conducted with key informants at the ward/village level. The information collected includes: estimates on the number of displaced households and individuals living in the ward, details on the location and type of residence of displaced households (host community – free or renting, camp-like settings – formal and informal), reason for displacement, areas of origin, and length of displacement. The assessment also includes information on displacement originating from the ward, as well as a demographic calculator based on a sample of IDPs in host communities and camp-like settings. Interviews are conducted with key informants, such as Ward leaders, representatives of the LGA administration, IDP community leaders, religious leaders, and NGO or humanitarian aid workers. The results of the ward/village assessments are used to verify the information collected at LGA level. The ward/village level location assessments are carried out in all those wards identified as having IDP populations during the LGA assessment.

Site assessments

The site assessments are undertaken in identified IDP sites (both camps and camp-like settings) as well as in host communities to capture detailed information on the key services available. Site assessment forms are utilized to record the exact location and name of a site/location, accessibility constraints, size and type of the site/location, whether registrations is available, details about the site management agency (in camps and camp-like sites) and if natural hazards put the site/location at risk. The form also captures details about the IDP population, including their place of origin, and demographic information on the number of households with a breakdown by age and sex, as well as information on IDPs with specific vulnerabilities. The form furthermore captures details on key access to services in different sectors: shelter and NFI, WASH, food, nutrition, health, education, livelihood, communication, and protection. The information is captured through interviews with representatives of the site management agency and other key informants, including IDP representatives.

Registration:

The registration exercise consists in establishing the profile of IDPs by collecting detailed information at household level. The data is captured through an individual interview with the head of household and include information on individual household members, displacement history, education, livelihood, return intention, assistance received and needs as well as on vulnerability. This exercise is conducted in camps, camp like sites and host communities.

Contacts:

NEMA: Alhassan Nuhu, Director, Disaster Risk Reduction, alhassannuhu@yahoo.com +234 8035925885

IOM: Henry KWENIN, Project Officer, hkwenin@iom.int +234 9038852524

<http://nigeria.iom.int/dtm>