

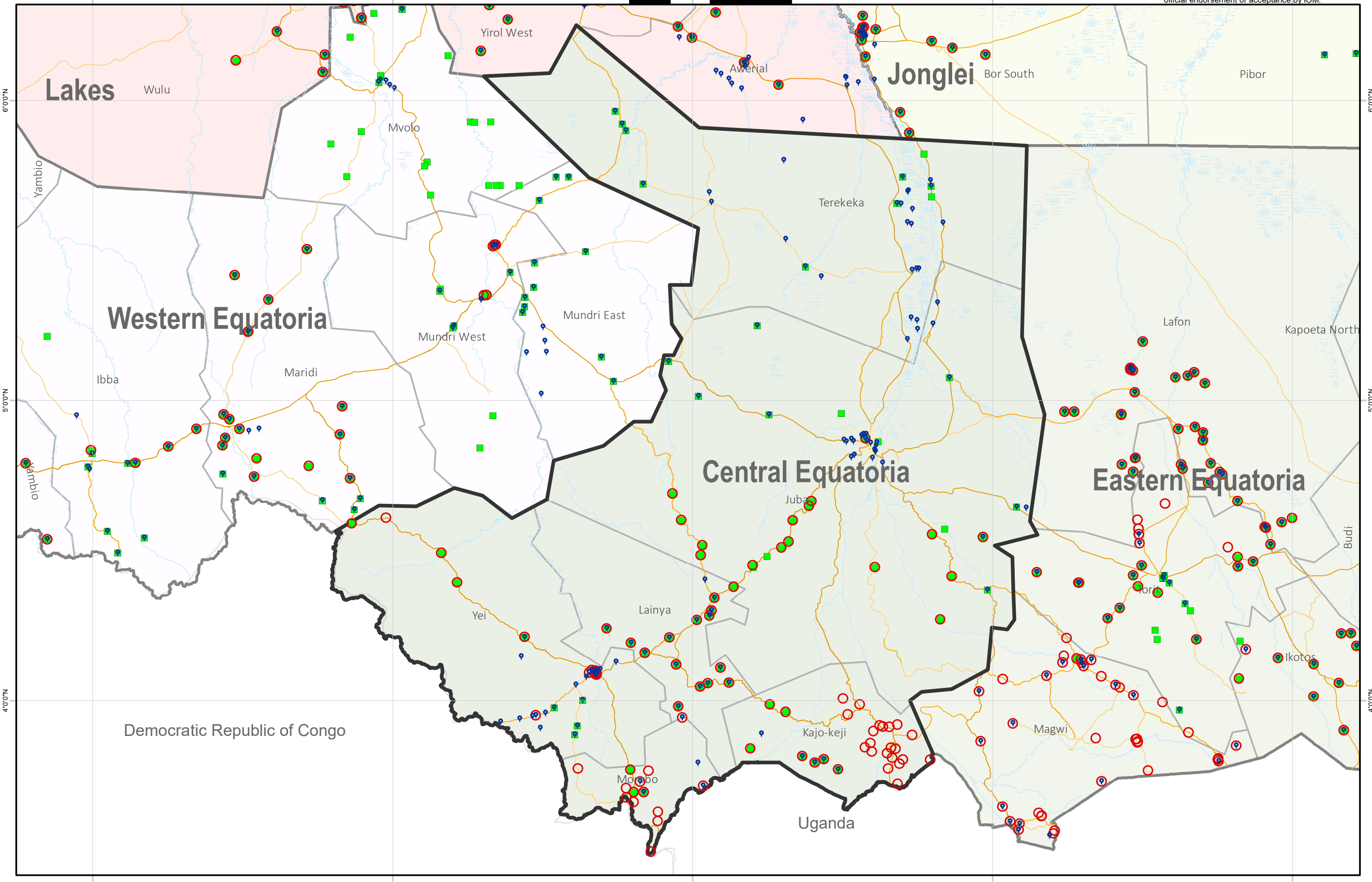
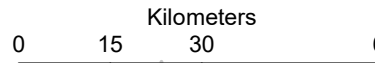
- Locations of returnee individuals (previously displaced abroad)
- Locations of returnee individuals (previously displaced only in South Sudan)
- Locations of IDP individuals present at time of assessment

- Roads**
- Primary
 - Secondary
 - Tertiary
 - Local/Urban

- Rivers
- - - Marshland
- State
- County

Payam - Sub Area name
Village - Location name

Disclaimer: This map is for illustration purposes only. Names and boundaries on this map do not imply official endorsement or acceptance by IOM.



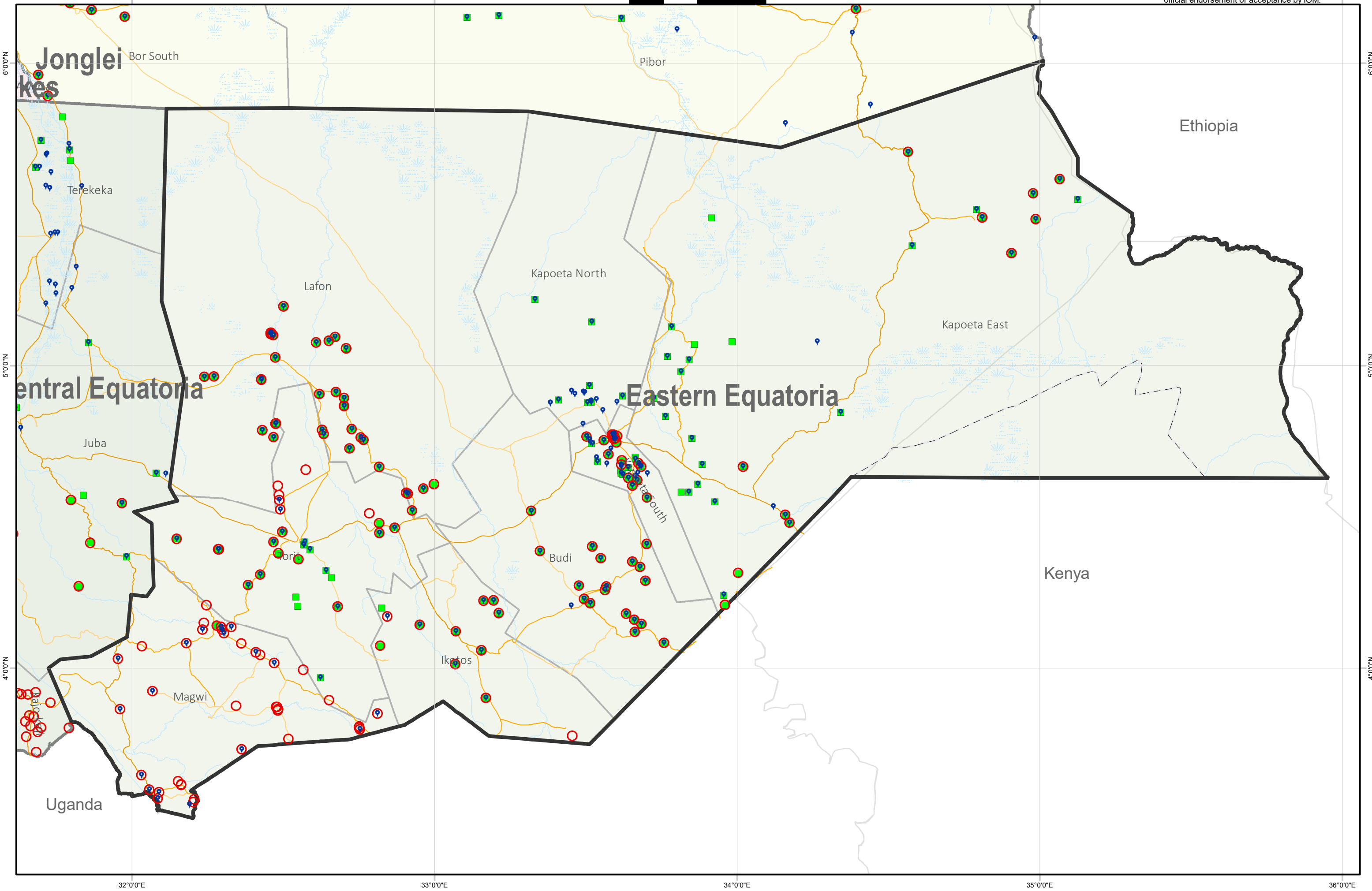
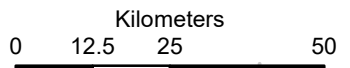
- Locations of returnee individuals (previously displaced abroad)
- Locations of returnee individuals (previously displaced only in South Sudan)
- 📍 Locations of IDP individuals present at time of assessment

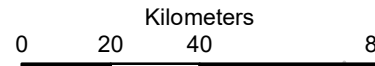
- Roads**
- Primary
 - Secondary
 - Tertiary
 - Local/Urban

- Rivers
- - - Marshland
- State
- County

Payam - Sub Area name
Village - Location name

Disclaimer: This map is for illustration purposes only. Names and boundaries on this map do not imply official endorsement or acceptance by IOM.





- Locations of returnee individuals (previously displaced abroad)
- Locations of returnee individuals (previously displaced only in South Sudan)
- Locations of IDP individuals present at time of assessment

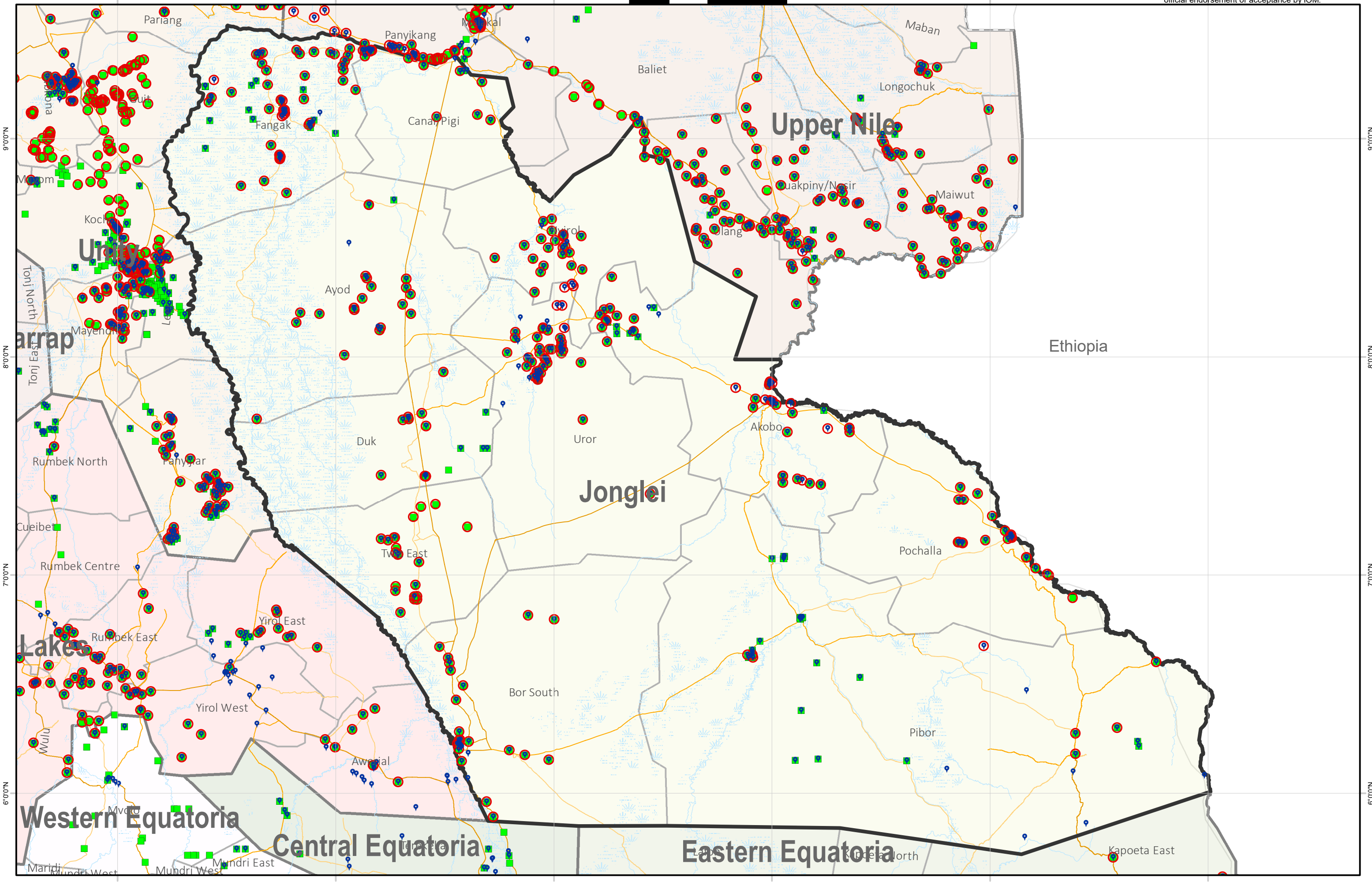
- Roads**
- Primary
 - Secondary
 - Tertiary
 - Local/Urban

- Rivers
- - - Marshland

- State
- County

Payam - Sub Area name
Village - Location name

Disclaimer: This map is for illustration purposes only. Names and boundaries on this map do not imply official endorsement or acceptance by IOM.



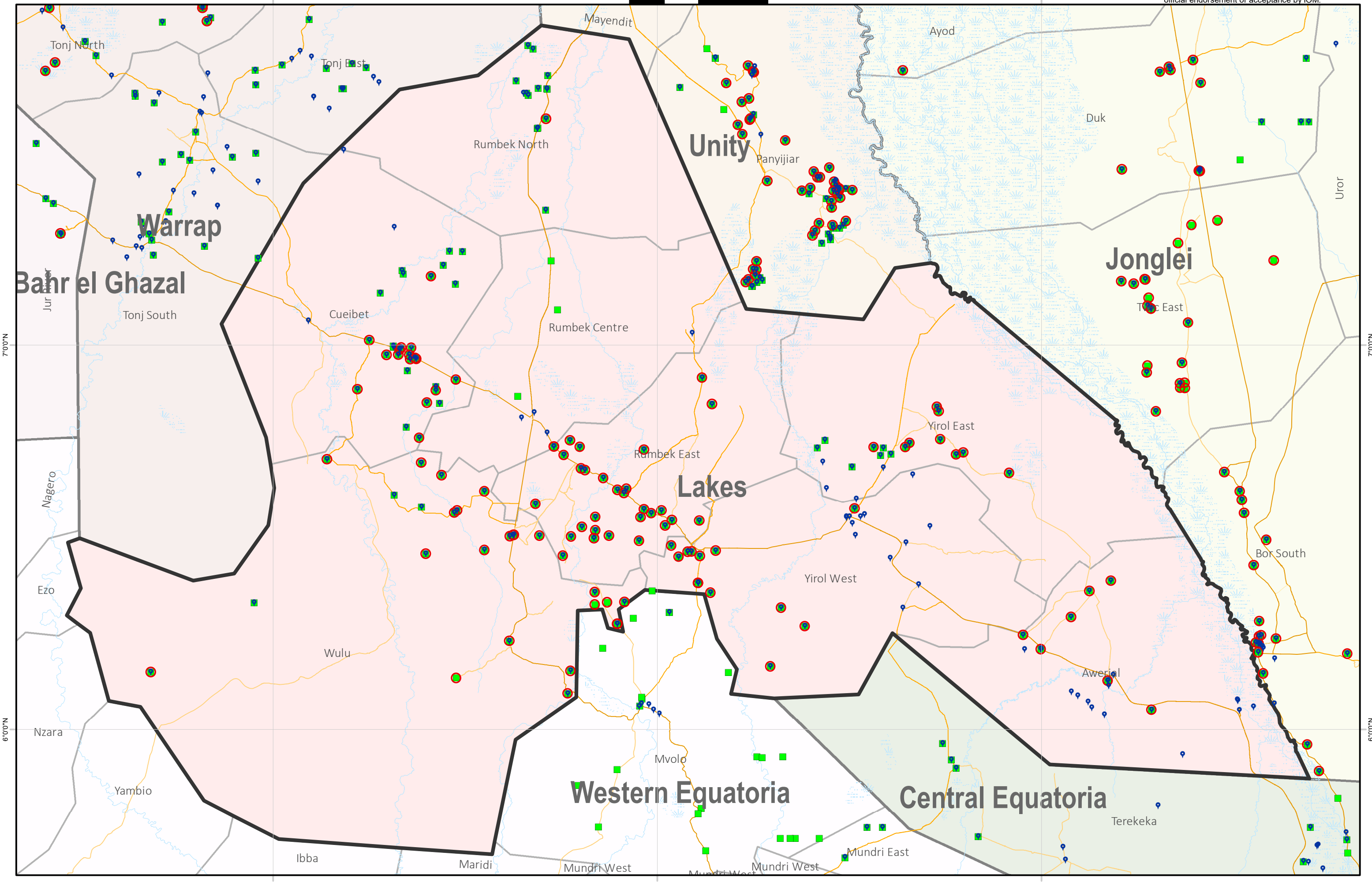
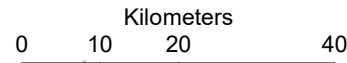
- Locations of returnee individuals (previously displaced abroad)
- Locations of returnee individuals (previously displaced only in South Sudan)
- 📍 Locations of IDP individuals present at time of assessment

- Roads**
- Primary
 - Secondary
 - Tertiary
 - Local/Urban

- State
- County

Payam - Sub Area name
Village - Location name

Disclaimer: This map is for illustration purposes only. Names and boundaries on this map do not imply official endorsement or acceptance by IOM.



7°00'N

6°00'N

7°00'N

6°00'N

29°0'0"E

30°0'0"E

31°0'0"E

IDPs and Returnees locations in Northern Bahr el Ghazal state as of September 2020

Displacement Tracking Matrix Mobility Tracking Round 9

0 10 20 40
Kilometers

- Locations of returnee individuals (previously displaced abroad)
- Locations of returnee individuals (previously displaced only in South Sudan)
- 📍 Locations of IDP individuals present at time of assessment

Roads

- Primary
- Secondary
- Tertiary
- Local/Urban

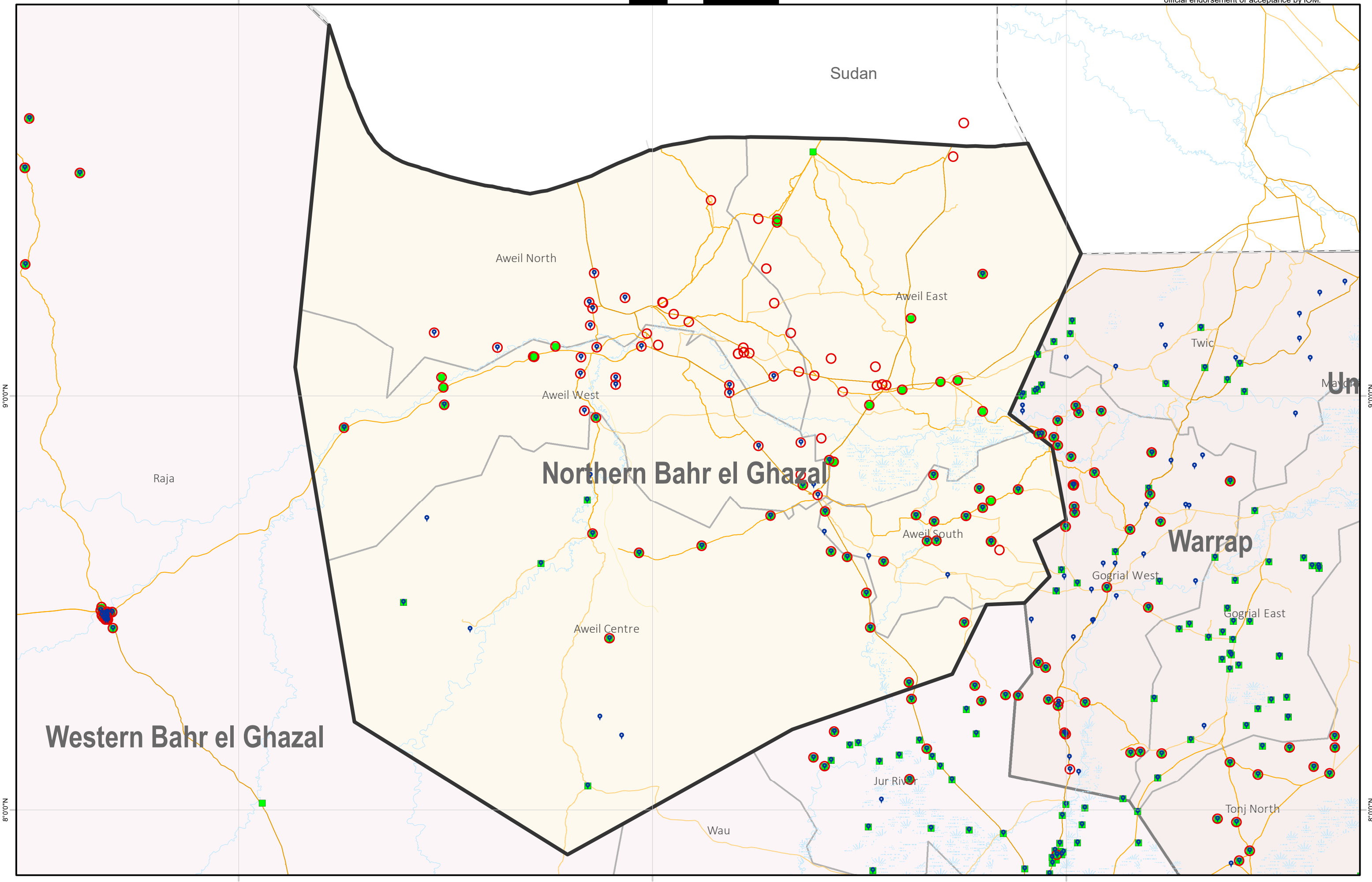
- Rivers
- - - Marshland

- State
- County

Payam - Sub Area name

Village - Location name

Disclaimer: This map is for illustration purposes only. Names and boundaries on this map do not imply official endorsement or acceptance by IOM.



- Locations of returnee individuals (previously displaced abroad)
- Locations of returnee individuals (previously displaced only in South Sudan)
- Locations of IDP individuals present at time of assessment

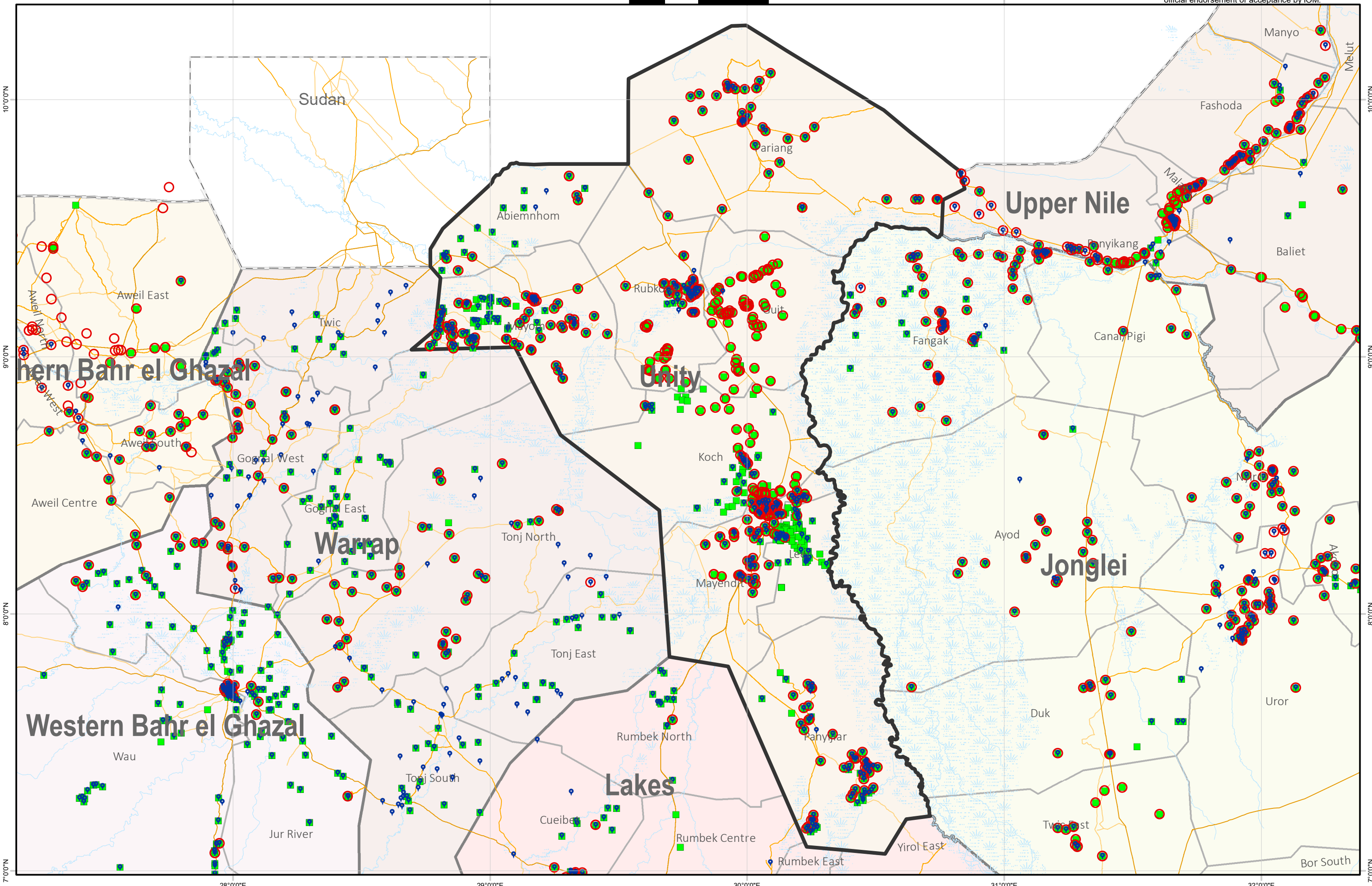
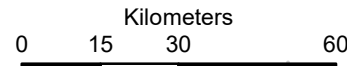
- Roads**
- Primary
 - Secondary
 - Tertiary
 - Local/Urban

- Rivers
- - - Marshland

- State
- County

Payam - Sub Area name
Village - Location name

Disclaimer: This map is for illustration purposes only. Names and boundaries on this map do not imply official endorsement or acceptance by IOM.



- Locations of returnee individuals (previously displaced abroad)
- Locations of returnee individuals (previously displaced only in South Sudan)
- 📍 Locations of IDP individuals present at time of assessment

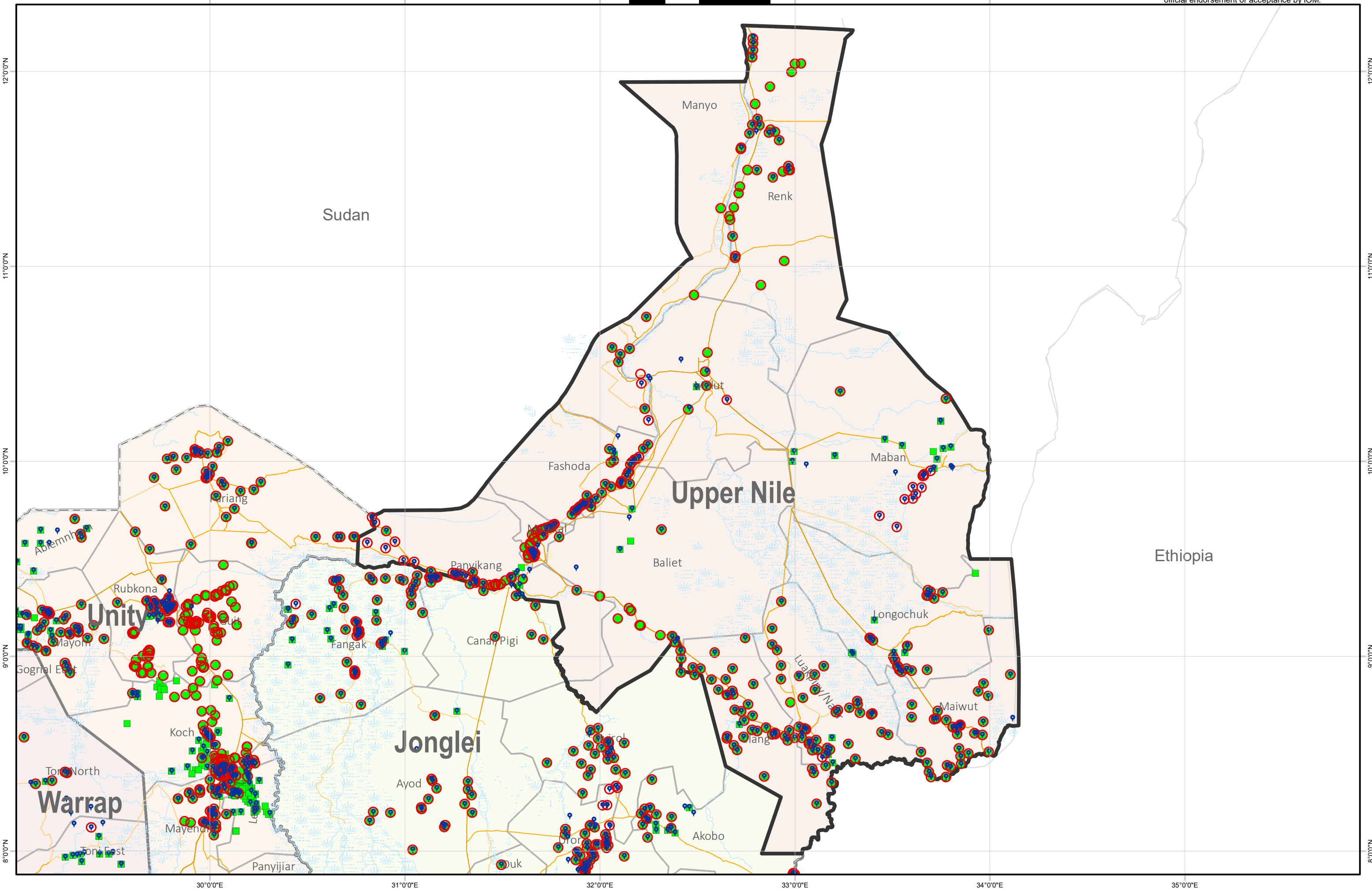
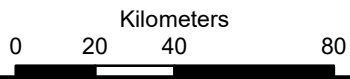
- Roads**
- Primary
 - Secondary
 - Tertiary
 - Local/Urban

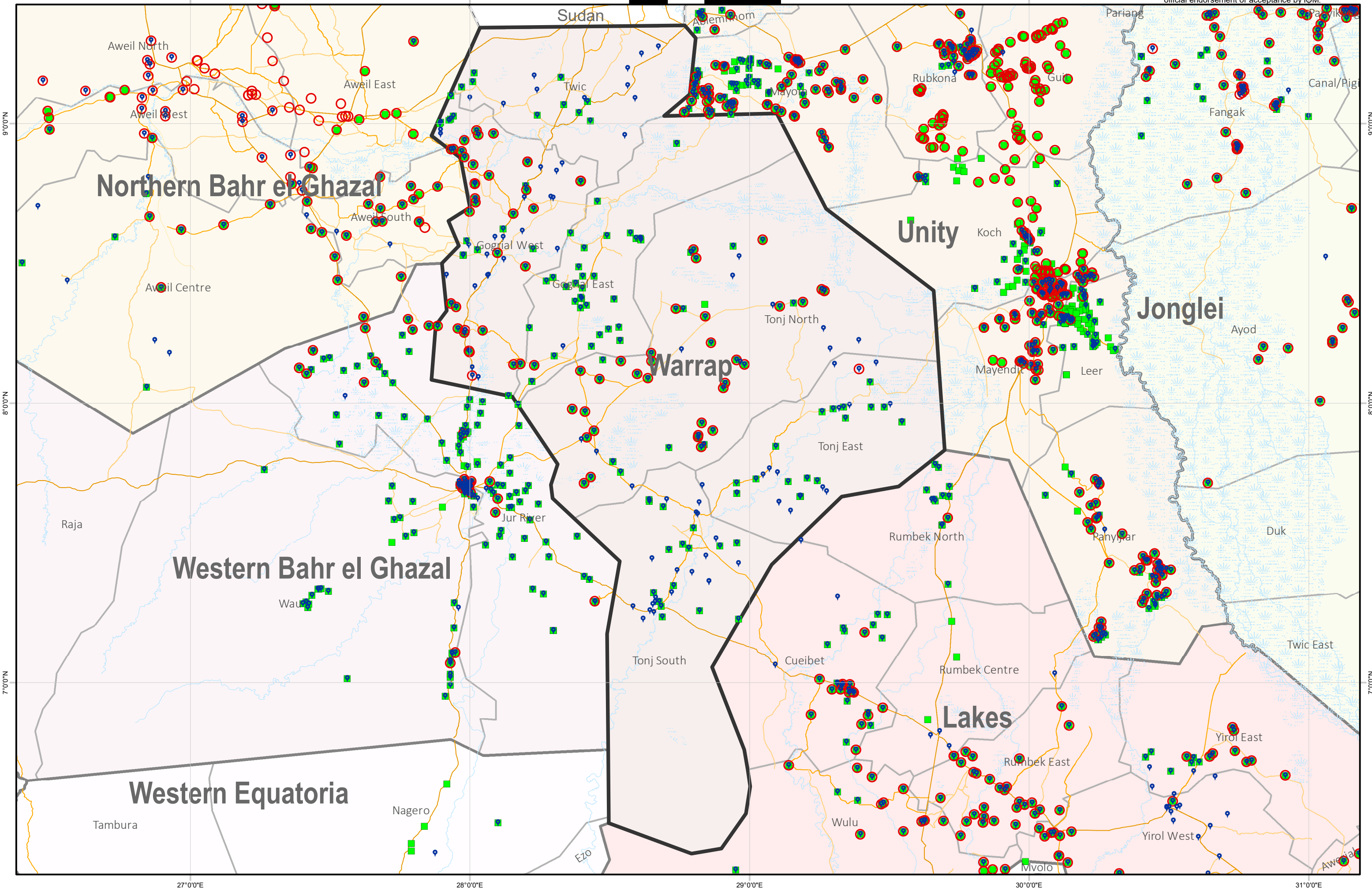
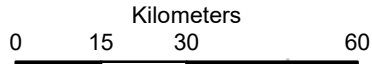
- Rivers
- - - Marshland

- State
- County

Payam - Sub Area name
Village - Location name

Disclaimer: This map is for illustration purposes only. Names and boundaries on this map do not imply official endorsement or acceptance by IOM.





0 20 40 80
Kilometers

- Locations of returnee individuals (previously displaced abroad)
- Locations of returnee individuals (previously displaced only in South Sudan)
- 📍 Locations of IDP individuals present at time of assessment

Roads

- Primary
- Secondary
- Tertiary
- Local/Urban

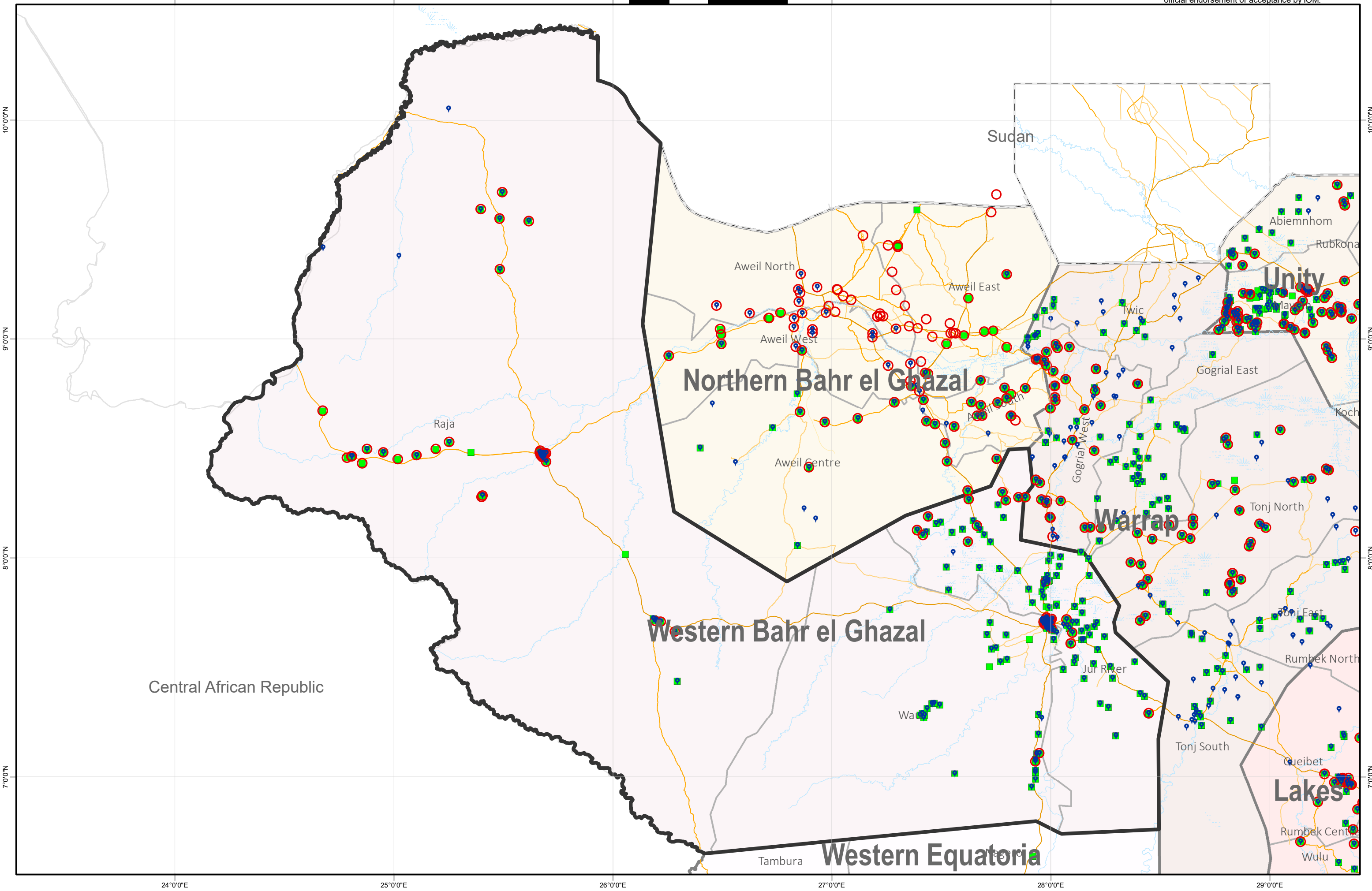
- Rivers
- - - Marshland

- State
- County

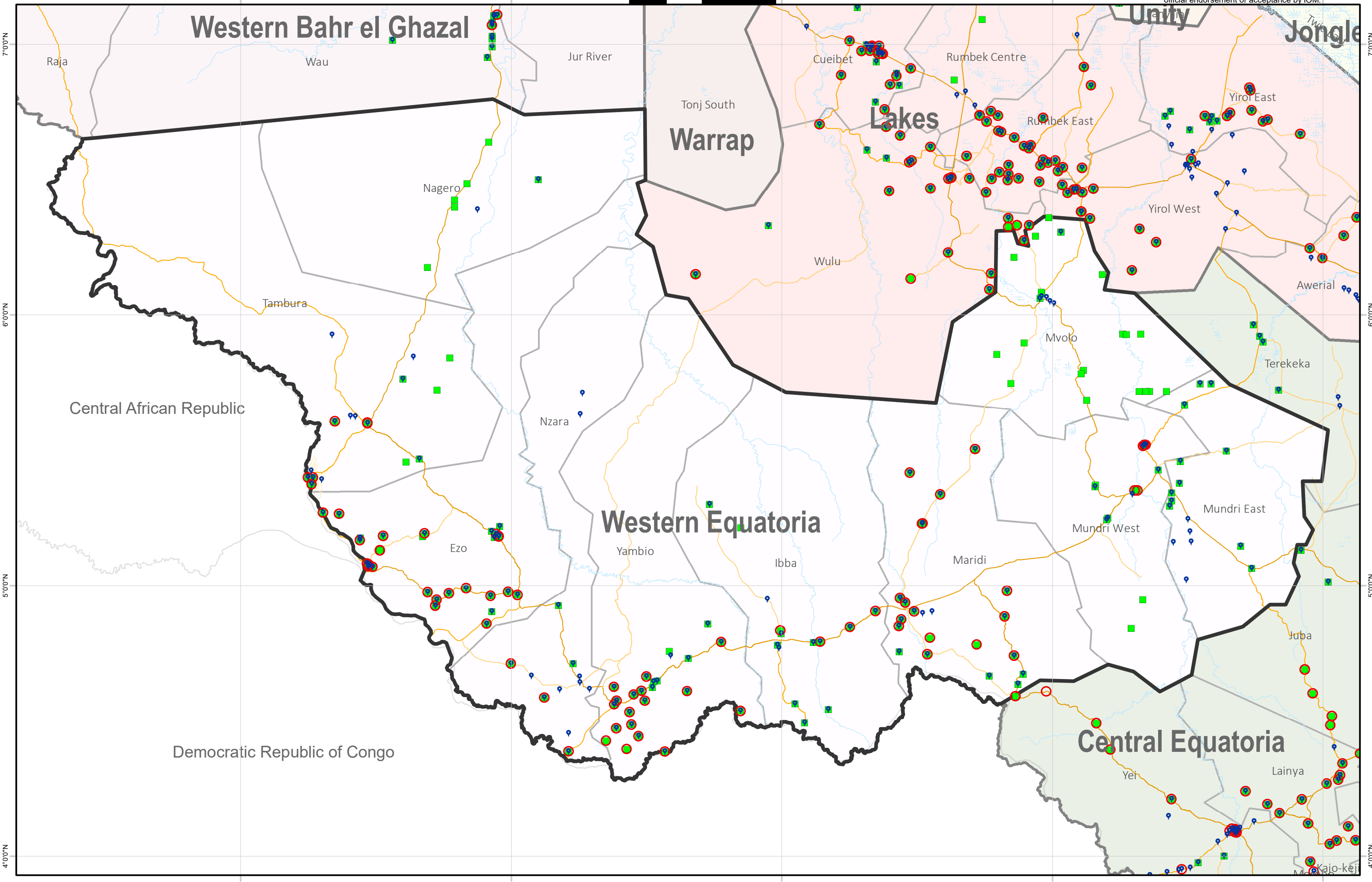
Payam - Sub Area name

Village - Location name

Disclaimer: This map is for illustration purposes only. Names and boundaries on this map do not imply official endorsement or acceptance by IOM.



Kilometers
0 15 30 60



7°00'N
6°00'N
5°00'N
4°00'N

7°00'N
6°00'N
5°00'N
4°00'N

27°00'E 28°00'E 29°00'E 30°00'E 31°00'E