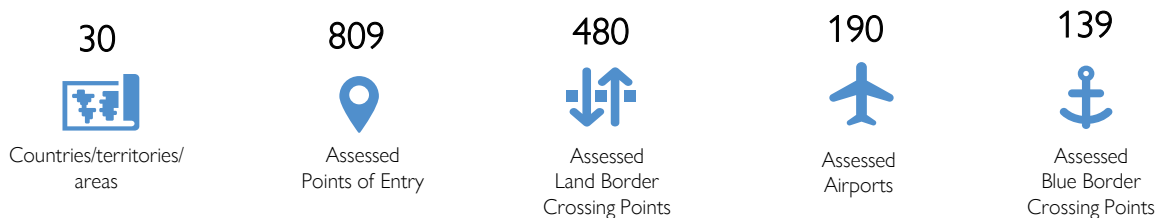


COVID-19 Mobility Tracking Impact – Points of Entry Analysis

January 27, 2021 – IOM Regional Office for the European Economic Area, the European Union and NATO

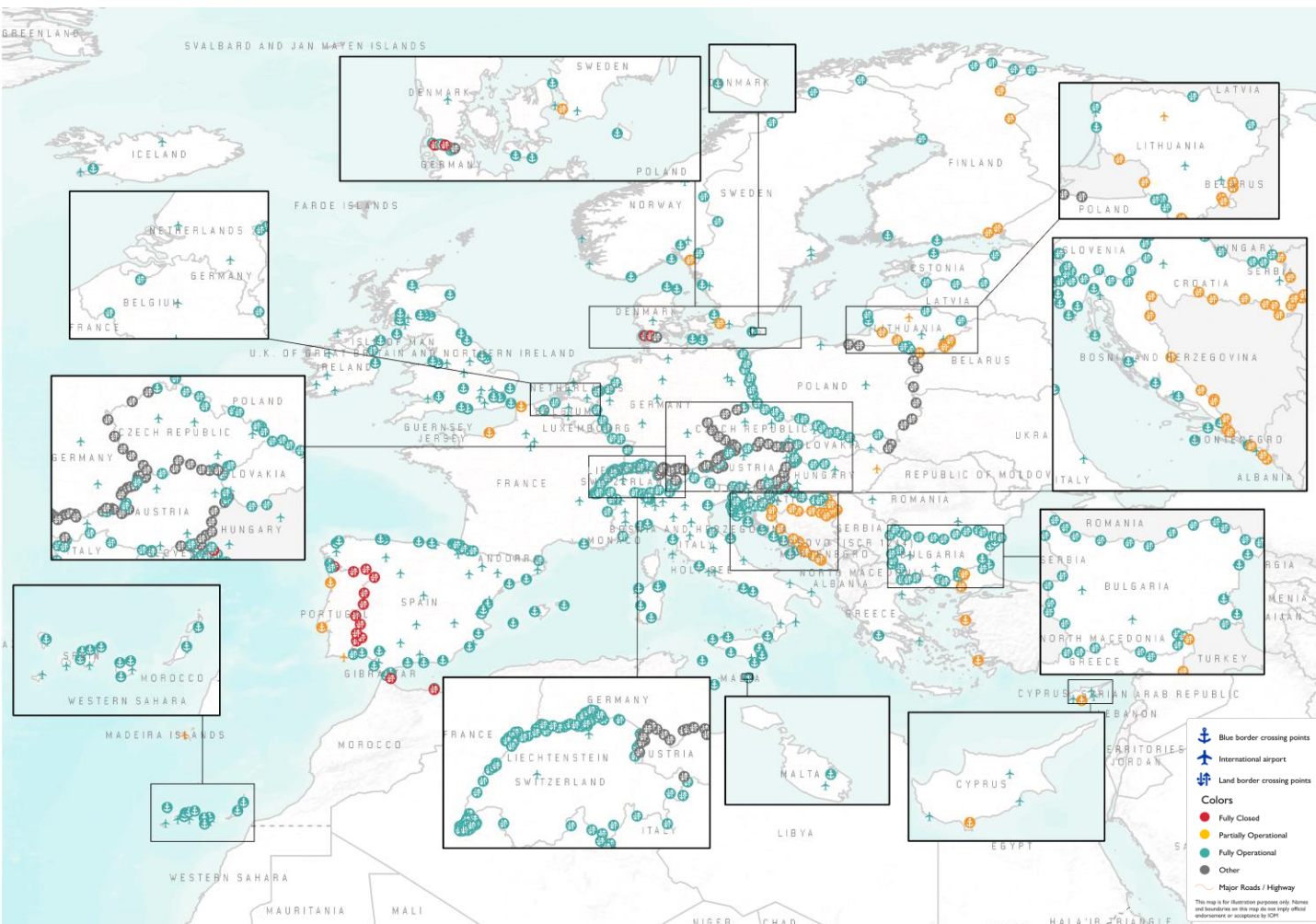
The outbreak of the COVID-19 virus has affected global and regional human mobility in the form of various travel disruptions and restrictions. The total number of COVID-19 cases reached 22,765,857 in the European Economic Area region (EEA) as of 31 January 2021 according to the World Health Organization (WHO). To better understand how the pandemic affects mobility at the Points of Entry (PoEs), the International Organization for Migration (IOM) has developed an online tool and database which tracks changes in mobility at Points of Entry (airports, land and blue border crossing points). This includes preparedness and response measures to prevent, protect against, control and assist in line with the International Health Regulations (IHR). Among the mobility changes tracked by IOM are: 1) Movement restrictions on entry and/or exit, 2) Changes in visa requirements, 3) Restrictions applied to certain nationalities to disembark at this location, 4) Changes in identification documents needed to disembark, 5) Medical measures in place such as Health Staffing/Medical Personnel, Standard Operating Procedures (SOPs), Risk Communication and Community Engagement (RCCE), Infection prevention and control (IPC) and Surveillance and Referral.

As of 27 January 2021, data was collected on 809 PoEs in 30 countries/territories/areas across the EEA region. These locations include: 480 land border crossings points, 190 airports, and 139 blue border crossing points (including sea, river and lake ports). This work is based on the information collected by or available to IOM Country Offices in the region. This PoEs brief analysis provides an overview of the changes of the operational status and mobility restrictions over the past year, between April 2020 and January 2021. Not all data on PoEs have been updated every month, meaning that the displayed trend does not necessarily represent the situation of all PoEs at any given month. A total of 809 PoEs have been assessed as of January 2021, which is 45 more than the 764 PoEs assessed in April last year when the global data collection exercise was rolled out.¹



1. The change in the number of assessed PoEs can be due to limited information at any given month, or by assessing a PoE redundant relative to international mobility.

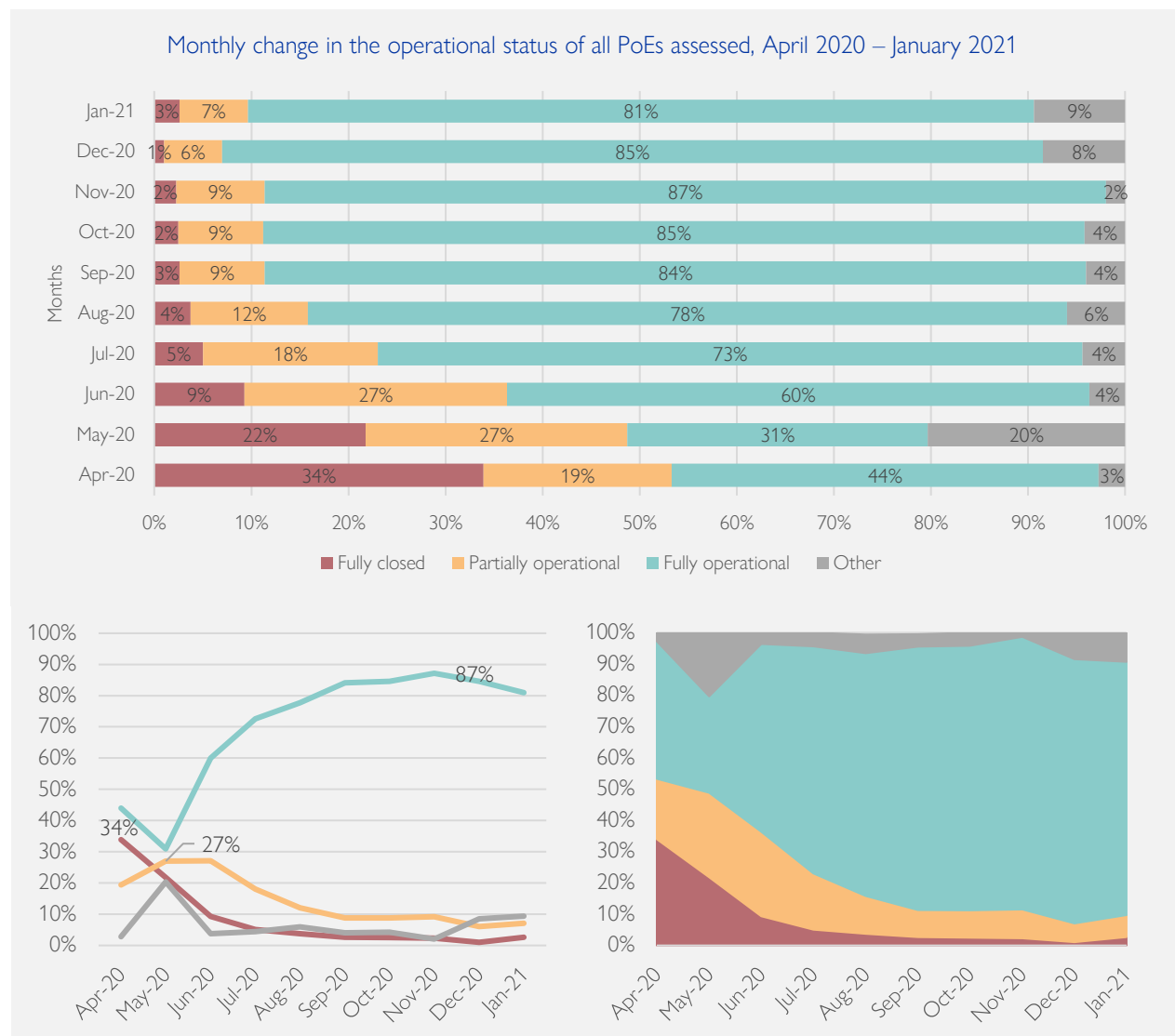
Overview of assessed international airports, land border crossing points and blue border crossing points in the EEA region



Changes in operational status over time: April 2020 – January 2021

There have been changes in the number of travel restrictions worldwide since April, which are reflected in the operational status of the PoEs and restriction measures in place at the assessed locations. The information on the operational status of PoEs is collected according to the following classification: (1) closed for entry and exit, (2) closed for entry (3) closed for exit (4) open for commercial traffic only (5) open only to returning nationals and residents (6) open for entry and exit (7) other and (8) unknown. All types of measures were considered for airports, land and blue border crossing points. In the region, the operational status of border crossing points is characterized by the implementation of several restriction measures to curb the spread of COVID-19. Significant changes in operational status of the PoEs were observed between April 2020 and January 2021.²

The share of **fully closed PoEs** among those assessed decreased significantly by 33 per cent in December (1%) since it peaked in April (34%) of the same year. The downward trend of fully closed PoEs between April and December slightly reversed in January 2021, when the share of fully closed PoEs was 3% (+2% in comparison with December 2020). Furthermore, the share of **partially operational PoEs** among those assessed decreased by 21% in December (6%) after the peak in May and June (27%). The share of partially operating PoEs remained low in January, increasing by only 1 per cent (7%). Finally, a noticeable increase of fully operational PoEs among those assessed was observed during the reporting period. The largest share of **fully operational PoEs** was recorded in November (85%), while the smallest share was recorded in May (31%), representing a significant increase of 54 per cent when comparing the two months. Although a relatively high number of the assessed PoEs remains fully operational, there has been a slight decrease in January 2021 (-4% in comparison with November 2020).



Overall, the operational status of all the assessed PoEs within the EEA region remained relatively stable between August 2020 and January 2021 when the majority of the assessed PoEs remained open (78% in August, 84% in September, 85% in October, 87% in November, 85% in December, and 81% in January).

In January 2021, a new slight increase in the share of fully closed PoEs among those assessed is registered compared to December 2020.

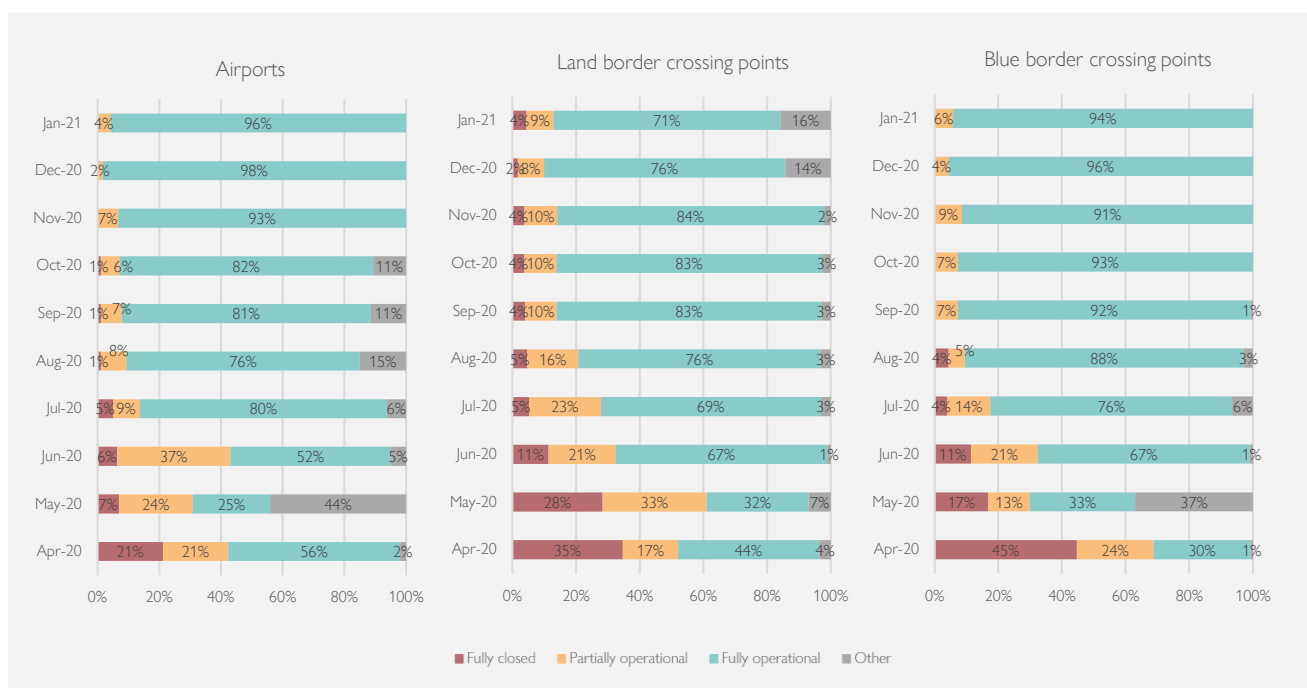
2. The months from April to December always refer to 2020, while January refers to 2021 within the scope of this report.

Airports:³ The largest share of **fully closed international airports** was recorded in April (21%), while none of the assessed airports was reportedly closed in November, December, and January. Overall, the highest share of closed airports was only recorded in April throughout the entire reporting period, while the share of fully closed airports of those assessed was 7 per cent in May, 6 per cent in June, 5 per cent in July, and only 1 per cent in August, September, and October, respectively. Furthermore, 37 per cent of assessed airports was **partially operational** in June, while the share of partially operational airports dropped by 35 per cent in December (2%), which represents the smallest share of partially operational airports recorded during the reporting period. The number of partially operating airports remained relatively stable in the second half of 2020 (9% in July, 8% in August, 7% in September and November, respectively, and 2% in December), and January (4%). The largest share of **fully operational airports** among those assessed was recorded in December (98%), marking a significant increase of 73 per cent when compared with May (25%), when the smallest share of fully operational airports during the reporting period was recorded. Between October and December alone, the number of operational airports increased by 17 per cent. It is, however, noticed that the number of assessed airports has increased from 150 airports in April up to 190 assessed in January 2021.

Land border crossing points:⁴ The largest share of **fully closed land border crossing points (LBCPs)** among those assessed throughout the reporting period was recorded in April (35%), while the smallest share was recorded in December (2%), with a significant decrease of 33 per cent between the two months. It is observed that only a relatively small number of the assessed LBCPs was completely closed from June until January (11% in June, 5% in July and August, respectively, 4% in September, October, November, and January, respectively, and 2% in December). Furthermore, the share of **partially operational LBCPs** of those assessed decreased by 25 per cent in December (8%) since the peak reached in May (33%). The number of partially operating LBCPs remained relatively stable in September, October, November (10%, respectively), December (8%), and January (9%). The largest share of **fully operational LBCPs** was observed in November (84%), while the lowest was recorded in May (32%), representing a significant increase of 52 per cent when comparing the two months. Between November (84%) and December (76%) alone, the number of fully operational LBCPs decreased by 8 per cent, while this number further dropped to 71% in January.

Blue border crossing points:⁵ The largest share of **fully closed border crossing points (BBCPs)** among those assessed was recorded in April (45%), while none of the assessed BBCPs was reportedly fully closed from September 2020 until January 2021. Furthermore, the share of **partially operational BBCPs** among those assessed decreased by 20 per cent in December (4%) from the peak reached in April (24%). The share of **fully operational BBCPs** peaked in December (96%), marking a significant increase of 66 per cent when compared with April (30%). Since April (30%), the number of BBCPs being fully operational increased month by month until October (93%), and then decreased slightly in November (91%). The number of fully operational BBCPs increased by 5 per cent between November and December, and then dropped again slightly in January (94%), representing a downward trend according to the most recent developments.

Monthly change in operational status by type of location (PoE) assessed between April 2020 and January 2021



Note: "Type of location" refers to the type of PoEs assessed, which are airports, land and blue border crossing points

3. By April a total of 150 airports were assessed, in November, 180 airports were assessed, in December 188 airports were assessed, while a total of 190 airports were assessed in January 2021.

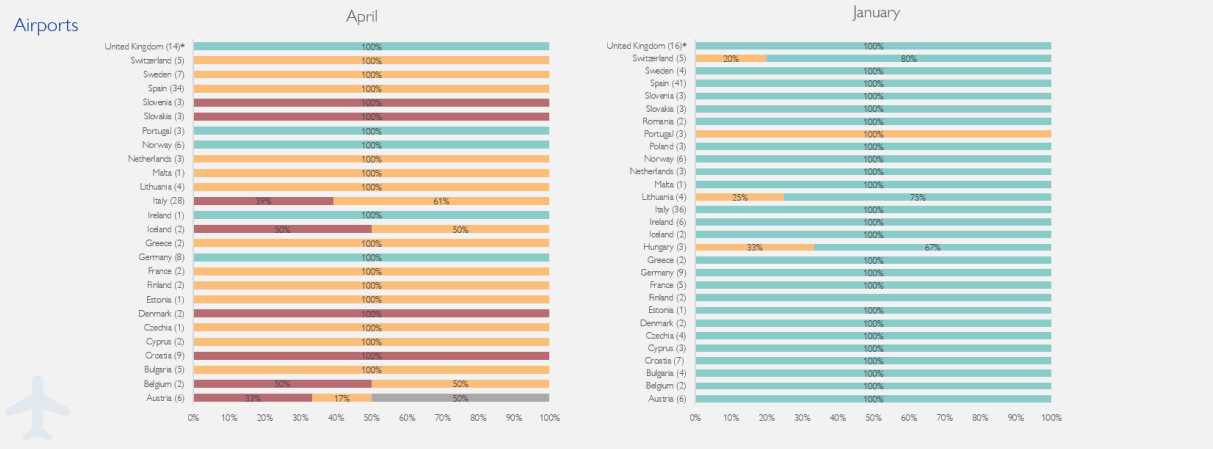
4. By April a total of 453 land border crossing points were assessed, in November and December 476 land border crossing points were assessed, respectively, while a total of 480 LBCPs were assessed by January 2021.

5. By April a total of 141 blue border crossing points were assessed, while in November, December, and January a total of 139 blue border crossing points were assessed.

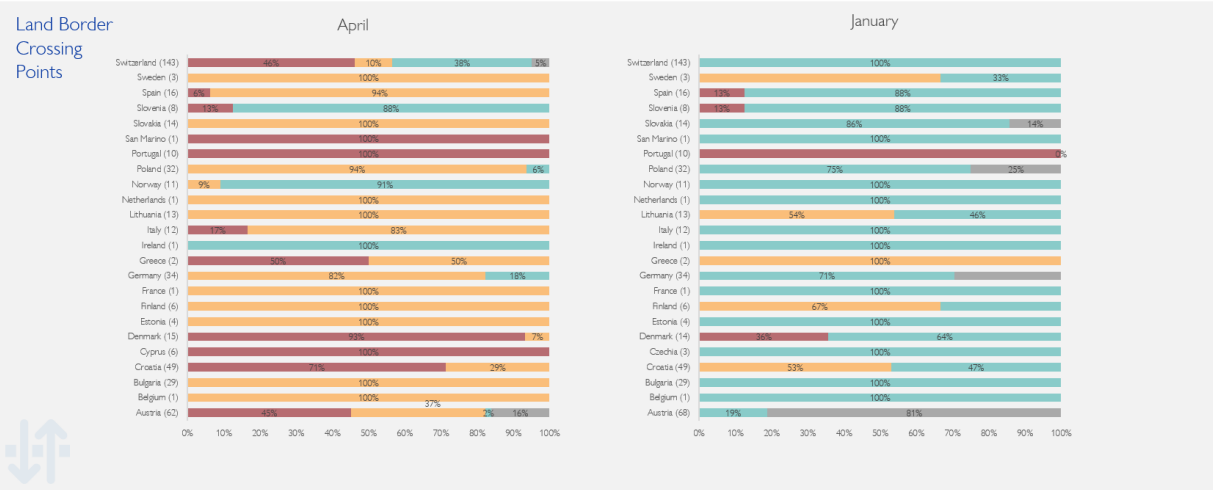
Operational Status breakdown by country/territory/area in the EEA region

Legend: Fully closed (dark red), Partially operational (orange), Fully operational (teal), Other (grey)

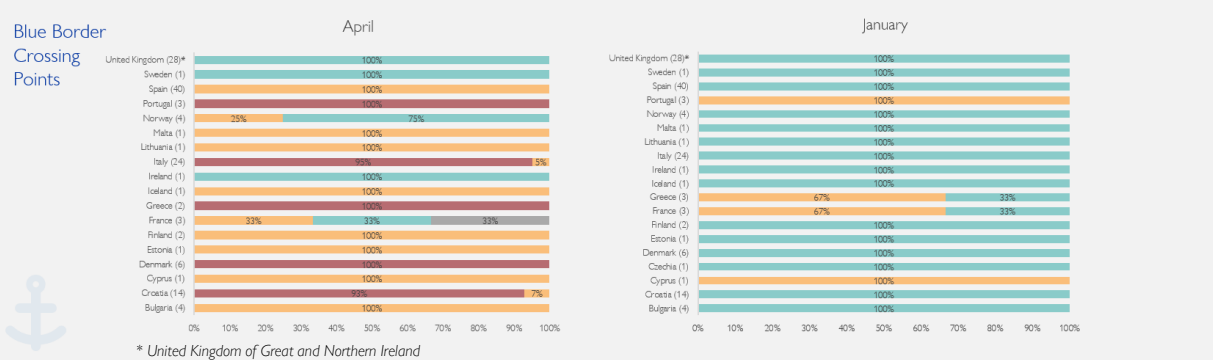
Airports



Land Border Crossing Points

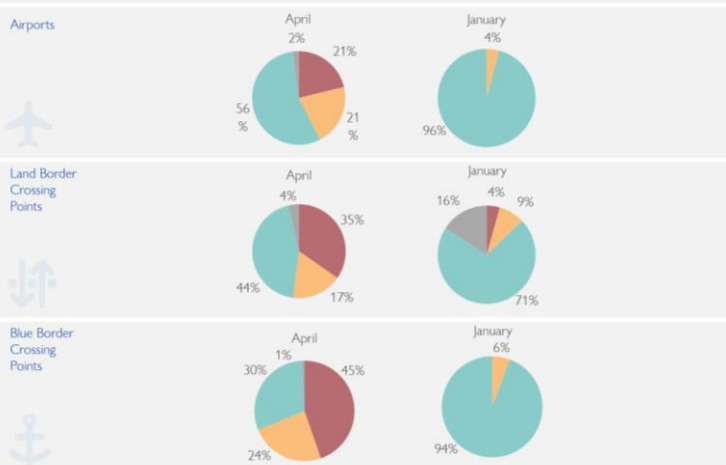


Blue Border Crossing Points



* United Kingdom of Great and Northern Ireland

Operational Status breakdown by country/territory/area in the EEA region



Notes:

- The totals in the pie charts are relative to the assessed Points of Entry;
- Under the category "Partially Operational" IOM includes "closed for entry, "closed for exit", "open only to returning nationals and residents" and "open for commercial traffic only".

Changes in mobility restrictions over time: April 2020 – January 2021

Slight changes in the type of mobility restrictions of the border crossing points were observed between April and December. Mobility restrictions refer to restrictions of movements imposed both by entrance at PoEs and by exit through the PoEs, and medical measures.

The largest share of **restrictions imposed on entering** through particular PoEs at the **international airports** was recorded in April and May (60% of all restrictions), while the restrictions imposed at entry were 40 per cent of the total from July until January, hence dropping by 20 per cent between April and January. Furthermore, April recorded the largest share (33%) of **restrictions imposed on exiting** through particular PoEs at the international airports, when compared with the period August to January (14%). The share of **medical measures including mandatory quarantine measures** increased significantly from September onwards: in April, 7 per cent of the restrictions were medical measures imposed on the specific PoEs, while the share of medical measures out of all restrictions was 11 per cent in May, 25 per cent in June, 31 per cent in July, 39 per cent in August, 40 per cent in September, and October, respectively, and 41 per cent in November, December, and January. The share of medical measures increased by 34 per cent in November, December, and January, when compared with April.

Regarding the **LBCPs**, 45 per cent of all **restrictions were imposed on entering** through particular PoEs from April to January, remaining steady throughout the entire reporting period, except in June, when these were 44 per cent of the total. Furthermore, April and May (44%, respectively) recorded the largest share of **restrictions imposed on exiting** through particular PoEs when compared with August until January (40% each month). The share of **medical measures** increased slightly by October when compared with previous months: in April, 11 per cent of the restrictions were medical measures imposed on particular PoEs, while medical measures were 12 per cent of total measures in May, 13 per cent in June, 15 per cent in August and September, respectively, and 16 per cent from October until January.

With regards to the **BBCPs**, the highest share of **restrictions imposed on entering** through particular PoEs was recorded in May (59%), with a decrease by 13 per cent since August when 46 per cent of all restrictions were imposed at entry. Furthermore, the largest share of **restrictions imposed on exiting** through a particular PoE was recorded in April (48%), while the share was 7 per cent from August to January. The share of **medical measures imposed** on particular PoEs changed significantly throughout the reporting period: in April, 7 per cent of the restrictions were medical measures, while the share of medical measures was 8 per cent in May, 36 per cent in June, 43 per cent in July, and 47 per cent since August.

Most of **all imposed restrictions** concern the entry through the PoEs (airports, land and blue border crossing points), and to a lesser extent the exit through or medical restrictions imposed at those PoEs. The highest number of restrictions to enter through the PoEs was recorded in April and May: 60 per cent at the assessed airports, 59 per cent at the BBCPs, and 45 per cent at the assessed LBCPs. The lowest number of restrictions to enter through the PoEs was recorded in July: 40 per cent at the assessed airports, 44 per cent at the assessed LBCPs, and 32 per cent at the assessed BBCPs.

Mobility Restrictions – Comparison: April 2020 – January 2021

Location type	Mobility Restriction	April	May	June	July	August	September	October	November	December	January
Airports	→ Restrictions to enter through this PoE	60%	60%	53%	40%	46%	46%	46%	46%	46%	46%
	← Restrictions to exit through this PoE	33%	29%	22%	29%	14%	14%	14%	14%	14%	14%
	Medical measures including mandatory quarantine	7%	11%	25%	31%	39%	40%	40%	41%	41%	41%
Land Border Crossing Points	→ Restrictions to enter through this PoE	45%	45%	45%	44%	45%	45%	45%	45%	45%	45%
	← Restrictions to exit through this PoE	44%	44%	42%	41%	40%	40%	40%	40%	40%	40%
	Medical measures including mandatory quarantine	11%	12%	13%	15%	15%	15%	16%	16%	16%	16%
Blue Border Crossing Points	→ Restrictions to enter through this PoE	45%	59%	47%	32%	46%	46%	46%	46%	46%	46%
	← Restrictions to exit through this PoE	48%	34%	17%	25%	7%	7%	7%	7%	7%	7%
	Medical measures including mandatory quarantine	7%	8%	36%	43%	47%	47%	47%	47%	47%	47%

Mobility Restrictions – Comparison: April – January 2021 (%)

