



HIGHLIGHTS



10
States



338
Locations



1,553
Key Informants

The Displacement Tracking Matrix (DTM) is a global IOM system used to track and monitor displacement and population mobility. It has been implemented in over 80 countries worldwide and is designed to regularly and systematically capture, process and disseminate information to provide a better understanding of the movements and evolving needs of mobile populations, whether on site or en route. It is comprised of four distinct components, namely: Mobility Tracking, Registration, Flow Monitoring and Surveying.

Commencing in November 2020, DTM Sudan began its preparation for the second round of Mobility Tracking; this started with the expansion of DTM operations across three additional states of implementation, namely Kassala, Gedaref and Blue Nile, followed by visiting locations in North, East, South, West, and Central Darfur, as well as South and West Kordofan which were not visited in [Round One](#). Data collection was then carried out over a two-month period, concluding in mid-March, and followed by data cleaning and verification to produce the second round of results.

Geographically, Round Two covers 165 locations in North Darfur, two locations in East Darfur, six locations in South Darfur, 31 locations in Central Darfur, four locations in West Darfur, 53 locations in South Kordofan, 20 locations in West Kordofan, 17 locations in Gedaref, 14 locations in Kassala and 26 locations in Blue Nile. Across these 338 new locations, DTM captured 637,160 additional internally displaced persons (IDPs) and 323,039 additional returnees not captured by DTM teams in Round One.

It is important to note that the above mentioned 338 locations were not visited in Round One, and therefore, this Round Two report provides an accumulative overview of the 1,425 locations visited in Round One, and the additional 338 locations visited in Round Two. Accordingly, any increase in figures since Round One is due to expanded geographic coverage, and is not indicative of an increase in population presence in previously visited locations.

Mobility Tracking Round Two identified the accumulative presence of 3,036,593 IDPs, 969,397 permanent returnees from internal displacement, 141,495 seasonal returnees, 92,696 returnees from abroad, and 399,946 foreign nationals currently residing in Sudan.

INTERNALLY DISPLACED PERSONS (IDPs)



3,036,593
Individuals

+ 637,160



647,256
Households

+ 155,722

PERMANENT RETURNEES FROM INTERNAL DISPLACEMENT



969,397
Individuals

+ 265,801



180,550
Households

+ 47,568

SEASONAL RETURNEES



141,495
Individuals

+ 3,625



27,532
Households

+ 820

RETURNEES FROM ABROAD



92,696
Individuals

+ 53,613



18,169
Households

+ 10,071

FOREIGN NATIONALS



399,946
Individuals

+ 259,285



91,091
Households

+ 54,290

METHODOLOGY

DTM's operational expansion in Sudan, and the implementation of the Mobility Tracking methodology, serve to gain a comprehensive understanding of displacement by providing regularly updated figures on population movements. This in turn informs and guides humanitarian response planning and durable solutions.

MOBILITY TRACKING

Mobility Tracking is a methodology aimed at the systematic collection of information on selected target population groups within defined locations, and it allows to update such figures at regular intervals to provide updates on displacement and other forms of mobility in Sudan. Through this standard methodology, DTM produces an evidence base for programme planning, with the intention to support humanitarian, transition and recovery operations across the country.

DTM employs enumerators who originate from the areas of assessment. Enumerators collect quantitative data at location level, through direct interviews with key informants (selected for their knowledge of the area under observation). Key informants consist of representatives from the Humanitarian Aid Commission (HAC), humanitarian aid workers, religious and other prominent community leaders.

The methodology utilised to implement Mobility Tracking Round Two is summarised below:

- DTM conducted a Training of Trainers (ToT) in Khartoum with DTM teams from the states of operation on the Mobility Tracking methodology and data collection process.
- DTM teams visited Gedaref, Kassala and Blue Nile to introduce the DTM programme, its Mobility Tracking methodology and data collection process – facilitated and supported by HAC.
- Data collection commenced to verify the presence of target population groups across 338 locations not covered in Round One. Additional locations with target population presence were also identified throughout the data collection period, and added accordingly to DTM's existing baseline to be visited in Round Three.
- DTM teams relied on a broad network of key informants to quantify and detail the characteristics of each target population group present per location. Where possible, triangulation¹ of information provided by different key informants in the same geographic location further verified the figures.
- Additional information was collected, such as the time of arrival of IDPs, returnees from internal displacement and foreign nationals, as well as their locations of origin, reasons for displacement, return intentions, and temporary shelter categories.
- Sex and age disaggregation was projected based on the headcount of at least ten households within each identified location and for each population group present.

- Locations are defined as the smallest administrative units where population groups can be assessed, such as villages, neighbourhoods, camps, or gathering-sites.

Field teams will continue to revisit all locations and interview key informants to update locations and verify population presence on a periodic basis – ensuring updates are communicated regularly through datasets and reports, and remain reflective of evolving dynamics in Sudan.

TARGET POPULATION GROUPS

DTM in Sudan collects information on the following target population groups:

Internally displaced persons

According to the Guiding Principles on Internal Displacement, IDPs are: “persons or groups of persons who have been forced or obliged to flee or to leave their homes or places of habitual residence, in particular as a result of or in order to avoid the effects of armed conflict, situations of generalized violence, violations of human rights or natural or human-made disasters, and who have not crossed an internationally recognized state border” (United Nations, 1998). Building from this, and for operational purposes, DTM lists a person to be displaced if they have been forced or obliged to flee from their habitual residence due to an event dating from 2003 onwards, while subsequently seeking safety in a different location such as a village, neighbourhood, camp, or gathering site.²

Returnees from internal displacement

Persons who were previously displaced from their habitual residence, within Sudan, due to an event dating from 2003 onwards, and have now voluntarily returned to the location of their habitual residence, irrespective of whether they have returned to their former residence or to another shelter type. Under this definition, DTM is only monitoring returns, without referring to whether the return was safe, dignified, or a durable solution.

Permanent returnees from internal displacement: Any returnee from internal displacement who has returned to their place of habitual residence.

Seasonal returnees from internal displacement: Any returnee from internal displacement who returns to their place of habitual residence annually based on seasonal activities, such as seasonal harvests.

Returnees from abroad

Classified as all Sudanese nationals who have returned to Sudan from abroad, regardless of whether they sought international protection or not.

Foreign nationals

Any person who is not a Sudanese national and residing within the location (village, neighbourhood, camp, gathering site) regardless of their status; including persons who may/may not have sought international protection while in Sudan.

¹ Triangulation refers to triple verification done by interviewing at least three key informants for best estimates.

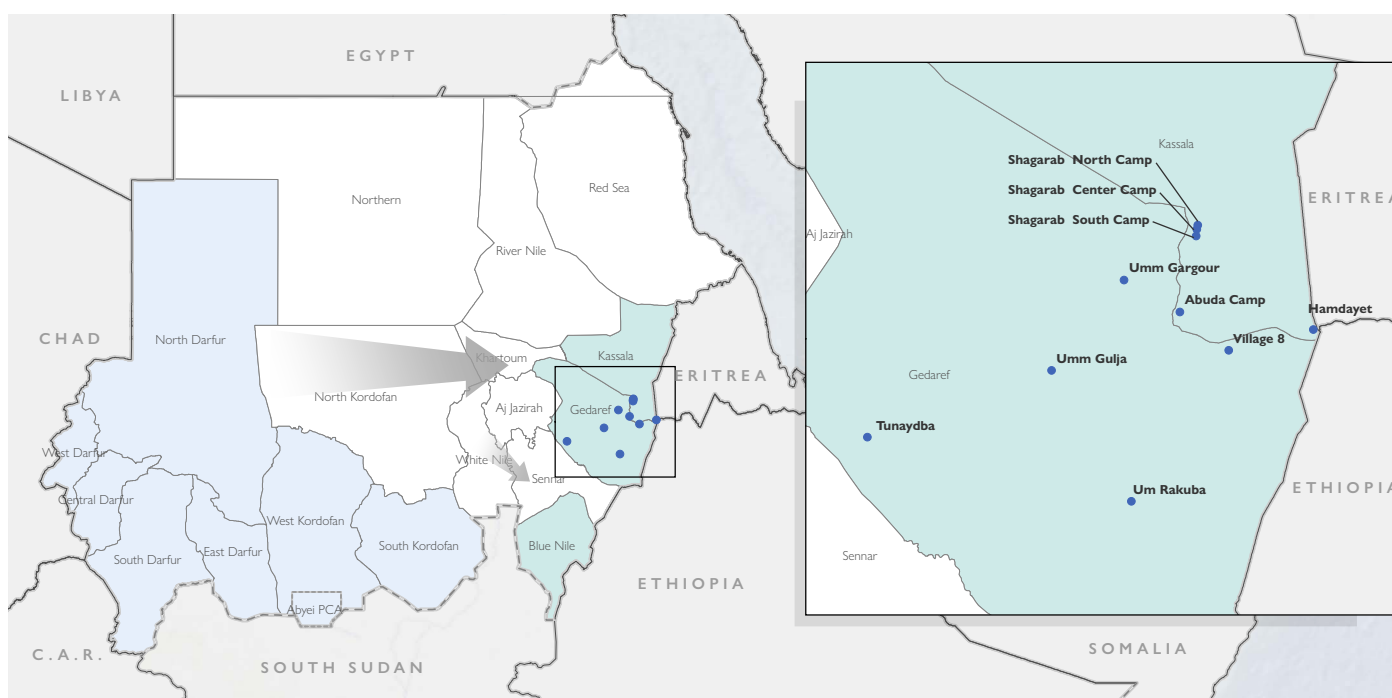
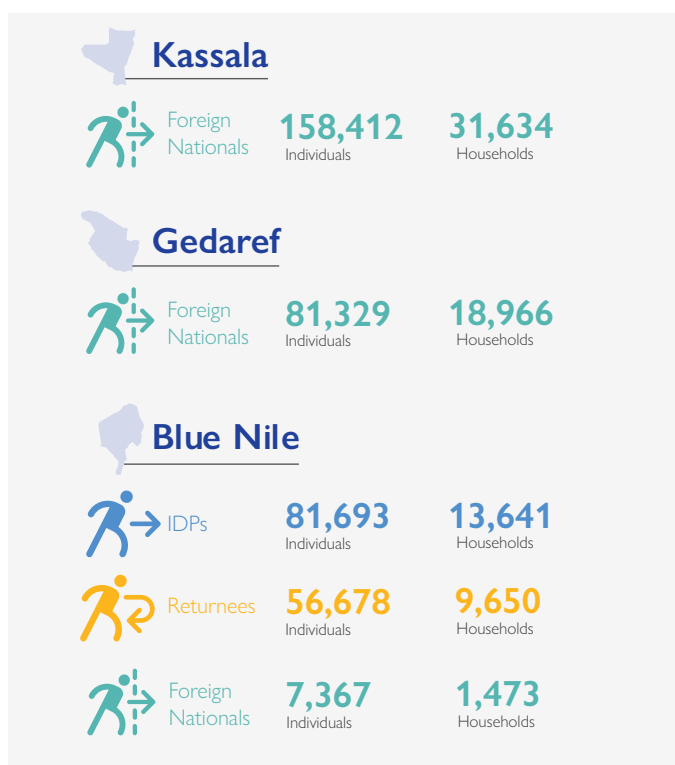
² For a nomadic population, habitual residence refers to the habitual living space on which their pastoral way of life is dependent.

EXPANSION TO GEDAREF, KASSALA AND BLUE NILE

DTM's expansion to Gedaref, Kassala and Blue Nile states in late 2020 provides IOM's first baseline estimation figures indicating population presence of vulnerable groups across the southeast region of Sudan.

Historically, there has been limited internal displacement and return in Gedaref and Kassala states. However, since 1984 (and more recently in 2020 with the influx of Tigray and Amhara tribes from Ethiopia due to armed conflict in the Tigray region of Ethiopia), both states host large foreign national populations. DTM's definition of foreign nationals includes any person who is not Sudanese, regardless of their status; including persons who may/may not have sought international protection while in Sudan. Foreign nationals originate from Eritrea and Ethiopia, in addition to Somalia, South Sudan, Palestinian Territories, Chad, Syrian Arab Republic, India and Jordan. A substantial percentage of these populations are located within eight main locations across Kassala and Gedaref (see Map 1). Namely, these include Um Gargour, Umgulja, Tunaydba, Um Rakuba, Village 8, Hamdayet, Abuda, and Shagarab camps.³

Since 1987, inter-communal armed conflict across Blue Nile has resulted in displacement of local populations. In 2011 and 2014, many Sudanese fled Blue Nile (Baw locality in particular) into Ethiopia (Tango camp) and South Sudan. Of those who did not cross international borders, many remain displaced in Blue Nile, Sennar and White Nile states.



Map 1 Operational Expansion to Blue Nile, Gedaref, and Kassala

³UNOCHA (2021) UNHCR refugee camps. URL: <https://data.humdata.org/dataset/unhcr-refugee-camps>

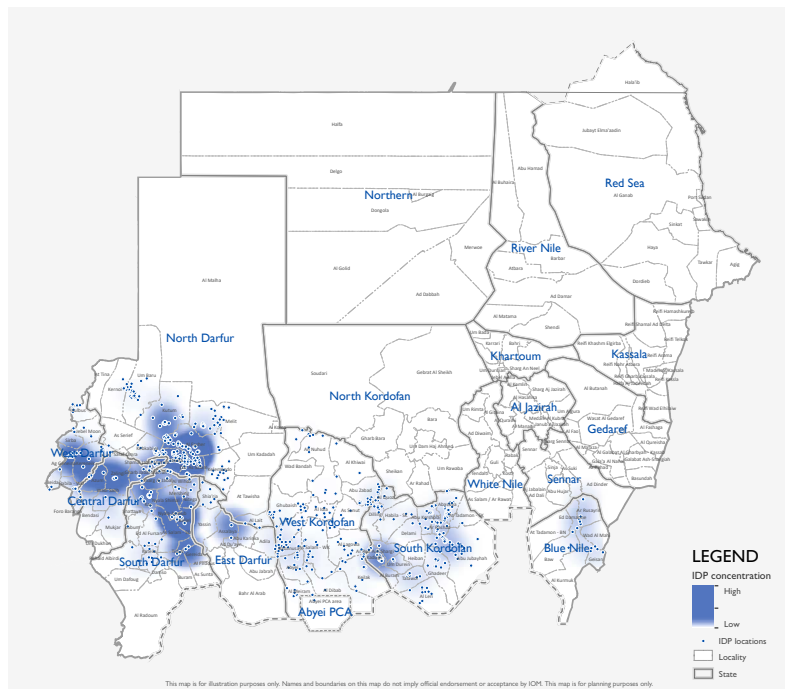
IDPs OVERVIEW

DTM identified a total accumulative number of 3,036,593 IDP individuals (647,256 households) across eight states in Sudan. Through DTM's expansion into Blue Nile, DTM captured 81,693 IDPs across 13 newly identified locations. Overall, 637,160 IDP individuals (155,722 households) were identified in Round Two.

The greatest proportion of displacement in the country is protracted (ongoing for more than five years) (refer to Diagram 3). Subsequently, an estimated 1,753,007 current IDPs (57%) were initially displaced between 2003 and 2010 at the height of the Darfur crisis. In comparison, 47,398 IDPs (2%) captured have been newly displaced in 2019 and 29,765 (1%) in 2020 – this does not demonstrate a decreasing trend in new displacement as this Round Two report only covers locations not visited in Round One. In Blue Nile, the majority of IDPs (73,449 individuals) were displaced between 2011 and 2017 due to inter-communal conflict.

In terms of population presence, the state with the highest number of IDPs is North Darfur – having recorded an estimated 933,320 individuals (31% of the total IDP count). This increase in population presence in North Darfur captured in Round Two is due to the addition of an estimated 381,904 IDPs (111,310 households) captured in Zamzam Camp, Al Fasher. South Darfur hosts the second largest population presence with 797,081 IDPs (26% of the total IDP count). Comparatively, Blue Nile is estimated to have the lowest population presence with 81,693 IDPs (3%), followed by West Kordofan (91,343 IDPs, 3%).

North Darfur has the greatest number of IDP locations – consisting of 270 locations (31% of the total), followed by South Kordofan (29%) and West Kordofan (19%). East Darfur has the fewest number of IDP locations and represents just one per cent of the total location count, followed by Blue Nile (2%) and West Darfur (5%). IDPs are most highly concentrated in the Darfur states, with Central Darfur hosting on average 13,215 IDPs per location, East Darfur hosting 12,462 IDPs per location and South Darfur hosting 11,071 IDPs per location. In contrast, South and West Kordofan have a far sparser distribution – averaging 1,108 IDPs and 560 IDPs respectively per location. This dynamic is attributed to the high presence of densely populated camps in Darfur in comparison to more informal gathering-sites in South and West Kordofan.

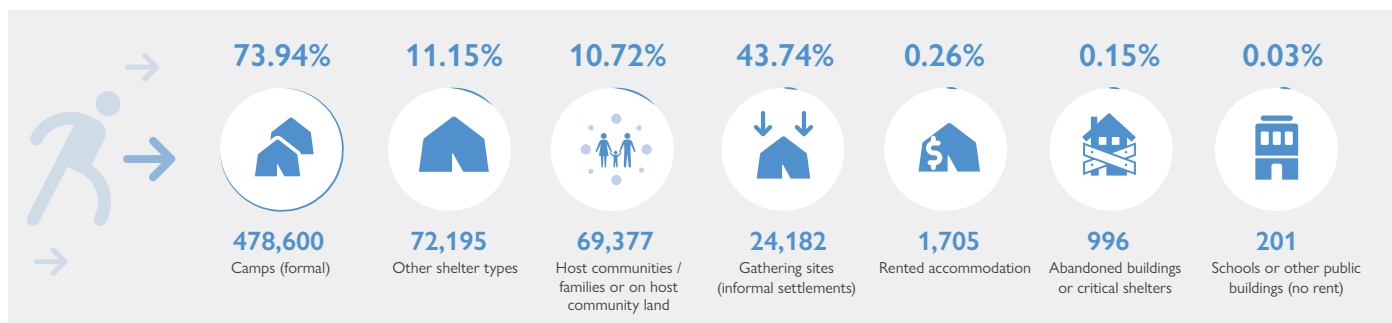


Map 2: IDP Population Density

State	Round One	Round Two	Accumulative Total
North Darfur	31% 503,200 Individuals	430,120 Individuals	933,320 Individuals
South Darfur	26% 793,328 Individuals	3,753 Individuals	797,081 Individuals
Central Darfur	14% 377,209 Individuals	45,668 Individuals	422,877 Individuals
West Darfur	11% 335,301 Individuals	2,500 Individuals	337,801 Individuals
South Kordofan	9% 217,683 Individuals	55,098 Individuals	272,781 Individuals
West Kordofan	3% 73,015 Individuals	18,328 Individuals	91,343 Individuals
Blue Nile	3% Not Covered	81,693 Individuals	81,693 Individuals
East Darfur	3% 99,697 Individuals	Not Covered	99,697 Individuals

Diagram 1: Percentage of IDPs per State and Comparison of MT Rounds⁴

TEMPORARY IDP HOUSEHOLDS SHELTER TYPES



⁴ Round Two of MT only visited locations not covered in Round One. Data on Round One locations where sudden displacements occurred can be found in DTM's Emergency Event Tracking reports.

MAIN CAUSES OF DISPLACEMENT

Armed conflict was identified as the primary reason for displacement in 95 per cent of IDP locations assessed. Communal clashes, which tend to be based on tensions over ethnicity, land, or livestock, were reported to be the main reason for displacement in four per cent of IDP locations. Economic reasons – populations forced to move due to a lack of livelihoods and/or service provision – were reported to be the main reason for displacement in one per cent of locations assessed.

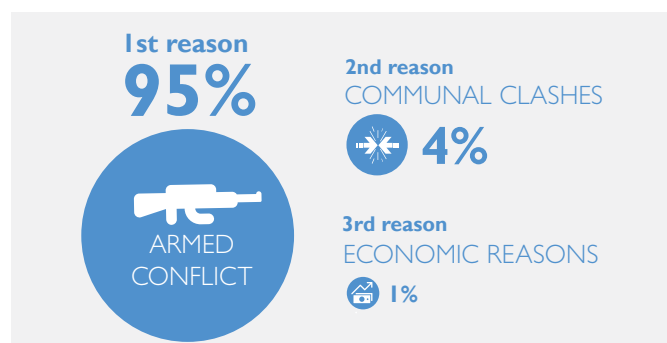


Diagram 2: Main Reasons for IDP Displacement

PLACES OF ORIGIN OF IDPs

The largest proportion of IDPs across Sudan are displaced from within the same state as they are currently residing. In Blue Nile and South Kordofan, displaced individuals are solely from within their own state – suggestive of logistical and security restrictions faced by IDPs when travelling far distances in search of safety. South Darfur and West Kordofan, in contrast, host a heterogeneous group of IDPs from neighbouring states and beyond.

RETURN INTENTION

Data collected through the return intention indicator suggests that 447,401 IDP individuals (70%) intend to remain in their locations of displacement, whilst 189,759 IDP individuals (30%) intend to return to their locations of origin upon improvement of the security/economic situation.⁶ The majority of IDPs reporting intentions to remain in their locations of displacement are in North Darfur (66%). Comparatively, the majority of IDPs reporting intentions to return to their locations of origin are in Blue Nile (13%), South Kordofan (8%) and Central Darfur (7%).

PROJECTED SEX AND AGE DISAGGREGATION ACROSS ALL STATES⁵

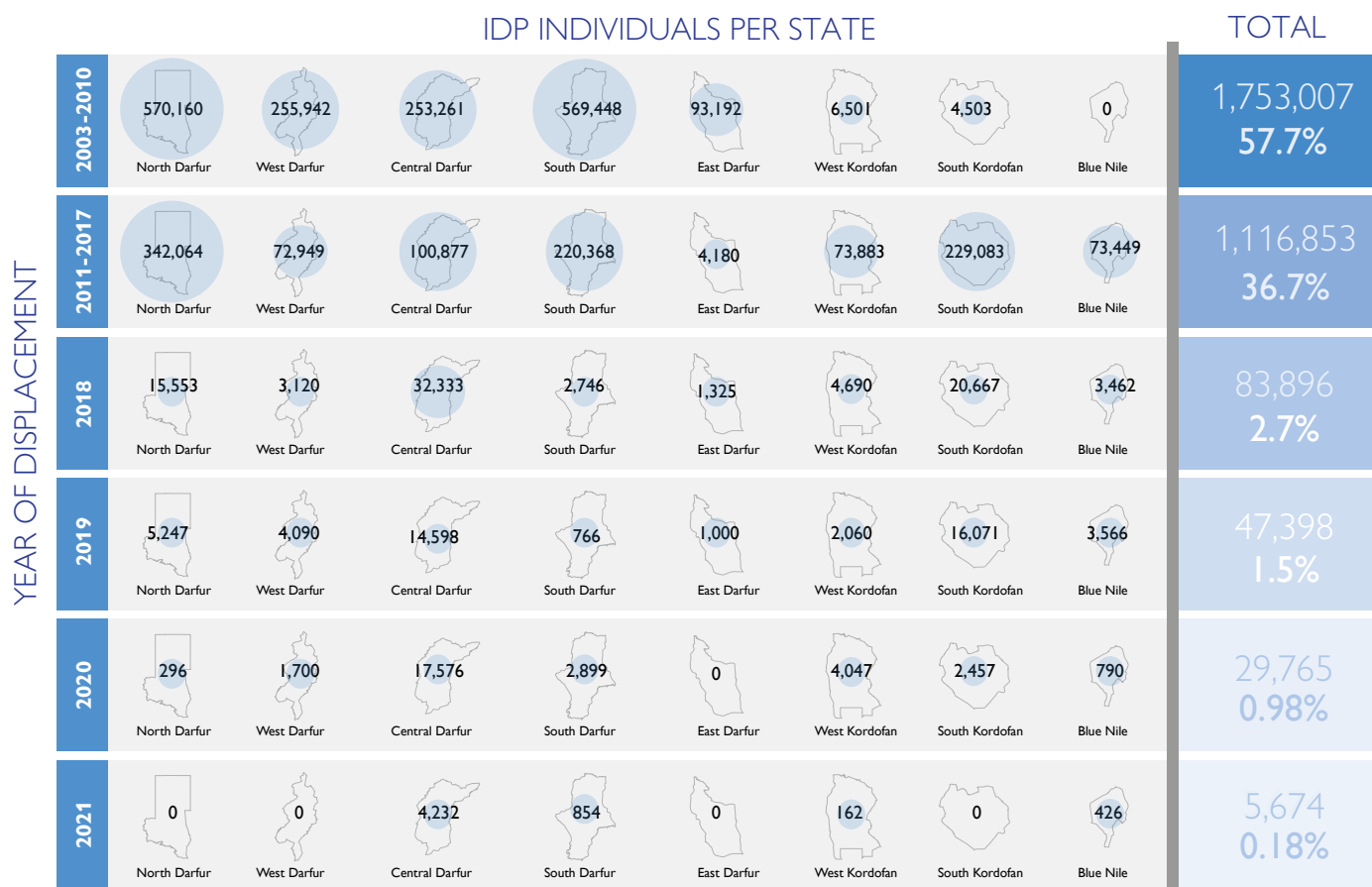
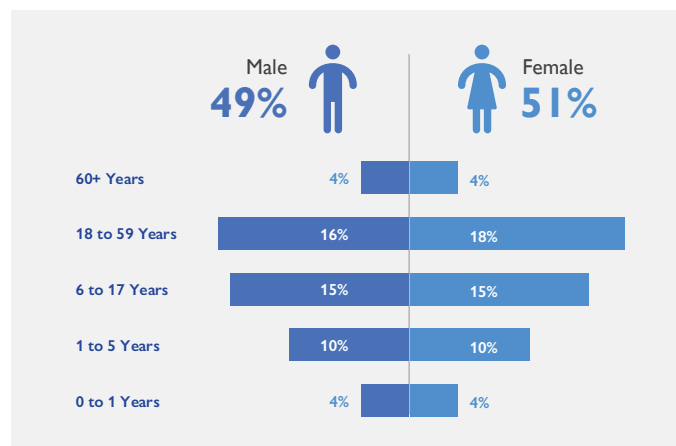


Diagram 3: Timeline of displacement by states with current IDP population presence⁷

⁵ Projected sex and age figures are compiled using the additional locations captured in Round Two.

⁶ The Return Intention Indicator was added in Round Two.

⁷ Round Two of MT only visited locations not covered in Round One. Data on Round One locations where sudden displacements occurred can be found in DTMs Emergency Event Tracking reports.

RETURNEES FROM INTERNAL DISPLACEMENT OVERVIEW

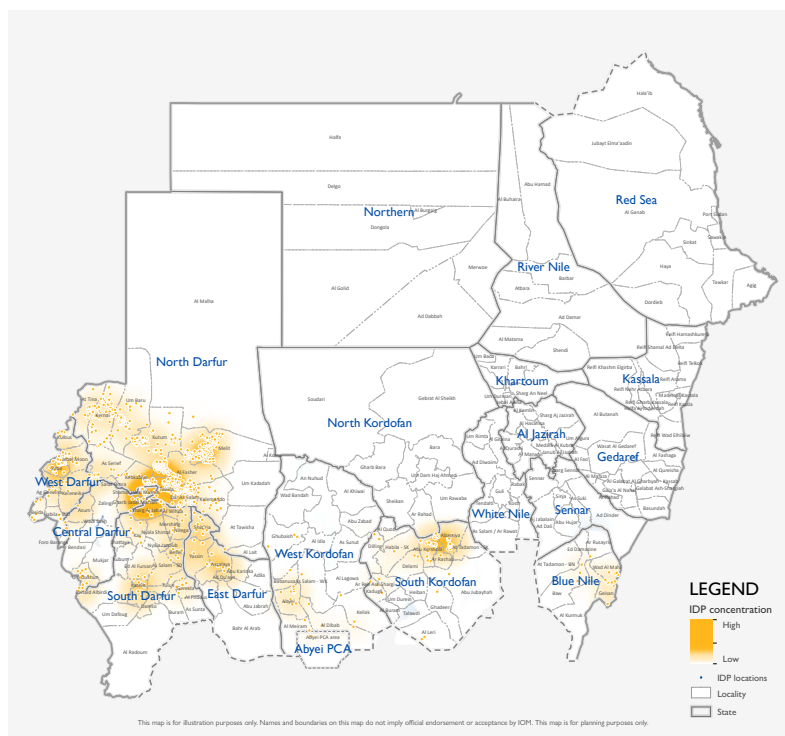
PERMANENT RETURNEES OVERVIEW

DTM estimates a total accumulative number of 969,397 permanent returnees from internal displacement (180,550 households) across eight states in Sudan. Through DTM's expansion into Blue Nile, DTM captured 9,702 permanent returnees across seven newly identified locations. Overall, 265,801 permanent returnee individuals (47,568 households) were identified in Round Two.

The lowest proportion of returns occurred during 2020 and over the first three months of 2021, while 2011 to 2015 saw the highest return rate – reflective of a mass influx of individuals returning to their habitual residences at the end of the Darfur crisis. Subsequently, an estimated 253,554 returnees (26%) returned between 2011 and 2015, followed by 190,308 returnees (20%) in 2018, 164,841 returnees (17%) in 2017 and 138,017 returnees (14%) in 2016. This steady decrease in returns suggests a correlation between the increased length of protracted displacement and the diminishing likelihood of returns – families forging new lives for themselves as they become settled into what were originally 'temporary' sites of displacement.

In terms of population presence, the state with the highest number of permanent returnees is North Darfur, where the total population presence is 305,315 individuals (31% of the total individual count). Blue Nile, in comparison, estimates a total number of 9,702 permanent returnees (1%) – the lowest proportion of total returnees, attributed to Blue Nile hosting the lowest percentage of IDPs or the lowest percentage of people displaced from the area.

North Darfur has the greatest number of returnee locations – consisting of 718 locations (70% of the total), followed by West Darfur (7%) and South Kordofan (6%). Blue Nile and East Darfur have the fewest number of returnee locations, each representing two per cent of the total location count. Returnees are highly concentrated in East, Central and South Darfur, with East Darfur hosting an average of 4,451 returnees, Central Darfur hosting 3,740 returnees and South Darfur hosting 3,437 returnees per location. West Kordofan currently has the lowest returnee population count per location, with an average of 411 individuals per location, followed by North Darfur (424 individuals per location).

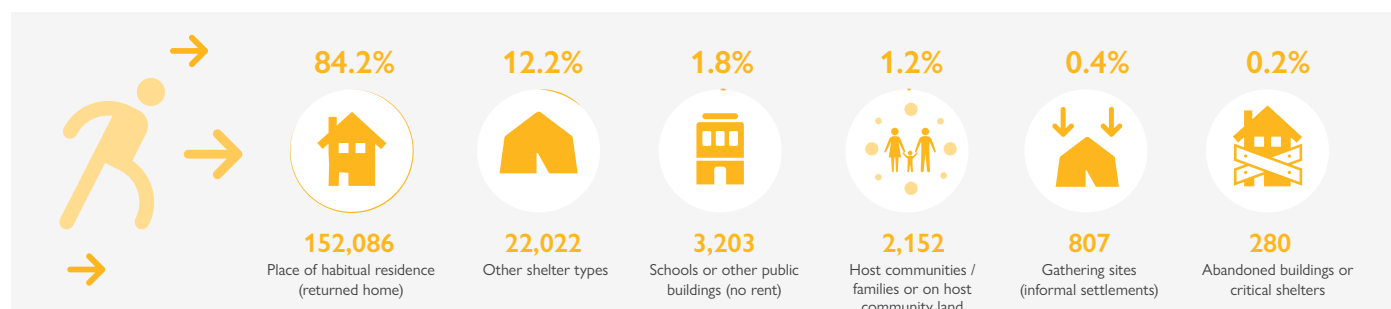


Map 3: Permanent Returnee Population Density

STATE		Round One	Round Two	Acumulative Total
North Darfur	31%	246,292 Individuals	59,023 Individuals	305,315 Individuals
Central Darfur	20%	65,362 Individuals	129,118 Individuals	194,480 Individuals
South Darfur	19%	138,582 Individuals	43,575 Individuals	182,157 Individuals
East Darfur	11%	95,284 Individuals	7,081 Individuals	102,365 Individuals
West Darfur	9%	78,829 Individuals	6,981 Individuals	85,810 Individuals
South Kordofan	8%	68,720 Individuals	10,154 Individuals	78,874 Individuals
West Kordofan	1%	10,527 Individuals	167 Individuals	10,694 Individuals
Blue Nile	1%	Not Covered	9,702 Individuals	9,702 Individuals

Diagram 4: Returnees per state by MT Round

SHELTER TYPES IN WHICH PERMANENT RETURNEE HOUSEHOLDS ARE RESIDING



PERMANENT RETURNEE LOCATIONS OF PREVIOUS DISPLACEMENT

Chart 1 illustrates the population movement between states where permanent returnees were originally displaced from, and states where those permanent returnees have returned. North Darfur hosts the largest proportion of permanent returnees originally displaced from locations within other states. South Darfur hosts the second largest proportion of returnees originally displaced from locations within other states. Almost all permanent returnees within Central Darfur and West Darfur were originally displaced from locations within the same state. Field teams estimate that all permanent returnees captured in West Kordofan, South Kordofan, Blue Nile, and East Darfur were originally displaced from locations within the same state.

PROJECTED SEX AND AGE DISAGGREGATION FOR PERMANENT RETURNEES ACROSS ALL STATES⁶

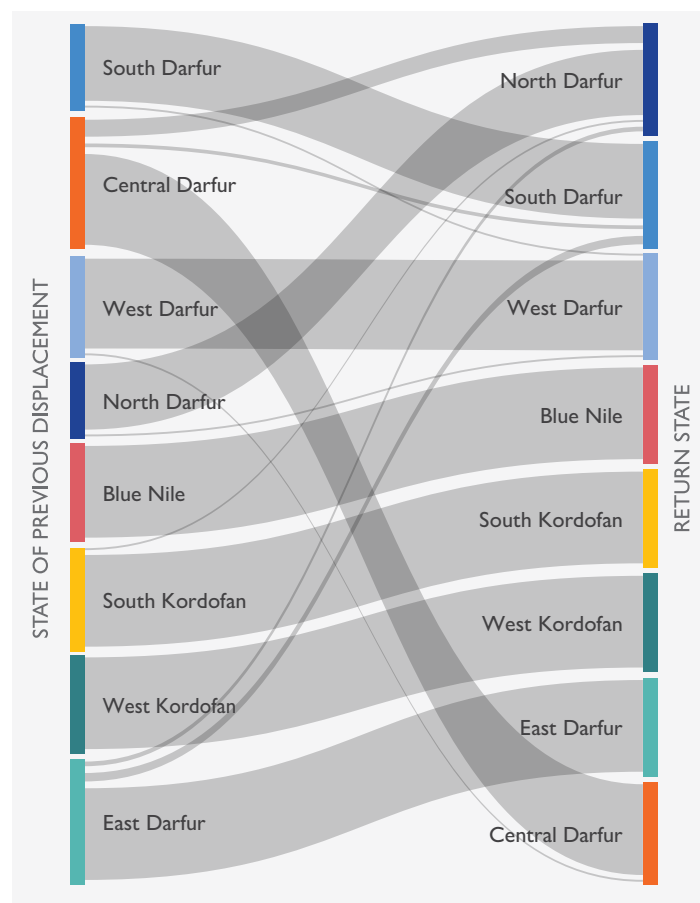
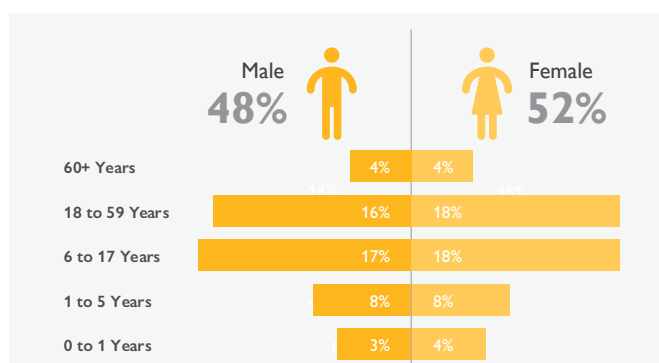
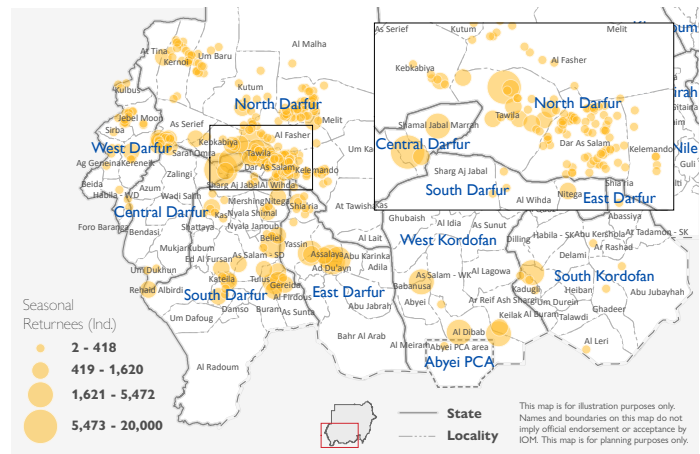
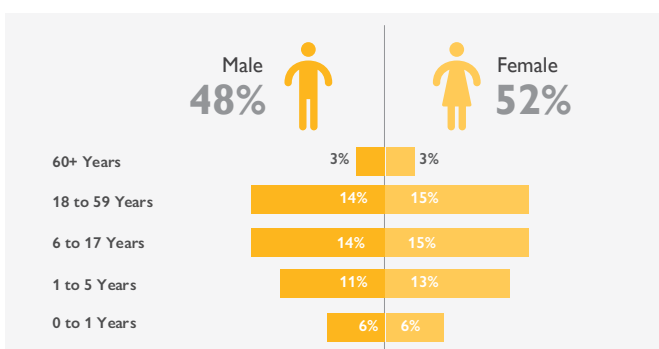


Chart 1: States of previous displacement and permanent return

SEASONAL RETURNEES OVERVIEW

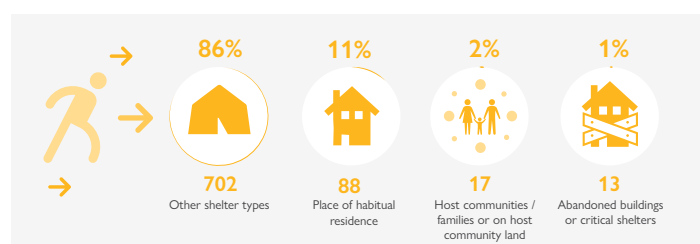
DTM estimates a total accumulative number of 141,495 seasonal returnees (27,532 households) across seven states in Sudan. In Round Two, DTM teams observed 3,625 seasonal returnees (820 households) who returned to their habitual residence on an impermanent basis – due to seasonal changes and cultivation, harvesting and livestock purposes. These population figures are expected to remain influx and observe drastic changes over the course of each year, as people continue to move with the seasons.

PROJECTED SEX AND AGE DISAGGREGATION FOR SEASONAL RETURNEES ACROSS ALL STATES⁸



Map 4: Seasonal returnee population density

SHELTER TYPE IN WHICH SEASONAL RETURNEES HOUSEHOLDS ARE RESIDING⁹



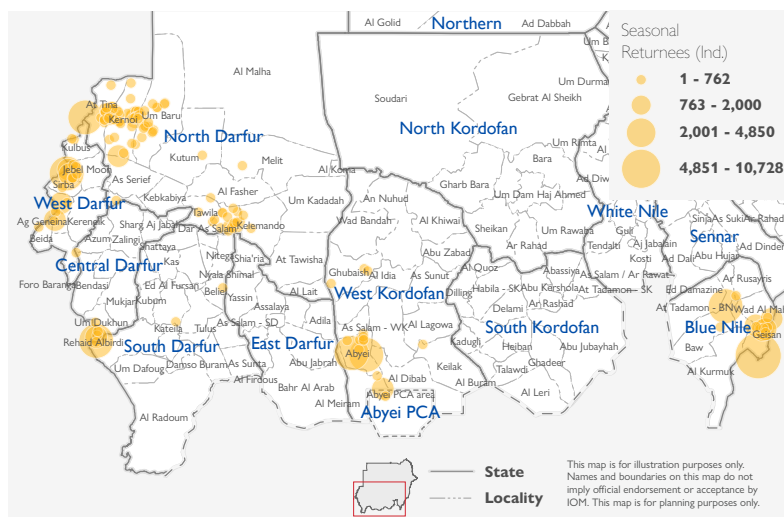
⁶ Projected sex and age figures are compiled using the additional locations captured in Round Two.

⁹ Shelter figures are compiled using the additional locations captured in Round Two, thereby covering 808 households in total.

RETURNEES FROM ABROAD OVERVIEW

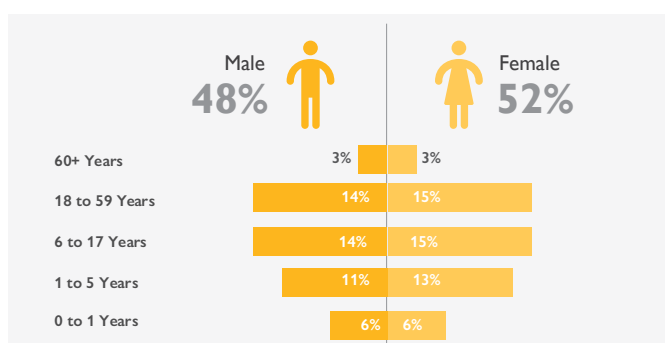
DTM estimates a total accumulative number of 92,696 returnees from abroad (18,169 households) across seven states in Sudan. The estimated figures of returnees from abroad were lower than returnees from internal displacement, representing just eight per cent of the total returnee count (consisting of 1,203,588 individuals and 226,251 households respectively). Overall, 53,613 returnee from abroad individuals (10,071 households) were identified in Round Two.

The highest proportion of returnees from abroad (an estimated 17,398 individuals, 19%) returned to Sudan between 2011 to 2015 – reflective of a mass influx of individuals returning to their habitual residences at the end of the Darfur crisis – followed by 10,669 returnees (12%) in 2017.

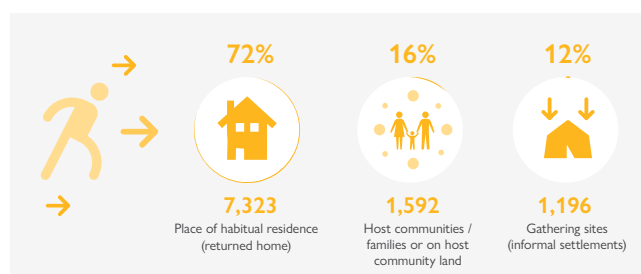


Map 5: Returnees from Abroad Population Density

SEX AND AGE DISAGGREGATION FOR RETURNEES FROM ABROAD ACROSS ALL STATES¹⁰



SHELTER TYPE IN WHICH RETURNEE FROM ABROAD HOUSEHOLDS ARE RESIDING¹¹



COUNTRIES OF DISPLACEMENT OF RETURNEES FROM ABROAD

Most returnees from abroad returned from Chad (44%), followed by Ethiopia (21%) and South Sudan (10%). Predominantly, they are located in North Darfur (27,500 individuals) and Blue Nile (23,533 individuals), which can be explained in relation to the proximity to the borders of Chad and Ethiopia.

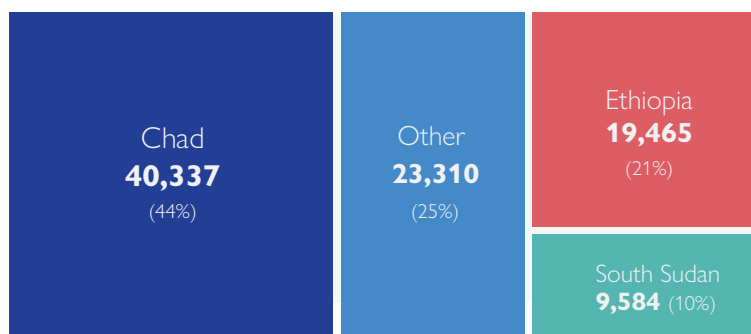
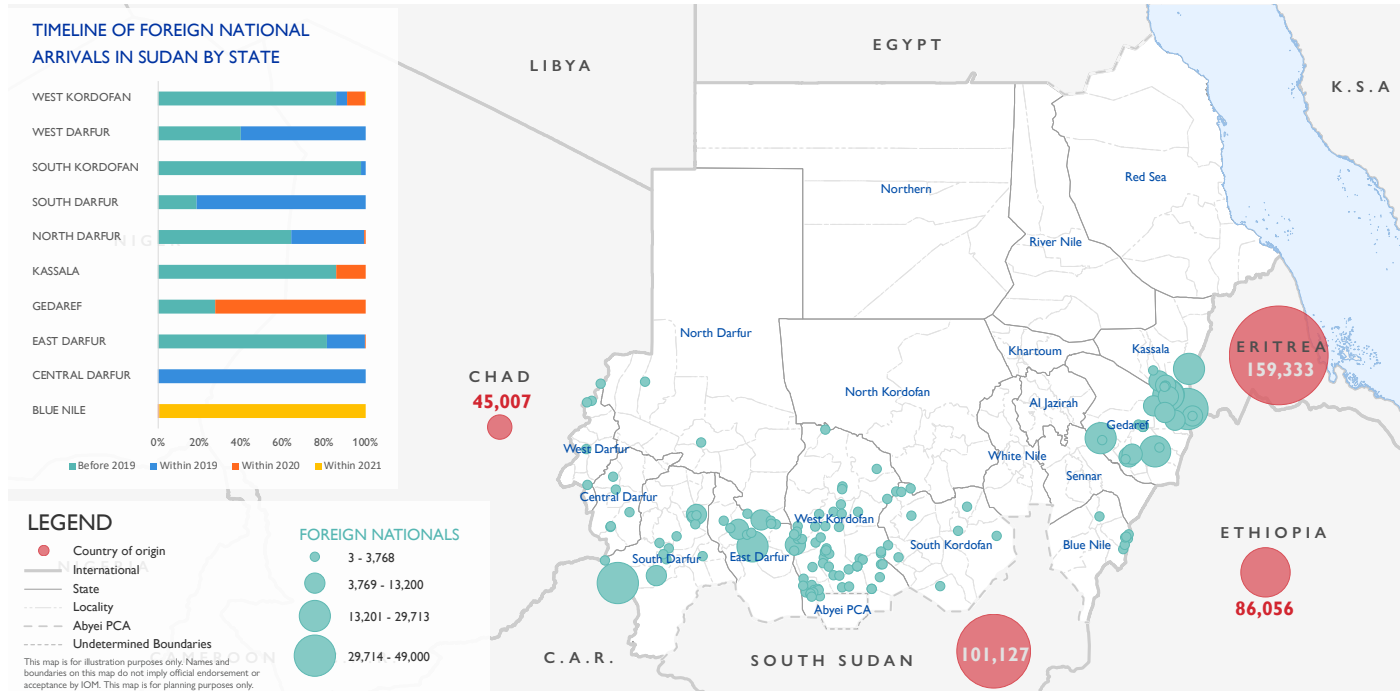


Chart 2: Countries from which Returnees Have Returned¹⁰

¹⁰ Projected sex and age figures are compiled using the additional locations captured in Round Two.

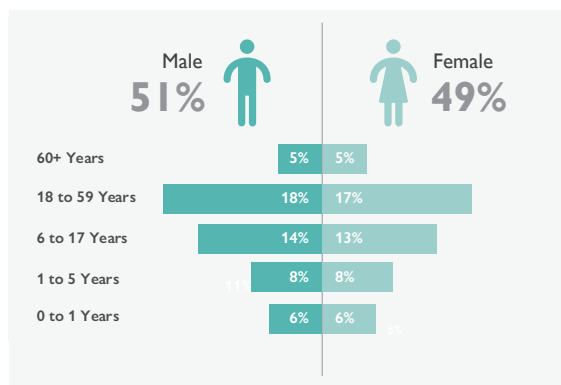
¹¹ Shelter figures are compiled using the additional locations captured in Round Two, thereby covering 10,111 households in total.

FOREIGN NATIONALS OVERVIEW



DTM estimates a total accumulative number of 399,946 foreign nationals (91,091 households) across ten states in Sudan, irrespective of their legal status. Overall, 259,285 foreign national individuals (54,290 households) are observed in Round Two due to DTM's expansion to the east of Sudan. Forty per cent of the total foreign nationals are in Kassala, followed by Gedaref (20%) and South Darfur (14%). Eritreans constitute 40 per cent of the total foreign population count, followed by South Sudanese (25%), Ethiopians (22%) and Chadians (11%). The highest proportion of foreign nationals (an estimated 243,180 individuals, 61%) arrived in Sudan before 2019.

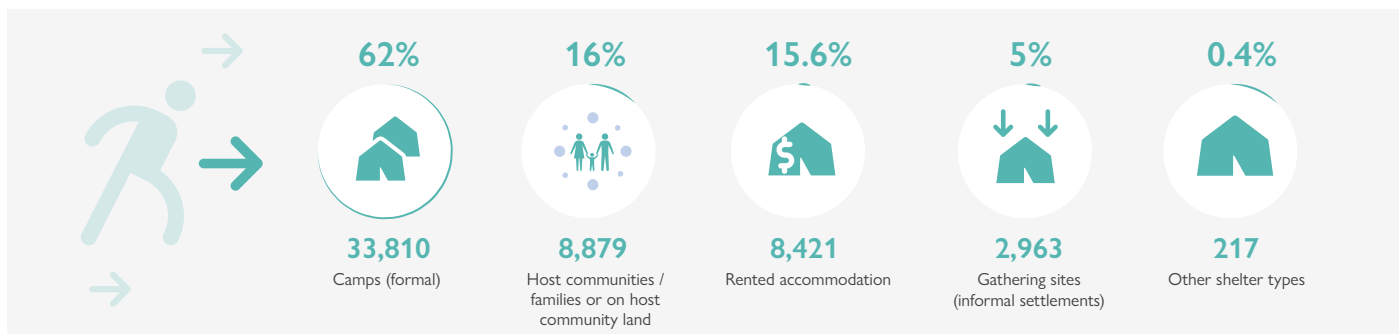
SEX AND AGE DISAGGREGATION FOR FOREIGN NATIONALS ACROSS ALL STATES¹²



STATE	Round One	Round Two	Acumulative Total
Kassala	40% Not covered	158,412 Individuals	158,412 Individuals
Gedaref	20% Not covered	81,329 Individuals	81,329 Individuals
South Darfur	14% 56,016 Individuals	Not covered	56,016 Individuals
West Kordofan	10% 29,489 Individuals	9,072 Individuals	38,561 Individuals
East Darfur	9% 37,722 Individuals	499 Individuals	38,221 Individuals
North Darfur	3% 11,565 Individuals	100 Individuals	11,665 Individuals
Blue Nile	2% Not covered	7,367 Individuals	7,367 Individuals
South Kordofan	1% 3,972 Individuals	853 Individuals	4,825 Individuals
Central Darfur	0.8% 1,540 Individuals	1,653 Individuals	3,193 Individuals
West Darfur	0.2% 357 Individuals	Not covered	357 Individuals

Diagram 5: Foreign Nationals per State by MT Round

SHELTER TYPE IN WHICH FOREIGN NATIONAL HOUSEHOLDS ARE RESIDING¹³



¹² Projected sex and age figures are compiled using the additional locations captured in Round Two.

¹³ Shelter figures are compiled using the additional locations captured in Round Two, thereby covering 54,290 households in total.

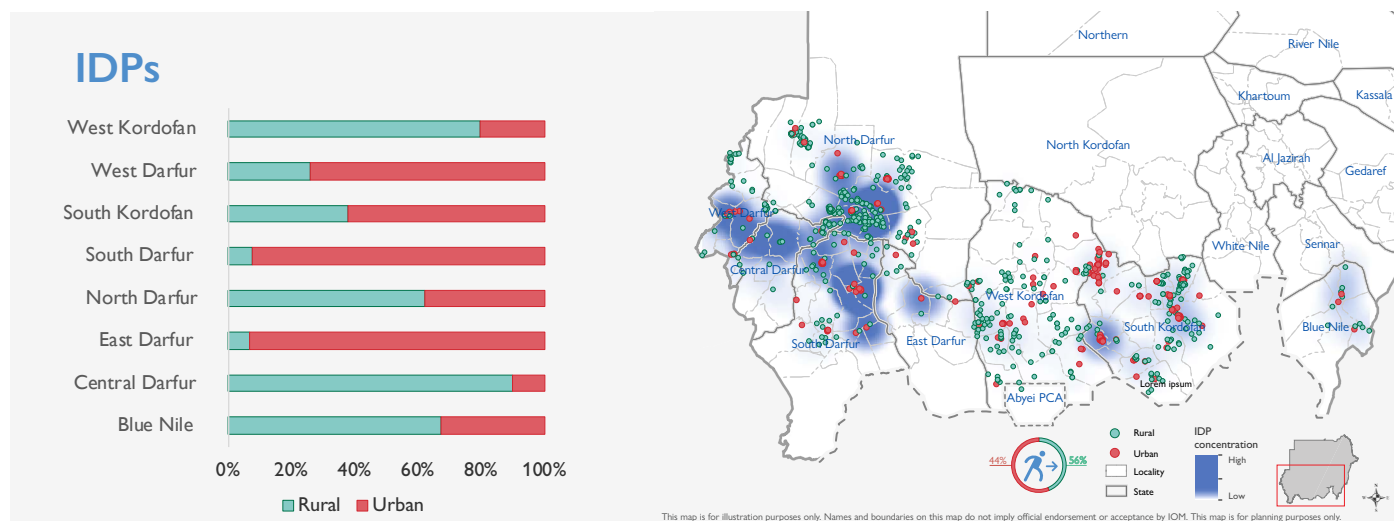
GEOGRAPHICAL CLASSIFICATIONS OF INTERNAL DISPLACEMENT AND RETURN

An overview of the geographical distribution of population presence illustrates that 1,692,869 IDPs (56%) are in urban areas and 1,343,724 IDPs (44%) in rural areas across the eight states assessed by DTM. In comparison, 894,839 returnees from internal displacement (92%) have returned to their rural habitual place of origin, while only 74,558 (8%) have returned to urban settings.

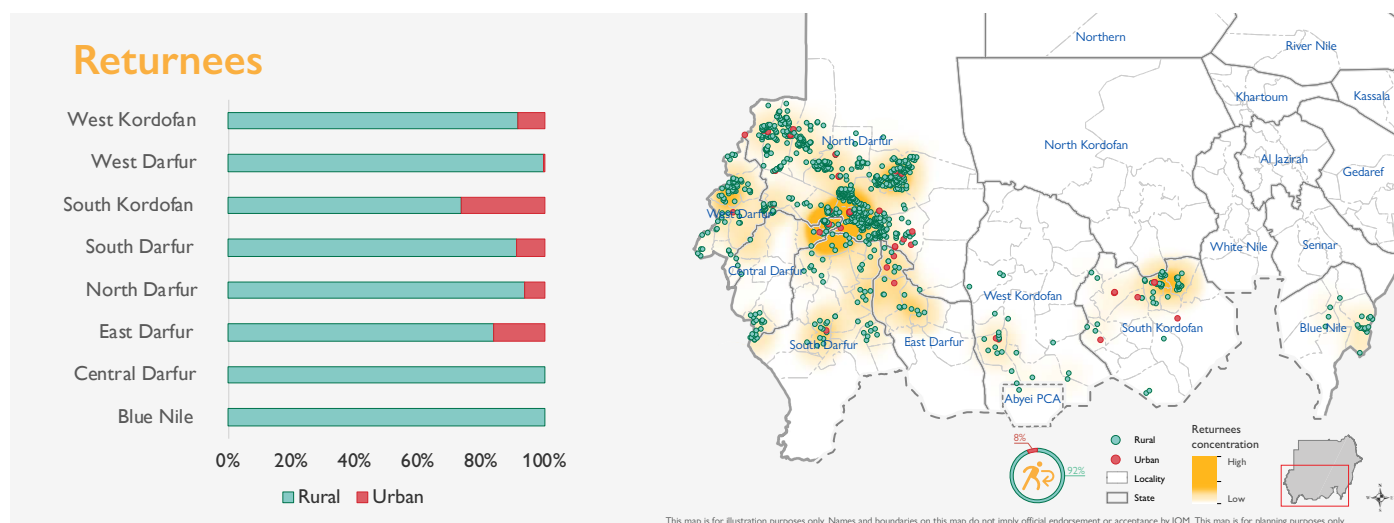
Both Blue Nile, North and Central Darfur and West Kordofan predominantly host rural IDPs, whereas IDPs in East, South and West Darfur are mostly found in urban locations. Neither Blue Nile, Central Darfur nor West Darfur (apart from 150

individuals) have urban returnees, however, rural returnees from internal displacement are consistently distributed across all states assessed.

Furthermore, while most returnees from internal displacement are in rural villages, there is a far wider variety in IDP location types. In North, East and South Darfur, IDPs are predominantly located in urban camps. IDPs in Central Darfur are found in rural camps, and IDPs in West Kordofan tend to be found in rural villages. Finally, both West Darfur and South Kordofan observe the majority of IDPs to be in urban neighbourhoods or admin units.



Map 7: IDP population density and geographical (urban-rural) location classifications



Map 8: Returnee Population Density and Geographical (Urban-Rural) Location Classifications

CREDIBILITY RATING

The credibility rating per location is ranked by the enumerators and analysed in accordance with a set of indicators. Namely, these indicators include the number of key informants interviewed per location, whether the information was provided over the phone or in person, whether the information provided by the source (key informant) matches that of other sources, whether the source referenced any records or lists and whether the information provided by the source matched the enumerator's observations. The green, orange, and red scales (with green meaning high credibility, orange meaning medium and red meaning low) are then calculated based on analyses of the enumerator's responses to determine the credibility per location and highlight areas for future improvement.

Row Labels	Green	Orange	Red	Total Locations
North Darfur	147	9	9	165
South Kordofan	33	16	4	53
Central Darfur	11	11	9	31
Blue Nile	26	-	-	26
West Kordofan	19	1	-	20
Gedaref	6	9	2	17
Kassala	4	6	4	14
South Darfur	3	2	1	6
West Darfur	1	-	3	4
East Darfur	-	1	1	2
Grand Total	250	55	33	338



DTM Sudan

The Displacement Tracking Matrix (DTM) is a global IOM tool used to track and monitor displacement and population mobility. It is designed to regularly and systematically capture, process and disseminate information to provide a better understanding of the movements and evolving needs of displaced populations, whether on site or en route.

First introduced in Sudan in 2004, to provide rapid emergency registration for new displacement, the DTM has been continuously refined and adapted through the years to reflect the context and population movements specific to Sudan in both conflict and natural disaster settings. Deployed in partnership with the Humanitarian Aid Commission (HAC), it delivers an essential role in providing primary data and information to humanitarian partners on displacement and the needs and vulnerabilities on the ground, enabling and expediting the delivery of vital assistance to the most vulnerable populations, as well as capturing accurate and updated data on population demographics throughout the country.

DTM data includes information relevant to various humanitarian sectors such as water and sanitation, health, food and protection, making the resultant DTM data useful to broad range of humanitarian and development actors.

In addition to being systematically deployed in medium to large-scale humanitarian response operations, DTM has also proven to be highly effective as a preparedness tool, as well as in support of the recovery and transition phase of the response. Integrating DTM into capacity building activities, mapping of potential evacuation and displacement sites, and setting up the DTM prior to a disaster are some examples of how the DTM can be employed as an effective preparedness measure.

DTM SERVICES & CONTACTS

For further information, please contact IOM Sudan

KHARTOUM Head Office

Tel.: +249 157 554 600/1/2

E-mail: dtmsudan@iom.int

Website: www.sudan.iom.int | www.dtm.iom.int/sudan



IOM DISCLAIMER

The opinions expressed in the report are those of the authors and do not necessarily reflect the views of the International Organization for Migration (IOM). The designations employed and the presentation of material throughout the report do not imply the expression of any opinion whatsoever on the part of IOM concerning the legal status of any country, territory, city or area, or of its authorities, or concerning its frontiers or boundaries.

IOM is committed to the principle that humane and orderly migration benefits migrants and society. As an intergovernmental organization, IOM acts with its partners in the international community to: assist in the meeting of operational challenges of migration; advance understanding of migration issues; encourage social and economic development through migration; and uphold the human dignity and well-being of migrants.



Sudan
Humanitarian
Fund



Canada

