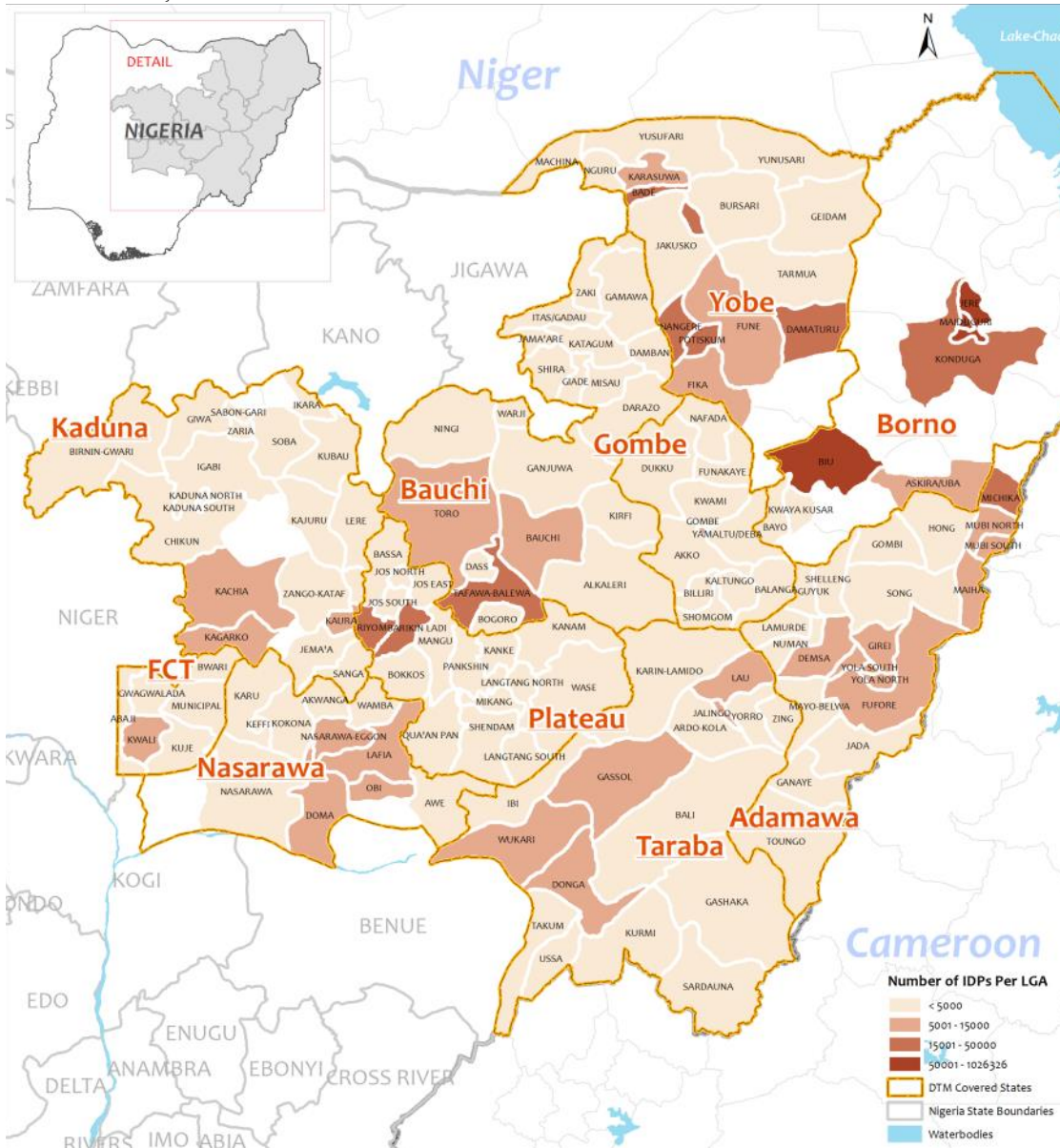


DISPLACEMENT HIGHLIGHTS

- ➔ 2,233,506 individuals (318,937 households) were identified in Adamawa, Bauchi, Borno, Gombe, Taraba, Yobe, Nasarawa, Plateau, Kaduna states and Abuja through DTM.
- ➔ In total, around 1,978,950 IDPs captured through the DTM assessments have been displaced by the insurgency (88.6% of the total IDP population).
- ➔ Majority of the IDPs are identified in Borno (1,606,406; 72%) followed by Yobe (144,302; 6.5%) and Adamawa (135,605; 6%).

Number of IDPs by LGA



- ◆ 57.4% of the IDP population are children and 28% are 5 years old or younger.
- ◆ 92% of IDPs live in host communities while 8% live in camps.
- ◆ 76 Camps and camp-like sites have been identified through the DTM assessments.
- ◆ 98% of the registered IDP population in round VI are willing to return home

INTRODUCTION

Nigeria has been affected by recurrent ethnical and pastoral conflicts as well as frequent natural disasters which have caused displacement across the country. Since 2014, the escalation of the Boko Haram insurgency has led to an increase in the number of internally displaced persons (IDPs) in the North East and most especially in the State of Borno, the centre of the insurgency.

In order to respond to the need for accurate and timely information on IDP movements, IOM started in collaboration with the National Emergency Management Agency (NEMA), the Displacement Tracking Matrix (DTM) program. The DTM program consists in building the capacity of the Government of Nigeria to establish a comprehensive system to collect and disseminate data on IDPs.

The DTM assessments are conducted by mixed teams composed of representatives of SEMA, Nigerian Red Cross Society and IOM and cover a total of ten states in the northern and central parts of the country: Abuja, Adamawa, Bauchi, Borno, Gombe, Kaduna, Nasarawa, Plateau, Taraba and Yobe states.

For this round of assessment, the DTM exercises were carried out from September to October 2015 in a total of 142 LGAs and 987 wards.

This report includes the results of the baseline assessments conducted at Local Government areas (LGAs) and ward level as well as the data gathered through the sites assessments that were carried out in camps and camp-like sites.

In addition, the results of the registration exercise conducted for 2,723 IDP households (16,042 individuals) in host communities are presented in this document.

The relative improvement of the security situation in the North East allowed the DTM teams to access additional locations during this round of assessments. In Adamawa, the teams could access Michika LGA while assessments were carried out in six LGAs in Borno: Maiduguri, Jere, Biu, Konduga, Kwaya Kusar and Bayo.

The DTM program is funded by the European Commission's Humanitarian Aid and Civil Protection department (ECHO) and the United States Agency for International Development (USAID)

The National Emergency Management Agency (NEMA) is also providing financial support to the program.

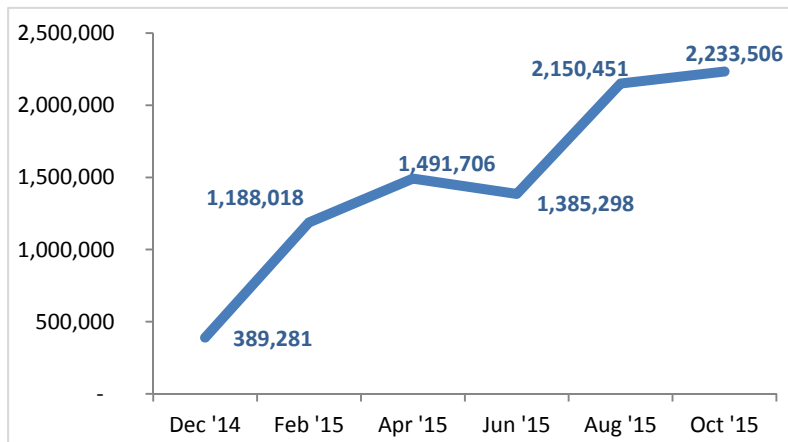
1 POPULATION PROFILE

1A: LOCATION OF DISPLACEMENT

The estimate total number of IDPs in Abuja, Adamawa, Bauchi, Borno, Gombe, Kaduna, Nasarawa, Plateau, Taraba and Yobe states as of the 31st of October 2015 is 2,233,506 IDPs (318,937 households). Borno state (1,606,406 IDPs) has the highest number of IDPs, followed by Yobe (144,302 IDPs) and Adamawa (135,605).

In total, around **1,978,950 IDPs** captured through the DTM assessments are considered to be displaced as a consequence of the Boko Haram insurgency.

Current Location	IDP Individuals	IDP Households	Average HHs size
ABUJA	12,628	1,914	6.6
ADAMAWA	135,605	18,225	7.4
BAUCHI	77,276	11,744	6.6
BORNO	1,606,406	218,671	7.3
GOMBE	27,025	6,220	4.3
KADUNA	42,247	5,644	7.5
NASARAWA	44,901	7,798	5.8
PLATEAU	91,511	15,639	5.8
TARABA	51,605	9,569	5.4
YOBE	144,302	23,513	6.1
Grand Total	2,233,506	318,937	7.0

Table 1: Total IDP Population by current location (State);*Graph 1: Number of IDPs-December 2014/October 2015*

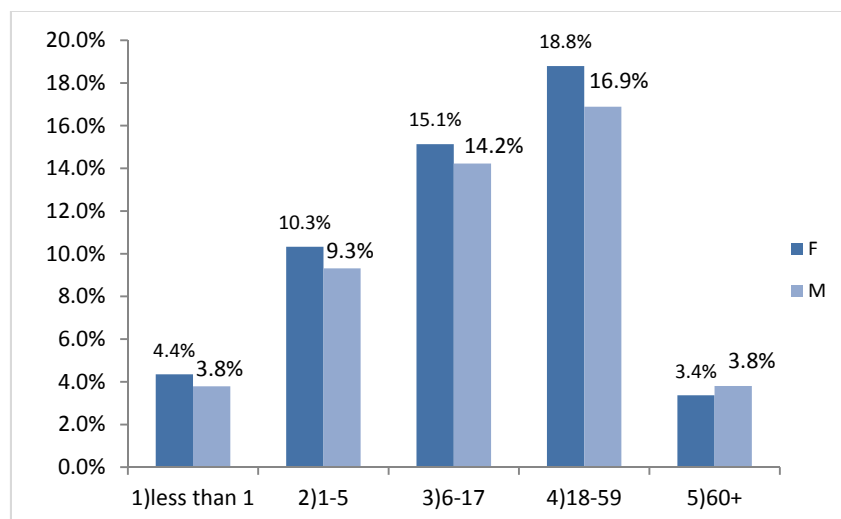
Round	Months of release	Number of IDPs	States covered
I	December 14	389,281	Adamawa, Bauchi, Gombe, Taraba and Yobe
II	February 15	1,188,018	Adamawa, Bauchi, Borno , Gombe, Taraba and Yobe
III	April 15	1,491,706	Adamawa, Bauchi, Borno, Gombe, Taraba and Yobe
IV	June 15	1,385,298	Adamawa, Bauchi, Borno, Gombe, Taraba and Yobe
V	August 15	2,150,451	Abuja Adamawa, Bauchi, Borno, Gombe, Nasarawa , Taraba and Yobe
VI	October 15	2,233,506	Abuja Adamawa, Bauchi, Borno, Gombe, Kaduna , Nasarawa , Plateau , Taraba and Yobe

The increase in the number of IDPs from December 2014 to October 2015 can be explained by the inclusion of additional states into the DTM assessments and the improved access to some locations throughout the year. In particular, the addition of Borno between the first and the second round have contributed to the significant increase in the total number of IDPs. On the other hand, the deterioration of the security situation in the North East and the regular attacks carried-out by Boko Haram in 2015 have generated additional displacement most especially in the states that were directly affected by the insurgency.

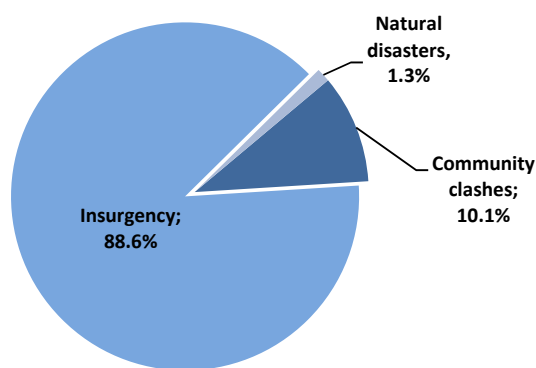
1B: DEMOGRAPHIC DATA

The demographic profile of the IDP population is the result of a survey conducted on a total of 16,239 households (5,1% of the identified IDP households) who were interviewed to obtain a detailed age and sex breakdown. This survey was conducted in a total of 987 wards using a sample of 20 households in each on the location assessed.

After extrapolation, the results of the survey show that 52% of the IDP population are female and 48 % are male. Children of less than 18 constitute 57% of the IDP population and approximately half of them (28%) are 5 years old or younger.

*Graph 2: IDP Population by major age group and sex breakdown;*

1C: REASONS OF DISPLACEMENT

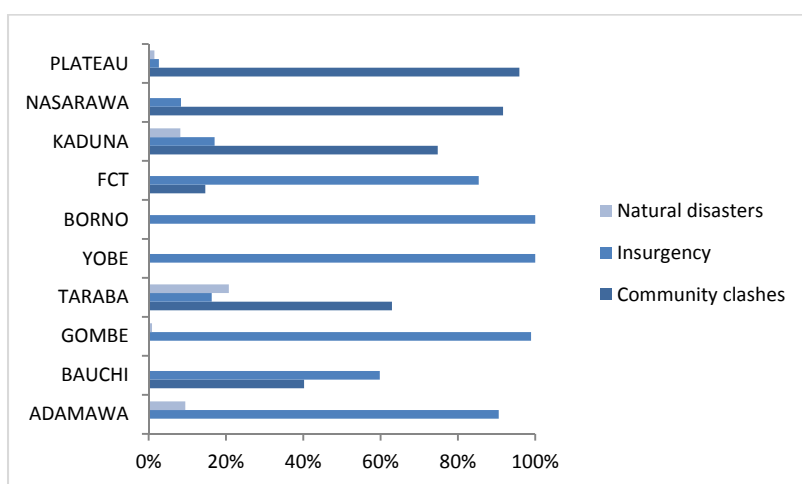


Due to the insurgency that is currently affecting the Northeastern part of Nigeria, the majority of IDPs identified through the DTM assessments have been displaced because of the insurgency (88.6%). A smaller number was forced to leave their place of origin because of community clashes (10.1%) or natural disaster (1.3%).

The decrease in the percentage of IDP who were displaced by the insurgency (95.3% in August 2015¹) and the increase in the number of IDPs displaced by communal clashes (4,6% in August 2015²) is due to the inclusion of Kaduna and Plateau states in this round of assessments and to the fact that in both states the majority of IDPs have been displaced by communal clashes.

Chart 1: IDP Population by reason of displacement

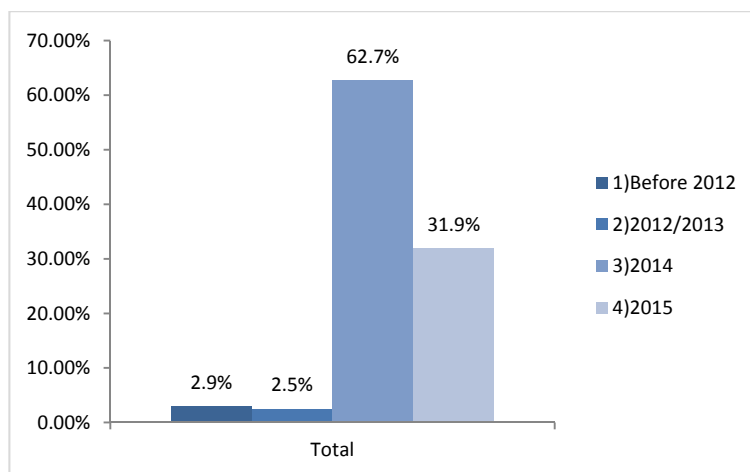
In most of the States that were assessed (Abuja, Adamawa, Bauchi, Borno, Gombe and Yobe) the main factor of displacement is the insurgency. In Nasarawa, Plateau, Kaduna and Taraba most of the IDPs identified were displaced by communal clashes.



Graph 3: Total IDP Population by current location (State) and reason for displacement;

1D: YEARS OF DISPLACEMENT

The majority of IDPs identified during this round assessment were displaced in 2014 (62,7%). The percentage of IDPs displaced in 2015 is of 31,9 %.



Graph 4: IDP population by year of displacement

¹ DTM report, August 2015

² Idem

1E: ORIGIN OF THE DISPLACED POPULATION

As for the origin of the displaced population, 80,3% of the IDPs identified during this round of assessment comes from Borno where attacks by Boko Haram continue to be carried-out.

		CURRENT LOCATION										
		ABUJA	ADAMAWA	BAUCHI	BORNO	GOMBE	KADUNA	NASARAWA	PLATEAU	TARABA	YOBE	
STATE OF ORIGIN	ABUJA											
	ADAMAWA	1.44%	75.30%	1.03%	0.02%	2.96%	0.10%			7.76%		
	BAUCHI			16.69%			0.12%		0.38%			
	BENUE	9.91%				0.13%			0.29%			
	BORNO	84.25%	22.22%	31.64%	99.71%	75.73%	8.21%	7.48%	2.23%	13.40%	62.10%	
	GOMBE					0.42%						
	KADUNA			0.16%			89.02%	6.21%	0.03%			
	KATSINA			0.16%								
	NASARAWA	2.27%		1.99%			1.26%	73.91%	2.76%			
	PLATEAU			29.97%			1.19%	7.69%	89.54%			
	TARABA	2.13%	2.48%	7.08%		0.29%		4.71%	4.04%	78.55%		
	YOBE			11.29%	0.27%	20.47%			0.73%	0.29%	37.90%	
	ZAMFARA						0.10%					

Table 2: IDP Population by state of origin and current location (State);

In all the states that are mainly affected by communal clashes (Kaduna, Nasarawa, Plateau and Taraba), the majority of IDPs are from the same states. This is also the case in Adamawa where 70,1% of the IDPs identified are from Adamawa.

In Abuja, Bauchi, Borno, Gombe and Yobe, most IDPs are from Borno.

1F: TYPE OF LOCATION - RESIDENCE OF IDPS

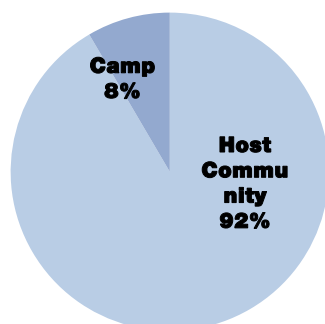
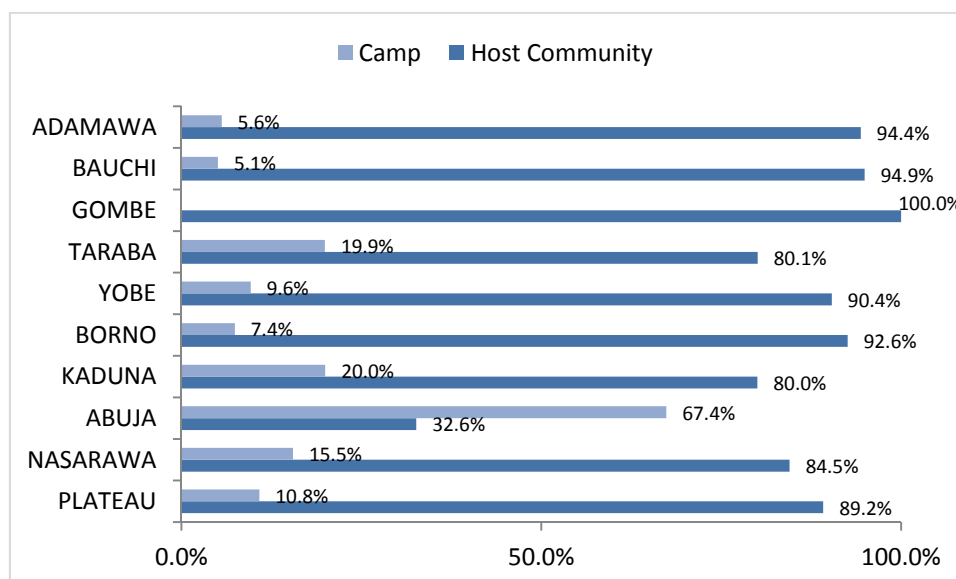


Chart 2: IDP population by type of location

The vast majority of IDPs identified during the assessments (91,5%) are living in host communities while 8,5% live in camps or camp-like sites. The IDPs living in host communities include the ones living with relatives and friends or renting a house.

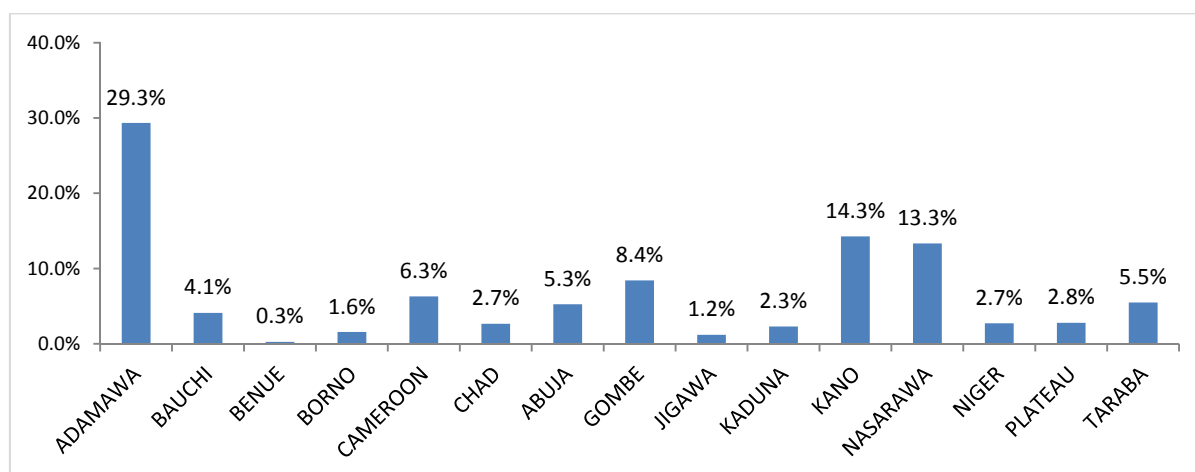
According to the data collected on the field, the percentage of IDPs living in camps in Adamawa and Borno tend to decrease (respectively 5,6% and 7,4% in October compared to 8% and 9% in August).



Graph 6: IDP population by type of location-State

1G: RETURNEES

According to the results of the return assessments, an estimated total of 320,365 IDPs returned to northern Adamawa (Mubi North, Mubi South, Michika, Maiha, Hong and Gombi). Most returnees were originally displaced in Adamawa (29.3%), Kano (14.3%), Nasarawa (13.3%), Gombe (8.4%), while 6.3% of returnees came from Cameroon.



Graph 7: Returnees-originally displaced location

2 REGISTRATION

The registration exercise that is being carried-out by the DTM teams consist in collecting detailed information on household members as well as data on displacement history, livelihood, return intention, assistance received and needs. For this round of assessment, a total of 2,723 households (16,042 individuals) were registered in host communities in Adamawa and Borno³.

³ Registration lists available upon request

2A: NEEDS AND ASSISTANCE

According to the data collected during the registration exercise, 63% of the IDP households declared that food was their primary need while 10% put shelter as their first need and 6% NFIs. As for the host families, 83% of them declared that food was their primary need followed by NFI (7%).

As for the assistance received, 63% of the registered households declared that they have received food while only 18% declared that they have received NFIs and 3% shelter.

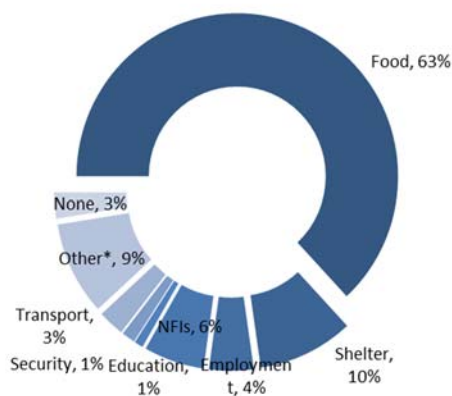


Chart 3: IDP needs

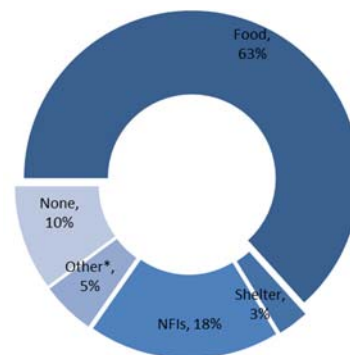
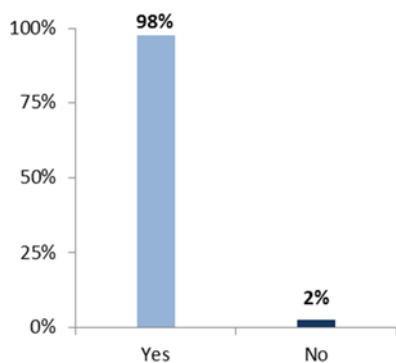


Chart 4: IDP received assistance

2C: INTENTIONS OF RETURN



Graph 8: IDP-intention of return

The registration data show that 98% of the registered IDPs expressed the desire to return to their places of origin. For 77% of them, security is the main condition to return while 17% put the improvement of the economic situation in their area of origin as the main factor for their return and 6% would like to see improvement in term of food security before they go back home.

The complexity of IDP movements in this context is underlined by the fact that 56% of the IDPs households declared travelling regularly to their places of origin. 52% of them go to their home to check on their belonging while 44% go to visit their family.

As for their source of income, 62% of the IDP households declared that they had a source of income before their displacement, this percentage is only of 11% after displacement.

3 SITES ASSESSMENT

3.1. A: LOCATION AND NUMBER OF IDPS IN 76 SITES

The number of IDP sites assessed by the DTM teams went from 59 to 76. These sites include the camps and camp-like sites identified in the 10 states where the assessments took place and include both formal and informal settlements.

The number of individuals residing in the sites is 198,011 individuals (28,983 household) which represents 8% of the IDP population

State	Formal camps	Unformal camps	Total
Adamawa	5	4	9
Bauchi		1	1
Borno	15	9	24
Abuja		5	5
Kaduna		5	5
Nasarawa		6	6
Plateau		7	7
Taraba		13	13
Yobe	3	3	6
Total	23	53	76

Table 3: Number of sites/state

The sites assessed during this exercise have been classified in three categories:

- **Camp:** open-air settlements, usually made-up of tents, where IDPs find accommodation;
- **Collective center:** pre-existing buildings and structures used for collective and communal settlements of the displaced population;
- **Transitional center:** centers which provide short term/temporary accommodation for the displaced population.

Out of 76 sites, 55 categorized as collective settlements (mainly schools), while 19 sites are considered to be camps and 2 sites were classified as transitional center.

3.1. B: SECTOR ANALYSIS



SHELTER

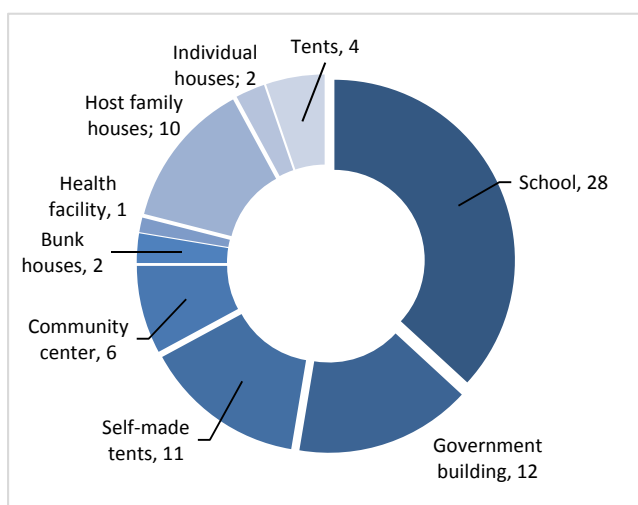


Chart 5: Type of Shelter

The most common types of shelter identified during the site assessments are schools (28 sites) and Government building (12 sites). The other types of shelter include self-made tent (11 sites) and community centers (6 sites).

In the majority of sites (42), more than 75% of the IDP population live indoors while in 5 sites, more than 75% of the population live in makeshift shelters.

In 34 sites, IDPs do not have access to electricity while in 32 sites less than 25% of the IDP population have access to safe cooking facilities. In 22 sites no cooking facilities are available. The majority of the sites (40) do not have private living areas.

In most sites (31), sites residents reported blankets as the most needed type of NFI while in 18 sites mosquito nets are the second most needed type of NFI.

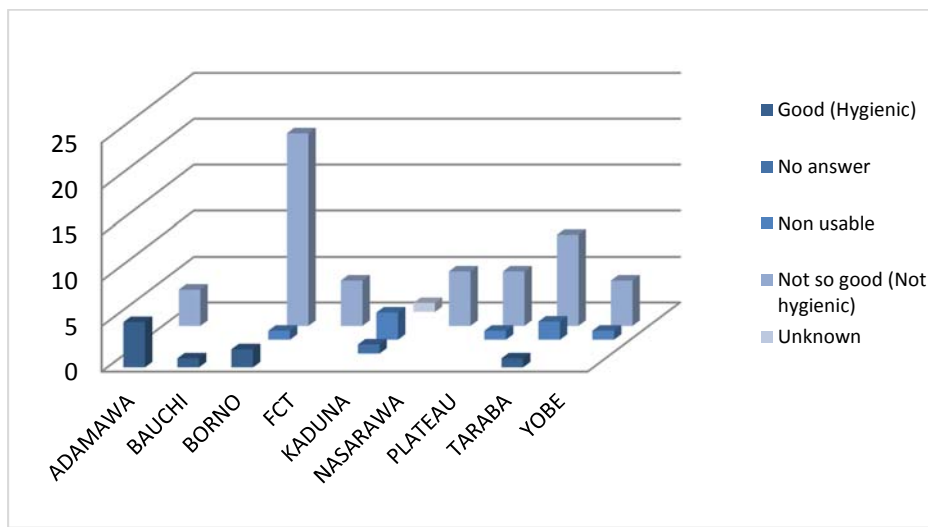


WASH

In the majority of sites (52) the main water source is located on-site within a 10 minute walk, in 5 sites the main water source is located on site, but requires more than a 10 minute walk. In 7 sites, the main water source is located off-site within a 10 minute walk, in 11 sites the water source is located off site and require more than 10 minute walk. In 34 sites, more than 50% of water sources are functional, while in 29 sites less than 50% of water sources are functional.

In 57 sites, the toilets are reported to be in no so good conditions while in 9 sites they are reported to be in good conditions. In 8 sites, toilets are not usable. In most sites (46) there are no separate toilets for male and female.

Most sites (39) do not have a waste disposal system. In addition, 65 sites do not have a good drainage system and 48 sites show signs of open defecation.

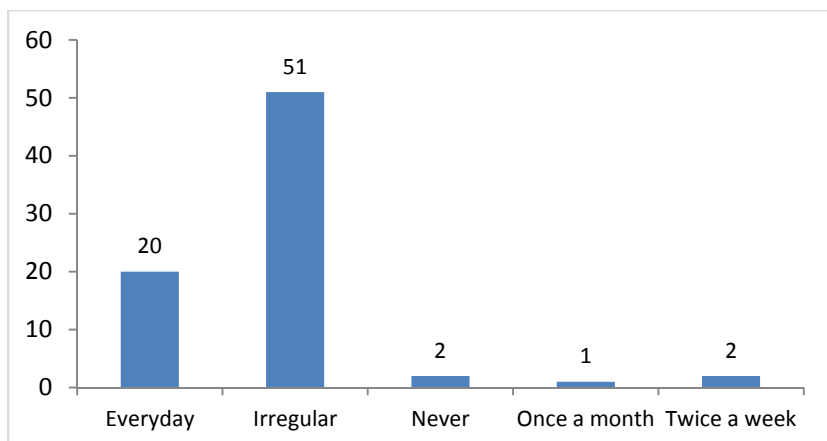


Graph 9: Conditions of most toilets in sites.



FOOD AND NUTRITION

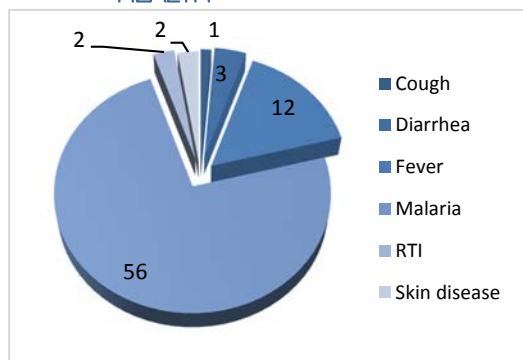
Households in 68 sites have access to food on site (distribution, vouchers) but the provision of food is irregular in 51 sites. In 53 sites, residents have access to a market near from the site. The most common source of food is distribution (32 sites), followed by host community donation (23 sites). In 49 sites there is no screening for malnutrition and in the vast majority of sites no supplementary feeding are available.



Graph 10: Regularity of food distribution in sites



HEALTH



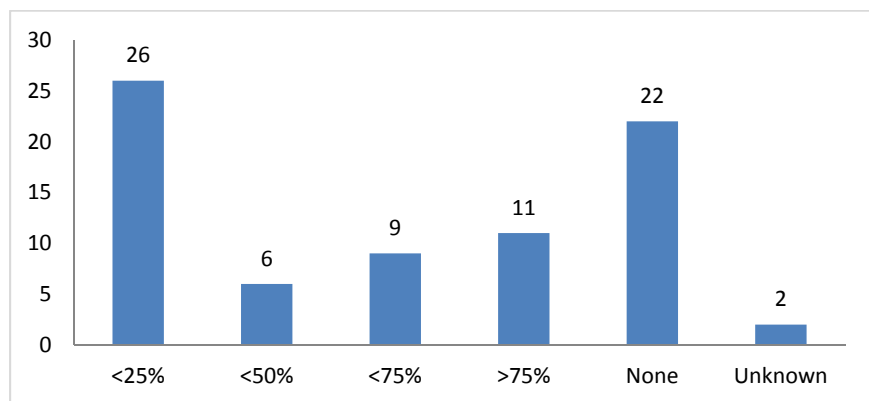
In the majority of sites (56), residents reported malaria as the most prevalent health problem, followed by fever (12 sites). In 45 sites, IDPs reported not to have access to medicine but residents in 50 sites reported to have access to health facilities.

Chart 6: Most prevalent health problems in sites



EDUCATION

In 36 sites, children do not have access to formal or informal education while in 40 sites children have access to education. In 32 sites the education facility is located on site while in 32 sites the education facilities are situated offsite. In 26 sites, less than 25% of the IDP population attend school while in 22 sites none of children attend school. In 11 sites, more than 75% of the children attend school. In 9 sites, less than 75% of children attend school.



Graph 11: Percentage of children having access to formal/informal education in sites



PROTECTION

Almost all sites (49) have security available on site. In 27 camps, the security is provided by the military and in 16 sites by the camp residents. In 12 sites, residents reported frictions among site residents while in 9 sites residents reported frictions with host community. In 4 sites, residents reported cases of domestic violence while in 4 sites IDPs reported cases of exchange for goods/food for sex. In addition, in 8 sites cases of forced family separation were reported. In 8 sites, child physical and emotional abuses were reported while in 6 sites cases of children involved in forced labor/begging were identified. Cases of separated children were reported in 5 sites.

As for the assistance received, in 8 sites residents declared that the assistance was physically inadequate for the most vulnerable while residents in 4 sites reported fighting between recipients at distribution points.

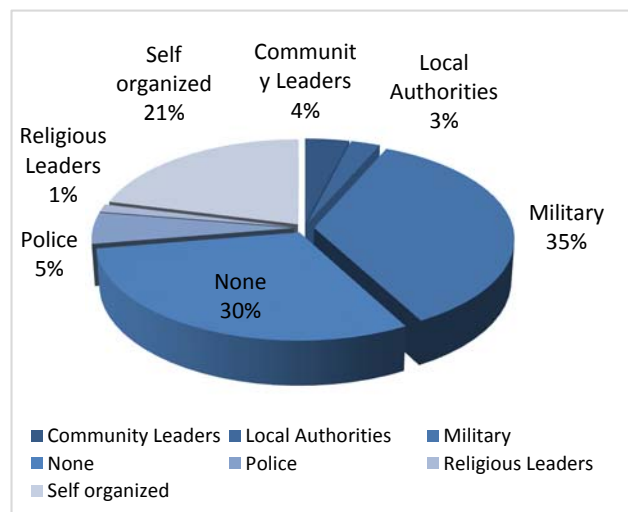
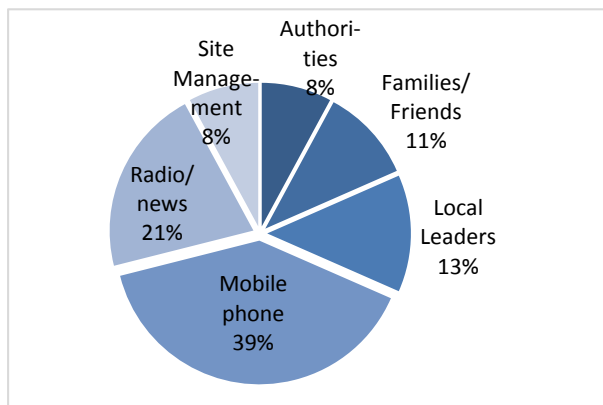


Chart 7: Security providers in sites



COMMUNICATION



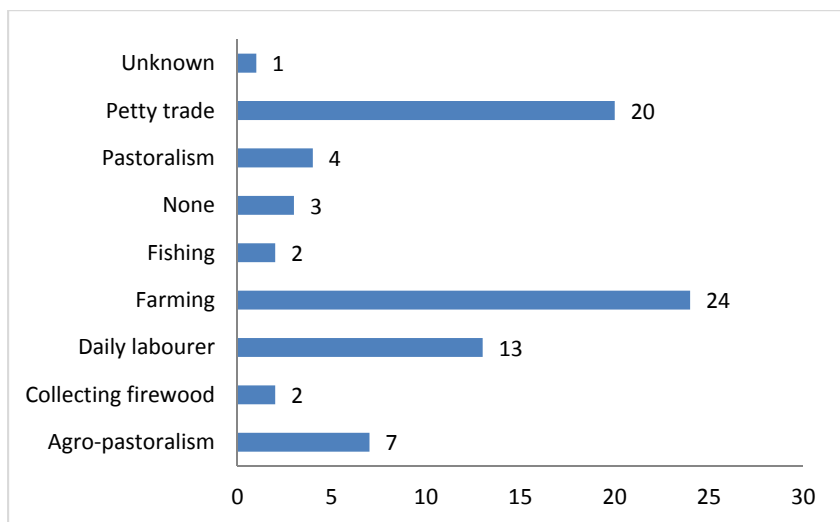
In most of sites (30), residents get information through mobile phone while in 16 sites residents reported getting information from the radio and in 10 sites from community leaders. At 25 sites residents require more information about safety and security while residents in 18 sites reported requiring more information about the situation in areas of their origin.

Chart 8: Means of information in sites



LIVELIHOOD

In most sites (24) farming is the main occupation of the IDPs, followed by petty cash (20 sites). In the majority of sites (37) residents do not have access to income generating activities or land to cultivate (44 sites).



Graph 12: IDP occupation in sites

4 METHODOLOGY

The DTM activities are being implemented according to the methodology endorsed by the Government of Nigeria and carried out by teams composed of members of the National Emergency Management Agency (NEMA), the State Emergency Management Agency (SEMA), the Nigerian Red Cross Society and IOM. Humanitarian partners on the field are also participating in the assessment on an ad hoc basis. Data are collected following the below steps:

Local Government area (LGA) level location assessment:

An assessment is conducted with key informants at the LGA level. The type of information collected at this level includes: displaced population estimates including household and individual level estimates, the identification of wards within the LGA with displaced populations and the type of displacement locations, reason for displacement, time of arrival of IDPs, and location of origin. The assessment also captures if IDPs have originated from the LGA and records contacts of key informants and organizations assisting IDPs in the area. The information is collected via interviews with key informants, who can be representatives of the LGA administration, IDP community leaders, religious leaders, Ward leaders, and NGO or humanitarian aid workers. The results of the LGA assessments, most importantly the indication of the presence of displaced households in specified wards/villages, disaggregated by those displaced in host communities and those displaced in camp-like settings, are utilized to advise whether to continue assessments at the ward/village level.

Ward/village level location assessments:

Assessments are conducted with key informants at the ward/village level. The information collected includes: estimates on the number of displaced households and individuals living in the ward, details on the location and type of residence of displaced households (host community – free or renting, camp-like settings – formal and informal), reason for displacement, areas of origin, and length of displacement. The assessment also includes information on displacement originating from the ward, as well as a demographic calculator based on a sample of IDPs in host communities and camp-like settings. Interviews are conducted with key informants, such as Ward leaders, representatives of the LGA administration, IDP community leaders, religious leaders, and NGO or humanitarian aid workers. The results of the ward/village assessments are used to verify the information collected at LGA level. The ward/village level location assessments are carried out in all those wards identified as having IDP populations during the LGA assessment.

Site assessments

The site assessments are undertaken in identified IDP sites (both camps and camp-like settings) as well as in host communities to capture detailed information on the key services available. Site assessment forms are utilized to record the exact location and name of a site/location, accessibility constraints, size and type of the site/location, whether registrations is available, details about the site management agency (in camps and camp-like sites) and if natural hazards put the site/location at risk. The form also captures details about the IDP population, including their place of origin, and demographic information on the number of households with a breakdown by age and sex, as well as information on IDPs with specific vulnerabilities. The form furthermore captures details on key access to services in different sectors: shelter and NFI, WASH, food, nutrition, health, education, livelihood, communication, and protection. The information is captured through interviews with representatives of the site management agency and other key informants, including IDP representatives.

Registration:

The registration exercise consists in establishing the profile of IDPs by collecting detailed information at household level. The data is captured through an individual interview with the head of household and include information on individual household members, displacement history, education, livelihood, return intention, assistance received and needs as well as on vulnerability. This exercise is conducted in camps, camp like sites and host communities.

Contacts:

NEMA: Alhassan Nuhu, Director, Disaster Risk Reduction, alhassannuhu@yahoo.com +234 8035925885

IOM: Stéphanie Daviot, Project Officer, sdaviot@iom.int +234 9038852524

<http://nigeria.iom.int/dtm>