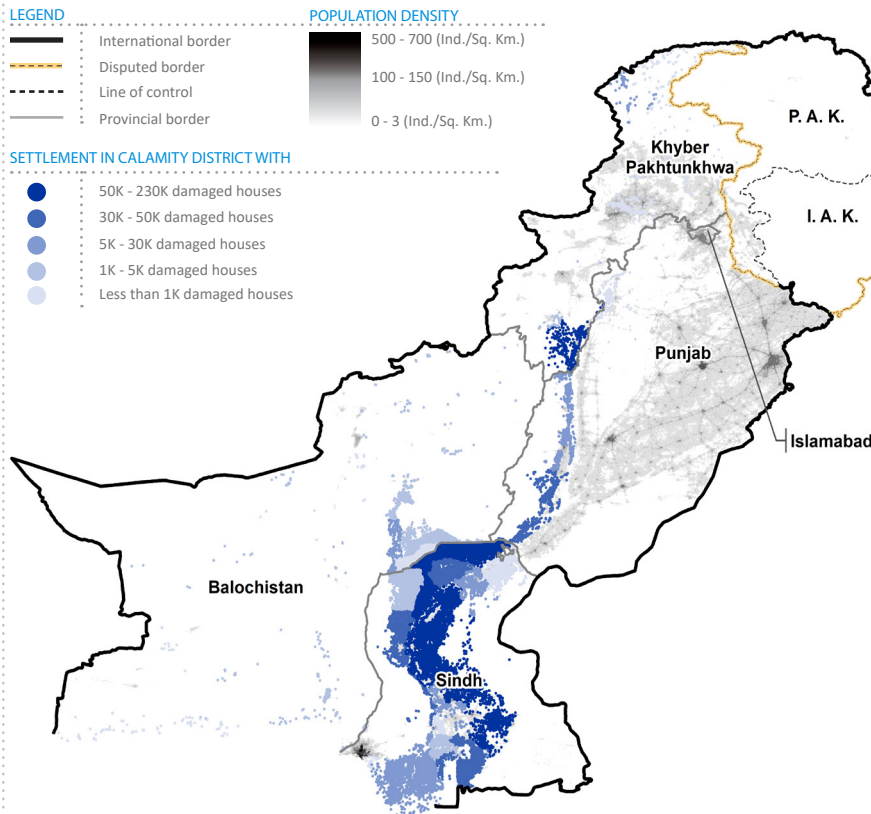


ESTIMATED DAMAGE TO HOUSES IN FLOOD AFFECTED DISTRICTS

AND EXISTING POPULATION DENSITY IN PAKISTAN

As of 17 September 2022



OVERVIEW

Severe monsoon weather since mid-June 2022 has affected up to 33 million people in the country. As of 6 September 2022, 81 districts have been officially declared as "calamity hit" and 40 districts declared as "flood-affected". Among 81 districts declared calamity, 32 districts are located in Balochistan Province, 23 districts are located in Sindh Province, 17 districts are located in Khyber Pakhtunkhwa Province, 6 districts are located in Gilgit Baltistan Province, and 3 districts are located in Punjab Province.

The cumulative impact of the floods from 14 June to 6 September shows a record of 1,343 fatalities and 12,720 injured. A total of 6,579 km of roads, 246 bridges and almost 1.7 million houses have been damaged. Additionally, 177,265 people have been rescued and 633,997 people are living in relief camps while many more are temporarily displaced and being hosted by other households.

At present, the total number of people temporarily displaced due to the floods is still unknown. However, the map on the left depicts the overlay of estimated damage to houses in settlements affected by flood and existing population density that includes in those affected areas.

Information in this dashboard is based on secondary data sources that are publicly available such as reports from the National Disaster Management Authority (NDMA) of Pakistan, census data from the Pakistan Bureau of Statistics, settlement data from the National Geospatial Intelligence Agency, flood water data from UNOSAT and data on damage to houses from OCHA's Flood Response Plan.

Disclaimer:
Dotted line represents approximately the line of control in Jammu and Kashmir agreed upon by India and Pakistan. The final status of Jammu and Kashmir has not yet been agreed upon by the parties. The designations employed and the presentation of material on this map do not imply the expression of any opinion whatsoever on the part of IOM or United Nations concerning the legal status of any country, territory, city or area or of its authorities, or concerning the delimitation of its frontiers or boundaries.

Note:
Settlement in this snapshot is imply to major feature of populated place into which similar feature designations are grouped. Settlement does not represent administrative boundary such as village, mouza or broader area.

SUMMARY OF DAMAGE TO HOUSES IN SETTLEMENTS ACROSS PROVINCES

As the data of flood water extent over Pakistan (issued by UNOSAT) does not cover Gilgit Baltistan (GB) and Azad Jammu & Kashmir (AJK), therefore the summary for mentioned Provinces are not available in this snapshot

Balochistan

Total population*	12.3 M
No. of districts	35
No. of districts declared calamity	32
Estimated number of settlement in the province*	22,227
Estimated damage to houses across number calamity-hit districts	
50K - 230K damaged houses across	0 district
30K - 50K damaged houses across	0 district
5K - 30K damaged houses across	2 districts
1K - 5K damaged houses across	18 districts
less than 1K damaged houses across	12 districts

Punjab

Total population*	109.9 M
No. of districts	36
No. of districts declared calamity	3
Estimated number of settlement in the province*	71,699
Estimated damage to houses across number calamity-hit districts	
50K - 230K damaged houses across	0 district
30K - 50K damaged houses across	1 district
5K - 30K damaged houses across	1 district
1K - 5K damaged houses across	0 district
less than 1K damaged houses across	1 district

Khyber Pakhtunkhwa

Total population*	30.5 M
No. of districts	35
No. of districts declared calamity	17
Estimated number of settlement in the province*	36,089
Estimated damage to houses across number calamity-hit districts	
50K - 230K damaged houses across	1 district
30K - 50K damaged houses across	0 district
5K - 30K damaged houses across	1 districts
1K - 5K damaged houses across	2 districts
less than 1K damaged houses across	13 districts

Sindh

Total population*	47.8 M
No. of districts	29
No. of districts declared calamity	23
Estimated number of settlement in the province*	37,290
Estimated damage to houses across number calamity-hit districts	
50K - 230K damaged houses across	9 districts
30K - 50K damaged houses across	4 districts
5K - 30K damaged houses across	5 districts
1K - 5K damaged houses across	2 districts
less than 1K damaged houses across	3 districts

Data Sources:

- Various numbers presented on overview are cited from "NDMA Monsoon 2022 Daily Situation Report no 095" released on Sept. 16.
 - *Total population represent population at Provincial level, based on Pakistan Bureau of Statistic census in 2017.
 - *Settlement data (updated in 2018) issued by National Geospatial-Intelligence Agency, downloaded from <https://data.humdata.org/>

- Districts with calamity, damaged & destroyed houses digitalised from OCHA's monsoon floods report released on Sept. 5.
 - Floodwater extents over Pakistan between 1 and 29 Aug (issued by UNOSAT), downloaded from <https://data.humdata.org/>

DTM activities in Pakistan are funded by:



For more information, please visit: <https://displacementiom.int/pakistan>

For further information, please contact: DTMPakistan@iom.int