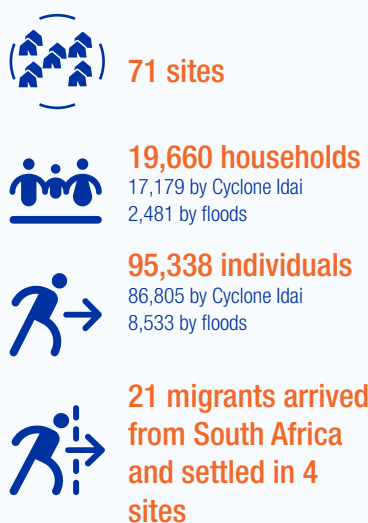
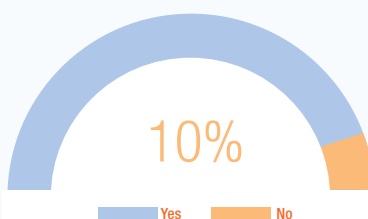


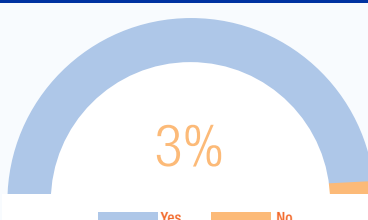
Key DTM figures in the sites



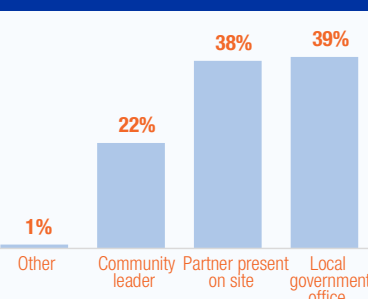
No actions taken on COVID-19 prevention and control in 10% (down from 38%) of the sites



No information of the COVID-19 precaution measures in 3% (down from 10%) of the sites



Source of information on COVID-19 in the 96% (up from 90%) of sites where people have been informed

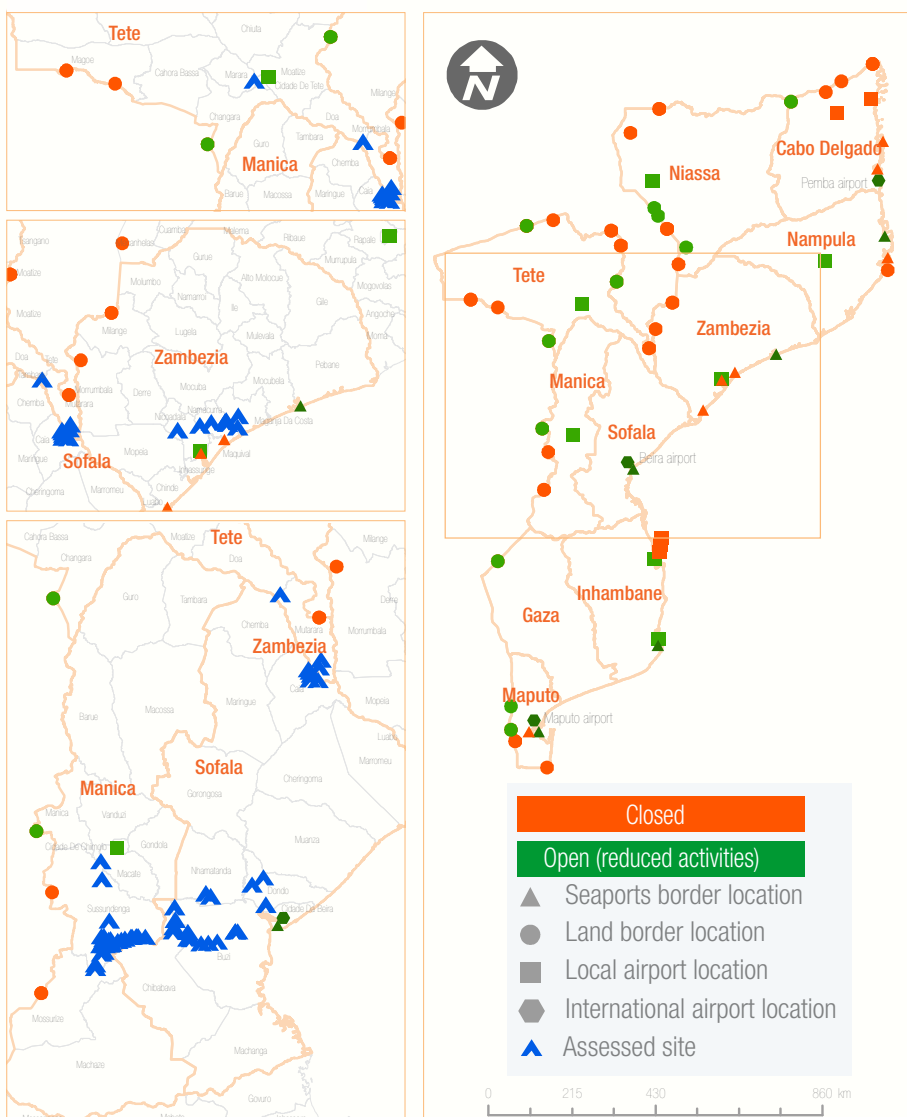


The current outbreak of COVID-19 has resulted in a global pandemic, heightening the risk to vulnerable populations, internally displaced people and people on the move. On 22 March 2020, the Government of Mozambique officially declared the first positive COVID-19 case. Concern about the potential spread of COVID-19 in Mozambique was elevated in late March, when [according](#) to Mozambique's National Migration Service (SENAMI) over 14,000 Mozambican migrants returned from South Africa over the Ressano Garcia border within a span of a few days, as South Africa declared lock-down due to COVID-19, further heightening the risk to vulnerable population especially the internally displaced population.

In response to this pandemic, IOM's Displacement Tracking Matrix (DTM) in collaboration with the Government of Mozambique's National Disaster Management Agency (INGC) conducted an assessment in the resettlement sites from 05 to 08 May 2020, with the sole purpose to inform the government and humanitarian partners on the preparedness and precautionary measures that are available in resettlement sites hosting displaced populations since Idai cyclone. The information gathered will help decision-makers to plan interventions and restrictions as well as recommend health and site preparations measures for outbreak prevention and containment in the resettlement sites in the central region.

In the 71 resettlement sites assessed, three sites (Bandua 2019 and Maximedje sites in Buzi district of Sofala province and Chibue and Muawa sites in Sussudenga district of Manica province) reported that in the past month, 21 migrant workers from South Africa settled in the sites. Of these four sites, two sites reported that the returnees had been screened for COVID19 symptoms prior to settling in the site.

PoEs Status and Resettlement Sites in the Central Region of Mozambique



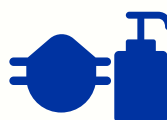
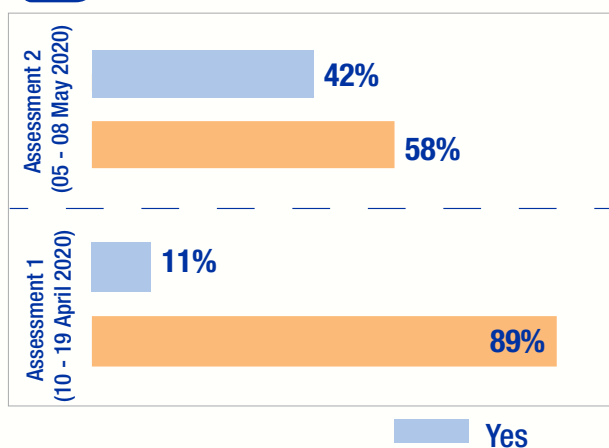
Preparedness

The support of good monitoring and coordination mechanisms on sites are crucial for case management, information and preparedness and response activities, in particular in light of the Covid19 outbreak. As of the date of the assessment and while there is a presence of site management mobile teams and referral pathways, there are some sites reported not having permanent site management agencies on site.

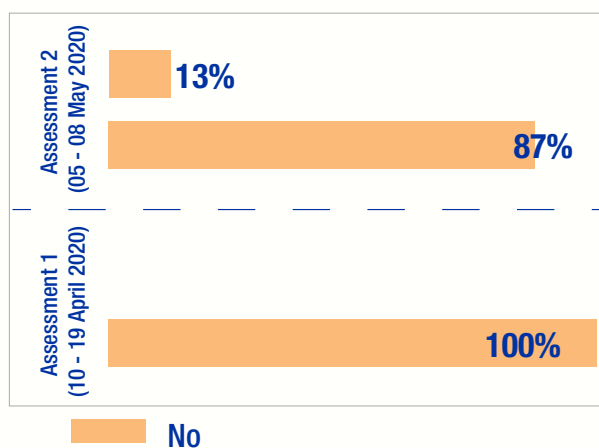
When asked if basic COVID-19 Personal Protective Equipment (masks, gloves, etc.) available on site, none of the site reported having any kind of personal protective supplies.



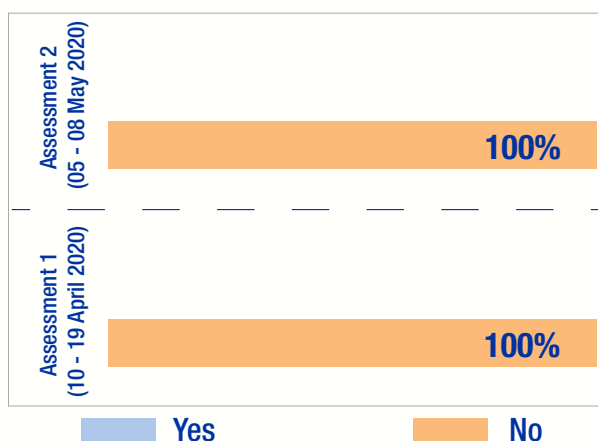
In the past month, any new hand-washing station with soap and water was built?



Any of the COVID-19 protective equipment available in the site (masks, gloves, etc.)?



Is there isolation space available in the site?



The depiction and use of boundaries, geographic names, and related data shown on maps and included in this report are not warranted to be error free nor do they imply judgment on the legal status of any territory, or any endorsement or acceptance of such boundaries by IOM.



Annex 3: Preparedness Matrix for Resettlement Sites in Tete and Zambezia Provinces

Province	District	Site name	Were there any actions for COVID-19 prevention and control taken in the site?	Were people living in the site informed of the COVID19 precaution measures?	Were there any awareness sessions held in the site to inform people of the COVID10 precaution measures?	In the past month, any new hand washing station with soap and water was built?	Any of the COVID19 protective equipment available in the site (masks, gloves, etc.)?	Is there temperature measuring device available in the site or in the clinic?	Is there isolation space available in the site?	Total households	Total individuals
Tete	Cidade De Tete	Matundo - unidade Chimbonde	Yes	Yes	Yes	No	No	No	No	565	2,846
	Mutarara	Nkganzo	No	Yes	Yes	No	No	No	No	63	327
		Panducani	Yes	Yes	Yes	Yes	No	No	No	80	408
Total										22,392	112,391
Zambezia	Maganja Da Costa	Landinho	Yes	Yes	Yes	No	No	No	No	300	1,500
		Mussaia	Yes	Yes	Yes	Yes	No	No	No	668	3,300
		Parreirão	Yes	Yes	Yes	No	No	No	No	920	3,860
	Namacurra	Brigodo	Yes	Yes	Yes	No	No	No	No	481	1,575
		Gogodane	Yes	Yes	Yes	No	No	No	No	42	240
		Mucoa	Yes	Yes	Yes	No	No	No	No	125	426
		Munguissa	Yes	Yes	Yes	Yes	No	No	No	211	866
		Ronda	No	Yes	Yes	No	No	No	No	260	642
	Nicoadala	Digudiua	Yes	Yes	Yes	No	No	No	No	193	778
Namitangurini		Yes	Yes	Yes	No	No	No	No	218	1,565	
Total									3,418	14,752	
Grand Total										19,660	95,338

[Go back](#)